

Developers and Manufacturers of Hydraulic Flanges & Components

## BUTT WELD IN-LINE FLANGES

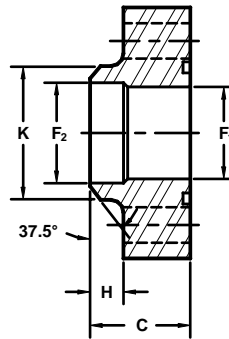
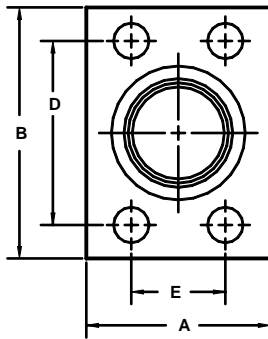
For Schedule 40 Pipe

### ISO 6162-1 PATTERN / J518 61 SERIES METRIC

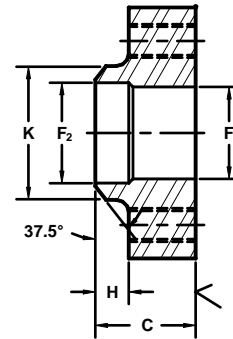
FLANGE SIZE	PIPE SIZE	PART NUMBER	A	B	C	D	E	F <sub>1</sub>	F <sub>2</sub>	H	K	MOUNTING KIT <sup>①</sup>		
												PART NO.	BOLT SIZE	O-RING
13	1/2	1/2	38.0	54.0	31.5	38.10 (1.500)	17.48 (.688)	13.5	15.7	9.7	22.4	MKM 512	M8 x 35	210
												-----	-----	---
19	3/4	3/4	44.5	66.5	31.5	47.63 (1.875)	22.23 (.875)	19.0	20.8	9.7	28.4	MKM 1525	M10 x 35	214
												-----	-----	---
25	1	1	51.0	71.5	31.5	52.37 (2.062)	26.19 (1.031)	23.8	26.4	9.7	35.1	MKM 1542	M10 x 35	219
												-----	-----	---
32	1 1/4	1 1/4	63.5	81.0	31.5	58.72 (2.312)	30.18 (1.188)	31.5	35.0	9.7	44.5	MKM 4520	M10 x 35	222
												-----	-----	---
38	1 1/2	1 1/2	70.0	95.5	38.0	69.85 (2.750)	35.71 (1.406)	38.0	40.9	12.7	50.8	MKM 4551	M12 x 40	225
												-----	-----	---
51	2	2	82.5	101.5	38.0	77.77 (3.062)	42.88 (1.688)	49.2	52.3	12.7	63.5	MKM 4552	M12 x 45	228
												-----	-----	---
64 <sup>②</sup>	2 1/2	2 1/2	101.5	114.0	44.0	88.90 (3.500)	50.80 (2.000)	59.0	62.7	12.7	76.2	MKM 2575	M12 x 50	232
												-----	-----	---
76 <sup>③</sup>	3	3	114.0	135.0	50.5	106.38 (4.188)	61.93 (2.438)	73.6	77.7	12.7	88.9	MKM 585	M16 x 60	237
												-----	-----	---
89 <sup>④</sup>	3 1/2	3 1/2	127.0	152.5	38.0	120.65 (4.750)	69.85 (2.750)	85.3	90.0	12.7	101.5	MKM 1571	M16 x 50	241
												-----	-----	---
102 <sup>④</sup>	4	4	139.5	162.0	38.0	130.18 (5.125)	77.77 (3.062)	97.3	102.1	12.7	114.3	MKM 1572	M16 x 50	245
												-----	-----	---
127 <sup>④</sup>	5	5	177.5	184.0	50.5	152.40 (6.000)	92.08 (3.625)	125.5	128.0	12.7	142.7	MKM 1573	M16 x 60	253
												-----	-----	---

O-Ring Style

Companion Style  
(Flat Face)



Model 1105 / 1107



Model 1106 / 1108

### ISO 6162-2 PATTERN / J518 62 SERIES METRIC

FLANGE SIZE	PIPE SIZE	PART NUMBER	A	B	C	D	E	F <sub>1</sub>	F <sub>2</sub>	H	K	MOUNTING KIT <sup>①</sup>		
												PART NO.	BOLT SIZE	O-RING
13	1/2	1/2	44.5	56.5	31.5	40.49 (1.594)	18.24 (.718)	13.5	15.7	9.7	22.4	MKM 512	M8 x 35	210
												-----	-----	---
19	3/4	3/4	51.0	71.5	31.5	50.80 (2.000)	23.80 (.937)	19.0	20.8	9.7	28.4	MKM 1525	M10 x 35	214
												-----	-----	---
25	1	1	57.0	81.0	31.5	57.15 (2.250)	27.76 (1.093)	23.8	26.4	9.7	35.1	MKM 4569	M12 x 40	219
												-----	-----	---
32	1 1/4	1 1/4	70.0	95.5	31.5	66.68 (2.625)	31.75 (1.250)	31.5	35.0	9.7	44.5	MKM 1527	M12 x 40	222
												-----	-----	---
38	1 1/2	1 1/2	82.5	114.5	38.0	79.38 (3.125)	36.50 (1.437)	38.0	40.9	12.7	50.8	MKM 562	M16 x 45	225
												-----	-----	---
51	2	2	101.5	133.5	44.0	96.82 (3.812)	44.45 (1.750)	49.2	52.3	12.7	63.5	MKM 1548	M20 x 60	228
												-----	-----	---
64 <sup>⑤</sup>	2 1/2	2 1/2	127.0	175.0	50.5	123.82 (4.875)	58.72 (2.312)	59.0	62.7	12.7	76.2	MKM 1575	M24 x 70	232
												-----	-----	---
76 <sup>⑤</sup>	3	3	152.5	216.0	63.0	152.40 (6.000)	71.42 (2.812)	73.6	77.7	12.7	88.9	MKM 1576	M30 x 100	237
												-----	-----	---

① Order Separately    ② 16 MPa Max    ③ 10 MPa Max    ④ 2.5 MPa Max    ⑤ Not included in ISO 6162 / J518 specifications  
 \*Also available for M12 bolts.    \*\*Also available for M14 bolts.

MATERIAL : STEEL  
1/07

NOTE: DIMENSIONS ARE IN MILLIMETERS. INCH EQUIVALENTS IN ( ).