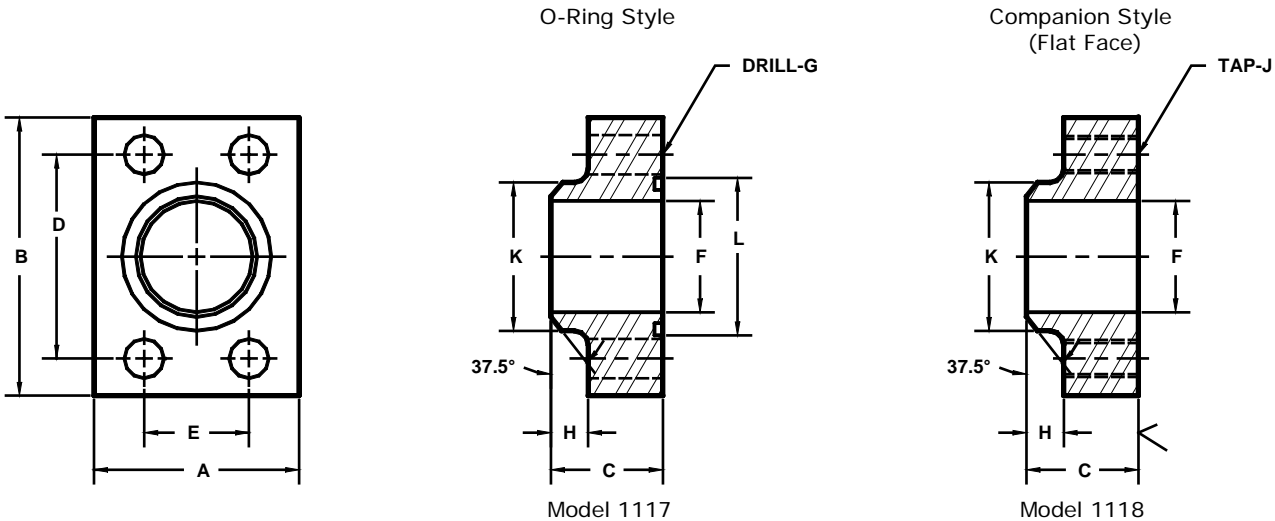


Developers and Manufacturers of  
Hydraulic Flanges & Components

## SCHEDULE 160 BUTT WELD IN-LINE PIPE FLANGES

SAE BOLT PATTERN

61 SERIES



FLANGE SIZE	PIPE SIZE	PART NUMBER	A	B	C	D	E	F	G	H	J	K	L	MOUNTING KIT <sup>①</sup>		
														PART NO.	BOLT SIZE	O-RING
1/2	1/2	1117-08-08	1.50	2.12	1.25	1.500	.688	.47	.34	.38	5/16-18	.88	1.000	MK 512	5/16-18 X 1 1/2	210
		1118-08-08							---				---	---		
1/2	3/4	1117-08-12	1.75	2.12	1.75	1.500	.688	.53	.38	.38	5/16-18	1.12	---	---	---	---
		1118-08-12							---				---	---		
3/4	1/2	1117-12-08	1.75	2.62	1.25	1.875	.875	.47	.41	.38	3/8-16	.88	1.250	MK 1525	3/8-16 X 1 1/2	214
		1118-12-08							---				---	---		
3/4	3/4	1117-12-12	1.75	2.62	1.25	1.875	.875	.61	.41	.38	3/8-16	1.12	1.250	MK 1525	3/8-16 X 1 1/2	214
		1118-12-12							---				---	---		
3/4	1	1117-12-16	2.00	2.62	2.00	1.875	.875	.75	.38	.38	3/8-16	1.38	---	---	---	---
		1118-12-16							---				---	---		
1	3/4	1117-16-12	2.00	2.82	1.25	2.062	1.031	.61	.41	.38	3/8-16	1.12	1.562	MK 1542	3/8-16 X 1 1/2	219
		1118-16-12							---				---	---		
1	1	1117-16-16	2.00	2.82	1.25	2.062	1.031	.81	.41	.38	3/8-16	1.38	1.562	MK 1542	3/8-16 X 1 1/2	219
		1118-16-16							---				---	---		
1	1 1/4	1117-16-20	2.50	2.82	2.00	2.062	1.031	1.00	.38	.38	3/8-16	1.75	---	---	---	---
		1118-16-20							---				---	---		
1 1/4	1	1117-20-16	2.50	3.19	1.25	2.312	1.188	.81	.47	.38	7/16-14	1.38	1.750	MK 1527	7/16-14 X 1 1/2	222
		1118-20-16							---				---	---		
1 1/4	1 1/4	1117-20-20	2.50	3.19	1.25	2.312	1.188	1.16	.47	.38	7/16-14	1.75	1.750	MK 1527	7/16-14 X 1 1/2	222
		1118-20-20							---				---	---		
1 1/4	1 1/2	1117-20-24	2.50	3.19	1.50	2.312	1.188	1.25	.50	.50	7/16-14	2.00	---	---	---	---
		1118-20-24							---				---	---		
1 1/2	1 1/4	1117-24-20	2.75	3.75	1.50	2.750	1.406	1.16	.53	.50	1/2-13	1.75	2.125	MK 1547	1/2-13 X 1 3/4	225
		1118-24-20							---				---	---		
1 1/2	1 1/2	1117-24-24	2.75	3.75	1.50	2.750	1.406	1.34	.53	.50	1/2-13	2.00	2.125	MK 1547	1/2-13 X 1 3/4	225
		1118-24-24							---				---	---		
1 1/2	2	1117-24-32	3.50	3.75	2.25	2.750	1.406	1.50	.50	.50	1/2-13	2.50	---	---	---	---
		1118-24-32							---				---	---		

① Order Separately

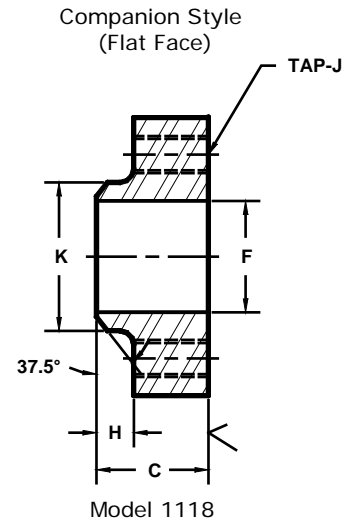
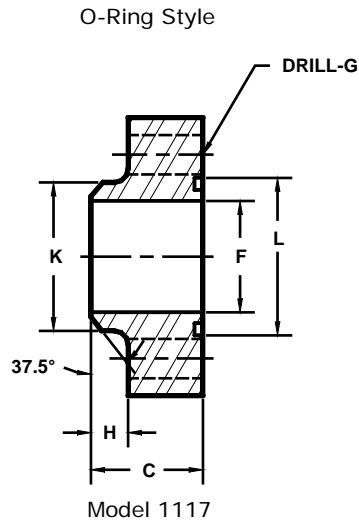
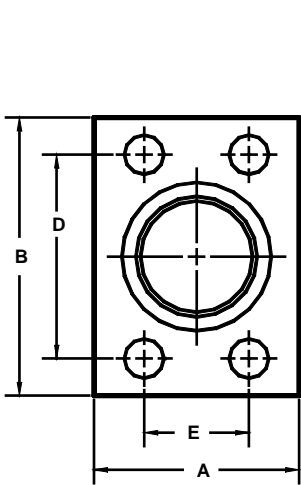
MATERIAL : STEEL  
1/07

Developers and Manufacturers of  
Hydraulic Flanges & Components

## SCHEDULE 160 BUTT WELD IN-LINE PIPE FLANGES

SAE BOLT PATTERN

61 SERIES



FLANGE SIZE	PIPE SIZE	PART NUMBER	A	B	C	D	E	F	G	H	J	K	L	MOUNTING KIT <sup>①</sup>		
														PART NO.	BOLT SIZE	O-RING
2	1 1/4	1117-32-20	3.25	4.00	1.50	3.062	1.688	1.16	.53	.50	-----	1.75	2.500	MK 582	1/2-13 X 1 3/4	228
		1118-32-20							---				1/2-13	---	---	
2	1 1/2	1117-32-24	3.25	4.00	1.50	3.062	1.688	1.34	.53	.50	-----	2.00	2.500	MK 582	1/2-13 X 1 3/4	228
		1118-32-24							---				1/2-13	---	---	
2	2	1117-32-32	3.25	4.00	1.50	3.062	1.688	1.69	.53	.50	-----	2.50	2.500	MK 582	1/2-13 X 1 3/4	228
		1118-32-32							---				1/2-13	---	---	
2 1/2 <sup>②</sup>	1 1/2	1117-40-24	4.00	4.50	1.75	3.500	2.000	1.34	.53	.50	-----	2.00	3.000	MK 561	1/2-13 X 2	232
		1118-40-24							---				1/2-13	---	---	
2 1/2 <sup>②</sup>	2	1117-40-32	4.00	4.50	1.75	3.500	2.000	1.69	.53	.50	-----	2.50	3.000	MK 561	1/2-13 X 2	232
		1118-40-32							---				1/2-13	---	---	
2 1/2 <sup>②</sup>	2 1/2	1117-40-40	4.00	4.50	1.75	3.500	2.000	2.12	.53	.50	-----	3.00	3.000	MK 561	1/2-13 X 2	232
		1118-40-40							---				1/2-13	---	---	
3 <sup>③</sup>	2	1117-48-32	4.50	5.31	2.00	4.188	2.438	1.69	.66	.50	-----	2.50	3.625	MK 585	5/8-11 X 2 1/2	237
		1118-48-32							---				5/8-11	---	---	
3 <sup>③</sup>	2 1/2	1117-48-40	4.50	5.31	2.00	4.188	2.438	2.12	.66	.50	-----	3.00	3.625	MK 585	5/8-11 X 2 1/2	237
		1118-48-40							---				5/8-11	---	---	
3 <sup>③</sup>	3	1117-48-48	4.50	5.31	2.00	4.188	2.438	2.62	.66	.50	-----	3.50	3.625	MK 585	5/8-11 X 2 1/2	237
		1118-48-48							---				5/8-11	---	---	
3 1/2 <sup>④</sup>	2 1/2	1117-56-40	5.00	6.00	1.50	4.750	2.750	2.12	.66	.50	-----	3.00	4.109	MK 1571	5/8-11 X 2	241
		1118-56-40							---				5/8-11	---	---	
3 1/2 <sup>④</sup>	3	1117-56-48	5.00	6.00	1.50	4.750	2.750	2.62	.66	.50	-----	3.50	4.109	MK 1571	5/8-11 X 2	241
		1118-56-48							---				5/8-11	---	---	
3 1/2 <sup>④</sup>	3 1/2	1117-56-56	5.00	6.00	1.50	4.750	2.750	3.00	.66	.50	-----	4.00	4.109	MK 1571	5/8-11 X 2	241
		1118-56-56							---				5/8-11	---	---	
4 <sup>④</sup>	3	1117-64-48	5.50	6.38	1.50	5.125	3.062	2.62	.66	.50	-----	3.50	4.609	MK 1572	5/8-11 X 2	245
		1118-64-48							---				5/8-11	---	---	
4 <sup>④</sup>	4	1117-64-64	5.50	6.38	1.50	5.125	3.062	3.44	.66	.50	-----	4.50	4.609	MK 1572	5/8-11 X 2	245
		1118-64-64							---				5/8-11	---	---	

① Order Separately    ② 2500 PSI Max    ③ 2000 PSI Max    ④ 500 PSI Max

MATERIAL : STEEL  
1/07