

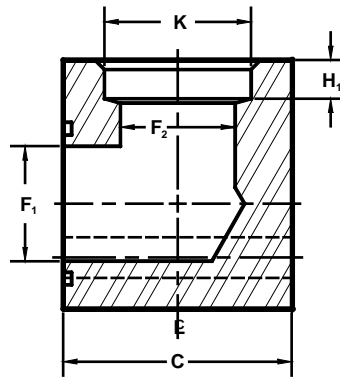
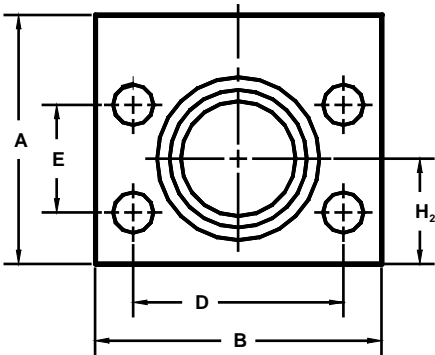
Developers and Manufacturers of Hydraulic Flanges & Components

SOCKET WELD ELBOW PIPE FLANGES

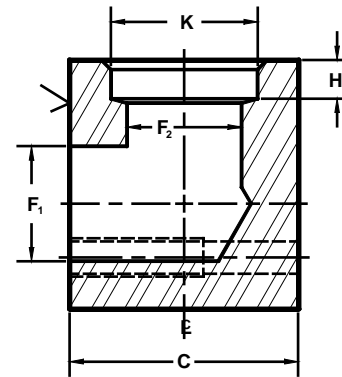
ISO 6162-2 PATTERN / J518 62 SERIES METRIC

O-Ring Style

Companion Style
(Flat Face)



Model 1127



Model 1128

| FLANGE SIZE | PIPE SIZE | PART NUMBER | A | B | C | D | E | F ₁ | F ₂ | H ₁ | H ₂ | K | MOUNTING KIT ^① | | |
|-------------|-----------|----------------|------|------|------|------------------|------------------|----------------|----------------|----------------|----------------|------------------|---------------------------|-----------|--------|
| | | | | | | | | | | | | | PART NO. | BOLT SIZE | O-RING |
| 13 | 1/2 | 1127-08-08M8 | 51.0 | 56.5 | 37.0 | 40.49 (1.594) | 18.24 (.718) | 12.5 | 12.5 | 9.7 | 22.4 | 21.84 (.860) | MKM 541 | M8 x 50 | 210 |
| | | 1128-08-08M8 | | | | | | | | | | | ----- | ----- | --- |
| 19 | 3/4 | 1127-12-08M10 | 57.0 | 71.5 | 43.0 | 50.80 (2.000) | 23.80 (.937) | 19.0 | 12.5 | 9.7 | 25.4 | 21.84 (.860) | MKM 542 | M10 x 60 | 214 |
| | | 1128-12-08M10 | | | | | | | | | | | ----- | ----- | --- |
| 19 | 3/4 | 1127-12-12M10 | 57.0 | 71.5 | 43.0 | 50.80 (2.000) | 23.80 (.937) | 19.0 | 19.0 | 12.7 | 25.4 | 27.18 (1.070) | MKM 542 | M10 x 60 | 214 |
| | | 1128-12-12M10 | | | | | | | | | | | ----- | ----- | --- |
| 19 | 3/4 | 1127-12-16M10 | 57.0 | 71.5 | 56.0 | 50.80 (2.000) | 23.80 (.937) | 19.0 | 19.0 | 12.7 | 25.4 | 33.91 (1.335) | MKM 576 | M10 x 70 | 214 |
| | | 1128-12-16M10 | | | | | | | | | | | ----- | ----- | --- |
| 25 | 1 | 1127-16-12M12 | 63.5 | 81.0 | 56.0 | 57.15 (2.250) | 27.76 (1.093) | 25.0 | 19.0 | 12.7 | 28.4 | 27.18 (1.070) | MKM 2533 | M12 x 75 | 219 |
| | | 1128-16-12M12 | | | | | | | | | | | ----- | ----- | --- |
| 25 | 1 | 1127-16-16M12 | 63.5 | 81.0 | 56.0 | 57.15 (2.250) | 27.76 (1.093) | 25.0 | 25.0 | 12.7 | 28.4 | 33.91 (1.335) | MKM 2533 | M12 x 75 | 219 |
| | | 1128-16-16M12 | | | | | | | | | | | ----- | ----- | --- |
| 25 | 1 | 1127-16-20M12 | 63.5 | 81.0 | 62.0 | 57.15 (2.250) | 27.76 (1.093) | 25.0 | 25.0 | 12.7 | 28.4 | 42.67 (1.680) | MKM 5550 | M12 x 80 | 219 |
| | | 1128-16-20M12 | | | | | | | | | | | ----- | ----- | --- |
| 32 | 1 1/4 | 1127-20-16M12 | 76.0 | 95.5 | 62.0 | 66.68 (2.625) | 31.75 (1.250) | 31.5 | 25.0 | 12.7 | 35.0 | 33.91 (1.335) | MKM 578 | M12 x 80 | 222 |
| | | 1128-20-16M12 | | | | | | | | | | | ----- | ----- | --- |
| 32 | 1 1/4 | 1127-20-16M14* | 76.0 | 95.5 | 62.0 | 66.68 (2.625) | 31.75 (1.250) | 31.5 | 25.0 | 12.7 | 35.0 | 33.91 (1.335) | MKM 1530 | M14 x 80 | 222 |
| | | 1128-20-16M14* | | | | | | | | | | | ----- | ----- | --- |
| 32 | 1 1/4 | 1127-20-20M12 | 76.0 | 95.5 | 62.0 | 66.68 (2.625) | 31.75 (1.250) | 31.5 | 31.5 | 12.7 | 35.0 | 42.67 (1.680) | MKM 578 | M12 x 80 | 222 |
| | | 1128-20-20M12 | | | | | | | | | | | ----- | ----- | --- |
| 32 | 1 1/4 | 1127-20-20M14* | 76.0 | 95.5 | 62.0 | 66.68 (2.625) | 31.75 (1.250) | 31.5 | 31.5 | 12.7 | 35.0 | 42.67 (1.680) | MKM 1530 | M14 x 80 | 222 |
| | | 1128-20-20M14* | | | | | | | | | | | ----- | ----- | --- |
| 32 | 1 1/4 | 1127-20-24M12 | 76.0 | 95.5 | 75.0 | 66.68 (2.625) | 31.75 (1.250) | 31.5 | 31.5 | 12.7 | 35.0 | 48.77 (1.920) | MKM 5551 | M12 x 90 | 222 |
| | | 1128-20-24M12 | | | | | | | | | | | ----- | ----- | --- |
| 32 | 1 1/4 | 1127-20-24M14* | 76.0 | 95.5 | 75.0 | 66.68 (2.625) | 31.75 (1.250) | 31.5 | 31.5 | 12.7 | 35.0 | 48.77 (1.920) | MKM 587 | M14 x 100 | 222 |
| | | 1128-20-24M14* | | | | | | | | | | | ----- | ----- | --- |

① Order Separately

*Non Standard Bolt For This Flange Size.

MATERIAL : STEEL
1/07

NOTE: DIMENSIONS ARE IN MILLIMETERS. INCH EQUIVALENTS IN ().

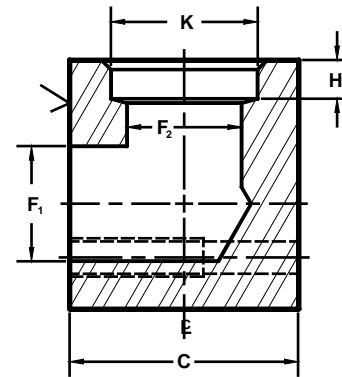
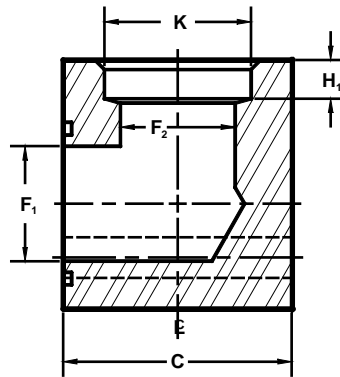
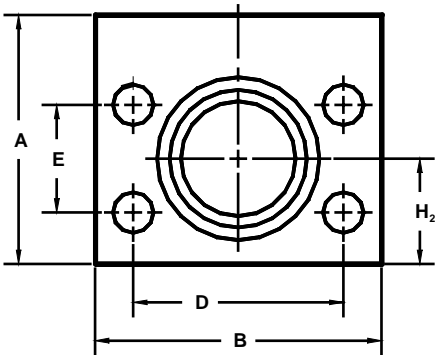
Developers and Manufacturers of Hydraulic Flanges & Components

SOCKET WELD ELBOW PIPE FLANGES

ISO 6162-2 PATTERN / J518 62 SERIES METRIC

O-Ring Style

Companion Style
(Flat Face)



Model 1127

Model 1128

| FLANGE SIZE | PIPE SIZE | PART NUMBER | A | B | C | D | E | F ₁ | F ₂ | H ₁ | H ₂ | K | MOUNTING KIT ^① | | |
|-----------------|-----------|---------------|-------|-------|-------|-------------------|------------------|----------------|----------------|----------------|----------------|------------------|---------------------------|-----------|--------|
| | | | | | | | | | | | | | PART NO. | BOLT SIZE | O-RING |
| 38 | 1½ | 1 | 89.0 | 114.5 | 75.0 | 79.38 (3.125) | 36.50 (1.437) | 38.0 | 25.0 | 12.7 | 41.1 | 33.91 (1.335) | MKM 553 | M16 x 100 | 225 |
| | | 1127-24-16M16 | | | | | | | | | | | ----- | --- | |
| 38 | 1½ | 1¼ | 89.0 | 114.5 | 75.0 | 79.38 (3.125) | 36.50 (1.437) | 38.0 | 31.5 | 12.7 | 41.1 | 42.67 (1.680) | MKM 553 | M16 x 100 | 225 |
| | | 1127-24-20M16 | | | | | | | | | | | ----- | --- | |
| 38 | 1½ | 1½ | 89.0 | 114.5 | 75.0 | 79.38 (3.125) | 36.50 (1.437) | 38.0 | 38.0 | 12.7 | 41.1 | 48.77 (1.920) | MKM 553 | M16 x 100 | 225 |
| | | 1127-24-24M16 | | | | | | | | | | | ----- | --- | |
| 38 | 1½ | 2 | 89.0 | 114.5 | 88.0 | 79.38 (3.125) | 36.50 (1.437) | 38.0 | 38.0 | 12.7 | 41.1 | 61.24 (2.411) | MKM 1598 | M16 x 120 | 225 |
| | | 1127-24-32M16 | | | | | | | | | | | ----- | --- | |
| 51 | 2 | 1¼ | 101.5 | 133.5 | 88.0 | 96.82 (3.812) | 44.45 (1.750) | 49.2 | 31.5 | 12.7 | 50.8 | 42.67 (1.680) | MKM 554 | M20 x 120 | 228 |
| | | 1127-32-20M20 | | | | | | | | | | | ----- | --- | |
| 51 | 2 | 1½ | 101.5 | 133.5 | 88.0 | 96.82 (3.812) | 44.45 (1.750) | 49.2 | 38.0 | 12.7 | 50.8 | 48.77 (1.920) | MKM 554 | M20 x 120 | 228 |
| | | 1127-32-24M20 | | | | | | | | | | | ----- | --- | |
| 51 | 2 | 2 | 101.5 | 133.5 | 88.0 | 96.82 (3.812) | 44.45 (1.750) | 49.2 | 49.2 | 12.7 | 50.8 | 61.24 (2.411) | MKM 554 | M20 x 120 | 228 |
| | | 1127-32-32M20 | | | | | | | | | | | ----- | --- | |
| 51 | 2 | 2½ | 101.5 | 133.5 | 101.0 | 96.82 (3.812) | 44.45 (1.750) | 49.2 | 49.2 | 12.7 | 50.8 | 73.94 (2.911) | MKM 1507 | M20 x 130 | 228 |
| | | 1127-32-40M20 | | | | | | | | | | | ----- | --- | |
| 64 ^② | 2½ | 2 | 140.0 | 175.0 | 114.5 | 123.82 (4.875) | 58.72 (2.312) | 62.0 | 49.2 | 15.7 | 63.5 | 61.24 (2.411) | MKM 2557 | M24 x 150 | 232 |
| | | 1127-40-32M24 | | | | | | | | | | | ----- | --- | |
| 64 ^② | 2½ | 2½ | 140.0 | 175.0 | 114.5 | 123.82 (4.875) | 58.72 (2.312) | 62.0 | 62.0 | 15.7 | 63.5 | 73.94 (2.911) | MKM 2557 | M24 x 150 | 232 |
| | | 1127-40-40M24 | | | | | | | | | | | ----- | --- | |
| 64 ^② | 2½ | 3 | 140.0 | 175.0 | 127.0 | 123.82 (4.875) | 58.72 (2.312) | 62.0 | 62.0 | 15.7 | 63.5 | 89.92 (3.540) | MKM 5555 | M24 x 180 | 232 |
| | | 1127-40-48M24 | | | | | | | | | | | ----- | --- | |
| 76 ^② | 3 | 2½ | 152.5 | 216.0 | 127.0 | 152.40 (6.000) | 71.42 (2.812) | 74.6 | 62.0 | 15.7 | 76.2 | 73.94 (2.911) | MKM 556 | M30 x 180 | 237 |
| | | 1127-48-40M30 | | | | | | | | | | | ----- | --- | |
| 76 ^② | 3 | 3 | 152.5 | 216.0 | 127.0 | 152.40 (6.000) | 71.42 (2.812) | 74.6 | 74.6 | 15.7 | 76.2 | 89.92 (3.540) | MKM 556 | M30 x 180 | 237 |
| | | 1127-48-48M30 | | | | | | | | | | | ----- | --- | |

① Order Separately ② Not included in ISO 6162 / J518 specifications

MATERIAL : STEEL
1/07

NOTE: DIMENSIONS ARE IN MILLIMETERS. INCH EQUIVALENTS IN ().