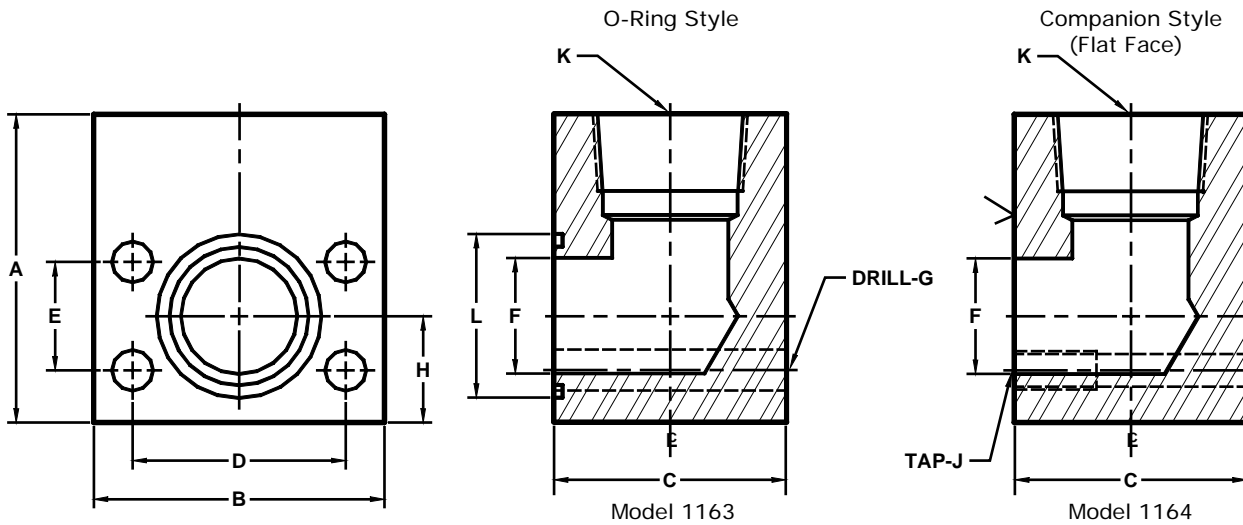


Developers and Manufacturers of Hydraulic Flanges & Components

NPTF THREADED ELBOW PIPE FLANGES

SAE BOLT PATTERN

62 SERIES



FLANGE SIZE	PIPE SIZE	PART NUMBER	A	B	C	D	E	F	G	H	J	K	L	MOUNTING KIT ^①		
														PART NO.	BOLT SIZE	O-RING
1/2	1/2	1163-08-08	2.00	2.22	1.46	1.594	.718	.50	.34	.88	---	1/2	1.000	MK 541	5/16-18 X 2	210
		---							---					---		
3/4	1/2	1163-12-08	2.50	2.81	1.70	2.000	.937	.75	.41	1.00	---	1/2	1.250	MK 542	3/8-16 X 2 1/2	214
		---							---					---		
3/4	3/4	1163-12-12	2.50	2.81	1.70	2.000	.937	.75	.41	1.00	---	3/4	1.250	MK 542	3/8-16 X 2 1/2	214
		---							---					---		
1	3/4	1163-16-12	3.00	3.19	1.96	2.250	1.093	1.00	.47	1.12	---	3/4	1.562	MK 551	7/16-14 X 2 3/4	219
		---							---					---		
1	1	1163-16-16	3.00	3.19	1.96	2.250	1.093	1.00	.47	1.12	---	1	1.562	MK 551	7/16-14 X 2 3/4	219
		---							---					---		
1 1/4	1	1163-20-16	4.00	3.75	2.44	2.625	1.250	1.25	.53	1.38	---	1	1.750	MK 552	1/2-13 X 3 1/4	222
		---							---					---		
1 1/4	1 1/4	1163-20-20	4.00	3.75	2.44	2.625	1.250	1.25	.53	1.38	---	1 1/4	1.750	MK 552	1/2-13 X 3 1/4	222
		---							---					---		
1 1/2	1 1/4	1163-24-20	4.00	4.50	2.96	3.125	1.437	1.50	.66	1.62	---	1 1/4	2.125	MK 553	5/8-11 X 4	225
		---							---					---		
1 1/2	1 1/2	1163-24-24	4.00	4.50	2.96	3.125	1.437	1.50	.66	1.62	---	1 1/2	2.125	MK 553	5/8-11 X 4	225
		---							---					---		
2	1 1/2	1163-32-24	5.00	5.25	3.46	3.812	1.750	1.94	.78	2.00	---	1 1/2	2.500	MK 554	3/4-10 X 4 1/2	228
		---							---					---		
2	2	1163-32-32	5.00	5.25	3.46	3.812	1.750	1.94	.78	2.00	---	2	2.500	MK 554	3/4-10 X 4 1/2	228
		---							---					---		
2 1/2 ^②	2	1163-40-32	6.00	6.88	4.00	4.875	2.312	2.44	.94	2.50	---	2	3.000	MK 555	7/8-9 X 5 1/2	232
		---							---					---		
2 1/2 ^②	2 1/2	1163-40-40	6.00	6.88	4.00	4.875	2.312	2.44	.94	2.50	---	2 1/2	3.000	MK 555	7/8-9 X 5 1/2	232
		---							---					---		
3 ^②	3	1163-48-48	7.00	8.50	5.00	6.000	2.812	2.94	1.19	3.00	---	3	3.625	MK 756	1 1/8-7 X 7	237
		---							---					---		

① Order Separately ② Not included in SAE J518 specifications

MATERIAL : STEEL
1/07