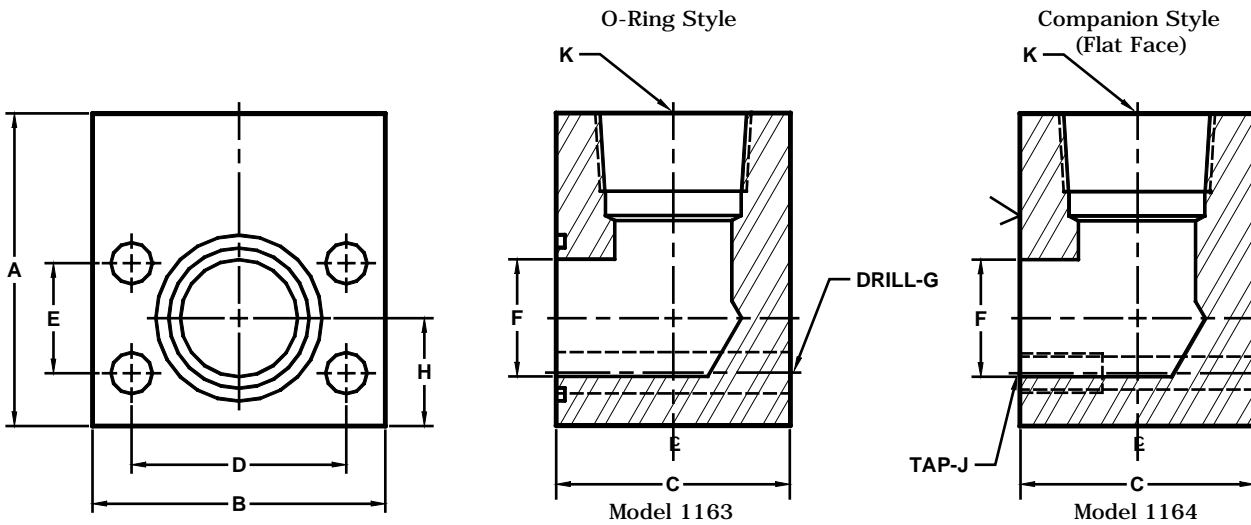


Developers and Manufacturers of Hydraulic Flanges & Components

NPTF THREADED ELBOW PIPE FLANGES

ISO 6162-2 PATTERN / J518 62 SERIES METRIC



FLANGE SIZE	PIPE SIZE	PART NUMBER	A	B	C	D	E	F	G	H	J	K NPTF	MOUNTING KIT ^①		
													PART NO.	BOLT SIZE	O-RING
13	1/2	1163-08-08M8	51.0	56.5	37.0	40.49	18.24	12.5	8.5	22.4	----	1/2	MKM 541	M8 x 50	210
		1164-08-08M8				(1.594)	(.718)		---		M8 x 1.25		-----	-----	
19	3/4	1163-12-12M10	63.5	71.5	43.0	50.80	23.80	19.0	10.5	25.4	----	3/4	MKM 542	M10 x 60	214
		1164-12-12M10				(2.000)	(.937)		---		M10 x 1.5		-----	-----	
25	1	1163-16-12M12	76.0	81.0	50.0	57.15	27.76	25.0	12.5	28.4	----	3/4	MKM 551	M12 x 70	219
		1164-16-12M12				(2.250)	(1.093)		---		M12 x 1.75		-----	-----	
25	1	1163-16-16M12	76.0	81.0	50.0	57.15	27.76	25.0	12.5	28.4	----	1	MKM 551	M12 x 70	219
		1164-16-16M12				(2.250)	(1.093)		---		M12 x 1.75		-----	-----	
32	1 1/4	1163-20-20M12	101.5	95.5	62.0	66.68	31.75	31.5	13.0	35.0	----	1 1/4	MKM 578	M12 x 80	222
		1164-20-20M12				(2.625)	(1.250)		---		M12 x 1.75		-----	-----	
32	1 1/4	1163-20-20M14*	101.5	95.5	62.0	66.68	31.75	31.5	15.0	35.0	----	1 1/4	MKM 1530	M14 x 80	222
		1164-20-20M14*				(2.625)	(1.250)		---		M14 x 2		-----	-----	
38	1 1/2	1163-24-20M16	101.5	114.5	75.0	79.38	36.50	38.0	17.0	41.1	----	1 1/4	MKM 553	M16 x 100	225
		1164-24-20M16				(3.125)	(1.437)		---		M16 x 2		-----	-----	
38	1 1/2	1163-24-24M16	101.5	114.5	75.0	79.38	36.50	38.0	17.0	41.1	----	1 1/2	MKM 553	M16 x 100	225
		1164-24-24M16				(3.125)	(1.437)		---		M16 x 2		-----	-----	
51	2	1163-32-24M20	127.0	133.5	88.0	96.82	44.45	49.2	21.0	50.8	----	1 1/2	MKM 554	M20 x 120	228
		1164-32-24M20				(3.812)	(1.750)		---		M20 x 2.5		-----	-----	
51	2	1163-32-32M20	127.0	133.5	88.0	96.82	44.45	49.2	21.0	50.8	----	2	MKM 554	M20 x 120	228
		1164-32-32M20				(3.812)	(1.750)		---		M20 x 2.5		-----	-----	
64 ^②	2 1/2	1163-40-32M24	152.5	175.0	101.5	123.82	58.72	62.0	25.5	63.5	----	2	MKM 555	M24 x 140	232
		1164-40-32M24				(4.875)	(2.312)		---		M24 x 3		-----	-----	
64 ^②	2 1/2	1163-40-40M24	152.5	175.0	101.5	123.82	58.72	62.0	25.5	63.5	----	2 1/2	MKM 555	M24 x 140	232
		1164-40-40M24				(4.875)	(2.312)		---		M24 x 3		-----	-----	
76 ^②	3	1163-48-48M30	178.0	216.0	127.0	152.40	71.42	74.6	32.0	76.2	----	3	MKM 556	M30 x 180	237
		1164-48-48M30				(6.000)	(2.812)		---		M30 x 3.5		-----	-----	

① Order Separately ② Not included in ISO 6162 specifications
* Non Standard Bolt For This Flange Size.

MATERIAL : STEEL
1/07

NOTE: DIMENSIONS ARE IN MILLIMETERS. INCH EQUIVALENTS IN ().