

Developers and Manufacturers of  
Hydraulic Flanges & Components

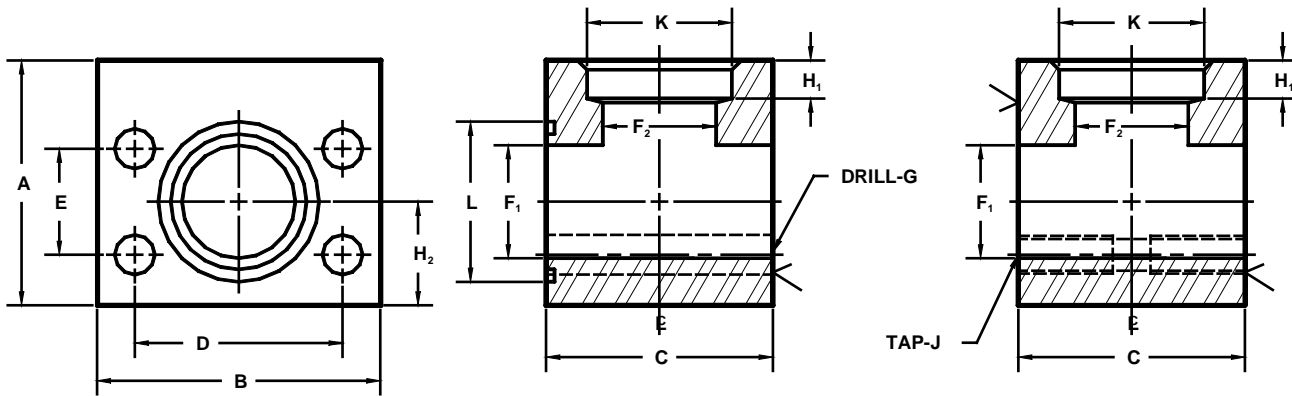
## SOCKET WELD RUN TEE PIPE FLANGES

SAE BOLT PATTERN

61 SERIES

O-Ring Style

Companion Style  
(Flat Face)



Model 1189

Model 1190

FLANGE SIZE	PIPE SIZE	PART NUMBER	A	B	C	D	E	F <sub>1</sub>	F <sub>2</sub>	G	H <sub>1</sub>	H <sub>2</sub>	J	K	L	O-RING <sup>①</sup>
1/2	1/2	1189-08-08	1.75	2.12	1.44	1.500	.688	.50	.50	.34	.38	.75	-----	.860	1.000	210
		1190-08-08								---			5/16-18			---
1/2	3/4	1189-08-12	2.00	2.12	1.70	1.500	.688	.50	.75	.34	.50	.75	-----	1.070	1.000	210
		1190-08-12								---			5/16-18			---
3/4	1/2	1189-12-08	2.00	2.62	1.70	1.875	.875	.75	.50	.41	.38	.88	-----	.860	1.250	214
		1190-12-08								---			3/8-16			---
3/4	3/4	1189-12-12	2.00	2.62	1.70	1.875	.875	.75	.75	.41	.50	.88	-----	1.070	1.250	214
		1190-12-12								---			3/8-16			---
3/4	1	1189-12-16	2.50	2.62	1.94	1.875	.875	.75	.75	.41	.50	.88	-----	1.335	1.250	214
		1190-12-16								---			3/8-16			---
1	1/2	1189-16-08	2.25	2.82	1.94	2.062	1.031	1.00	.50	.41	.38	1.00	-----	.860	1.562	219
		1190-16-08								---			3/8-16			---
1	3/4	1189-16-12	2.25	2.82	1.94	2.062	1.031	1.00	.75	.41	.50	1.00	-----	1.070	1.562	219
		1190-16-12								---			3/8-16			---
1	1	1189-16-16	2.25	2.82	1.94	2.062	1.031	1.00	1.00	.41	.50	1.00	-----	1.335	1.562	219
		1190-16-16								---			3/8-16			---
1	1 1/4	1189-16-20	3.00	3.00	2.50	2.062	1.031	1.00	1.00	.41	.50	1.25	-----	1.680	1.562	219
		1190-16-20								---			3/8-16			---
1 1/4	1/2	1189-20-08	2.75	3.19	2.40	2.312	1.188	1.25	.50	.47	.38	1.25	-----	.860	1.750	222
		1190-20-08								---			7/16-14			---
1 1/4	3/4	1189-20-12	2.75	3.19	2.40	2.312	1.188	1.25	.75	.47	.50	1.25	-----	1.070	1.750	222
		1190-20-12								---			7/16-14			---
1 1/4	1	1189-20-16	2.75	3.19	2.40	2.312	1.188	1.25	1.00	.47	.50	1.25	-----	1.335	1.750	222
		1190-20-16								---			7/16-14			---
1 1/4	1 1/4	1189-20-20	2.75	3.19	2.40	2.312	1.188	1.25	1.25	.47	.50	1.25	-----	1.680	1.750	222
		1190-20-20								---			7/16-14			---
1 1/4	1 1/2	1189-20-24	3.00	3.19	3.00	2.312	1.188	1.25	1.25	.47	.50	1.25	-----	1.920	1.750	222
		1190-20-24								---			7/16-14			---

① Included

MATERIAL : STEEL  
1/07

Developers and Manufacturers of  
Hydraulic Flanges & Components

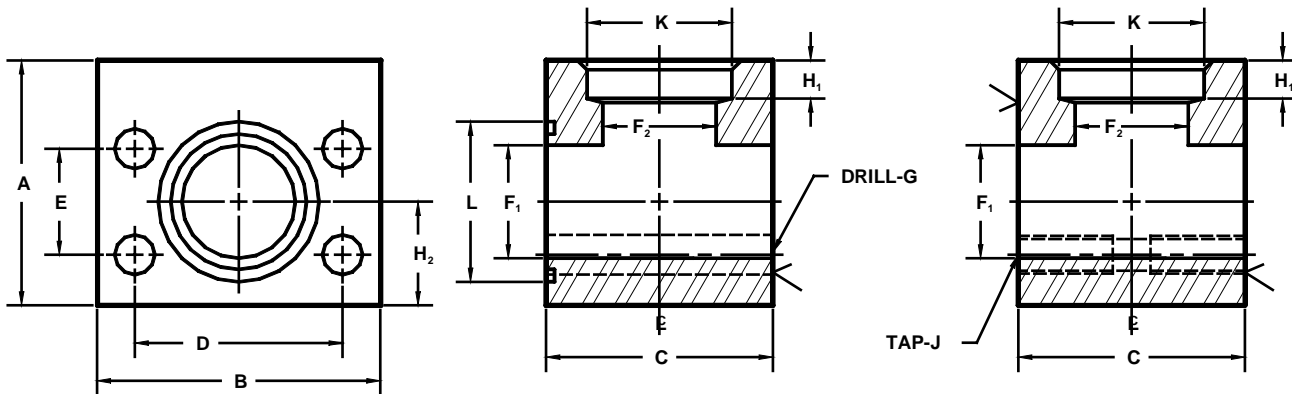
## SOCKET WELD RUN TEE PIPE FLANGES

SAE BOLT PATTERN

61 SERIES

O-Ring Style

Companion Style  
(Flat Face)



Model 1189

Model 1190

FLANGE SIZE	PIPE SIZE	PART NUMBER	A	B	C	D	E	F <sub>1</sub>	F <sub>2</sub>	G	H <sub>1</sub>	H <sub>2</sub>	J	K	L	O-RING <sup>①</sup>
1½	¾	1189-24-12	3.00	3.75	2.90	2.750	1.406	1.50	.75	.53	.50	1.38	----	1.070	2.125	225
		---								1/2-13			---			
1½	1	1189-24-16	3.00	3.75	2.90	2.750	1.406	1.50	1.00	.53	.50	1.38	----	1.335	2.125	225
		---								1/2-13			---			
1½	1¼	1189-24-20	3.00	3.75	2.90	2.750	1.406	1.50	1.25	.53	.50	1.38	----	1.680	2.125	225
		---								1/2-13			---			
1½	1½	1189-24-24	3.00	3.75	2.90	2.750	1.406	1.50	1.50	.53	.50	1.38	----	1.920	2.125	225
		---								1/2-13			---			
1½	2	1189-24-32	3.50	3.75	3.50	2.750	1.406	1.50	1.50	.53	.50	1.38	----	2.411	2.125	225
		---								1/2-13			---			
2	1	1189-32-16	3.50	4.00	3.40	3.062	1.688	1.94	1.00	.53	.50	1.62	----	1.335	2.500	228
		---								1/2-13			---			
2	1¼	1189-32-20	3.50	4.00	3.40	3.062	1.688	1.94	1.25	.53	.50	1.62	----	1.680	2.500	228
		---								1/2-13			---			
2	1½	1189-32-24	3.50	4.00	3.40	3.062	1.688	1.94	1.50	.53	.50	1.62	----	1.920	2.500	228
		---								1/2-13			---			
2	2	1189-32-32	3.50	4.00	3.40	3.062	1.688	1.94	1.94	.53	.50	1.62	----	2.411	2.500	228
		---								1/2-13			---			
2	2½	1189-32-40	3.50	4.00	4.00	3.062	1.688	1.94	1.94	.53	.50	1.62	----	2.911	2.500	228
		---								1/2-13			---			
2½ <sup>②</sup>	1½	1189-40-24	4.00	4.50	3.96	3.500	2.000	2.44	1.50	.53	.50	2.00	----	1.920	3.000	232
		---								1/2-13			---			
2½ <sup>②</sup>	2	1189-40-32	4.00	4.50	3.96	3.500	2.000	2.44	1.94	.53	.50	2.00	----	2.411	3.000	232
		---								1/2-13			---			
2½ <sup>②</sup>	2½	1189-40-40	4.00	4.50	3.96	3.500	2.000	2.44	2.44	.53	.50	2.00	----	2.911	3.000	232
		---								1/2-13			---			
2½ <sup>②</sup>	3	1189-40-48	4.50	5.00	5.00	3.500	2.000	2.44	2.44	.53	.62	2.00	----	3.540	3.000	232
		---								1/2-13			---			

① Included    ② 2500 PSI Max.

MATERIAL : STEEL  
1/07

Developers and Manufacturers of  
Hydraulic Flanges & Components

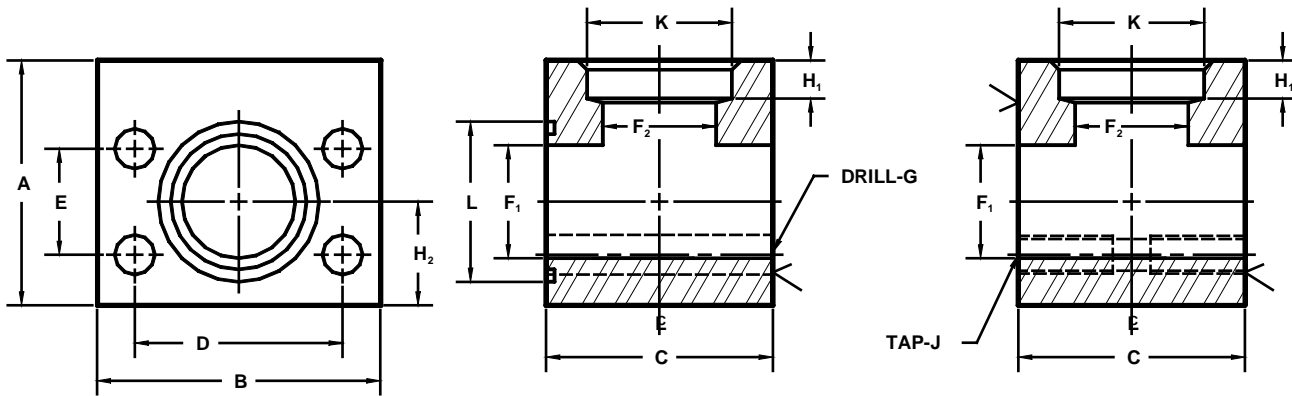
## SOCKET WELD RUN TEE PIPE FLANGES

SAE BOLT PATTERN

61 SERIES

O-Ring Style

Companion Style  
(Flat Face)



Model 1189

Model 1190

FLANGE SIZE	PIPE SIZE	PART NUMBER	A	B	C	D	E	F <sub>1</sub>	F <sub>2</sub>	G	H <sub>1</sub>	H <sub>2</sub>	J	K	L	O-RING <sup>①</sup>
3 <sup>③</sup>	2	1189-48-32	5.00	5.31	4.96	4.188	2.438	2.94	1.94	.66	.50	2.25	-----	2.411	3.625	237
		1190-48-32								---			5/8-11			---
3 <sup>③</sup>	2½	1189-48-40	5.00	5.31	4.96	4.188	2.438	2.94	2.44	.66	.62	2.25	-----	2.911	3.625	237
		1190-48-40								---			5/8-11			---
3 <sup>③</sup>	3	1189-48-48	5.00	5.31	4.96	4.188	2.438	2.94	2.94	.66	.62	2.25	-----	3.540	3.625	237
		1190-48-48								---			5/8-11			---
3 <sup>③</sup>	3½	1189-48-56	5.00	5.31	5.50	4.188	2.438	2.94	2.94	.66	.62	2.25	-----	4.045	3.625	237
		1190-48-56								---			5/8-11			---
3½ <sup>④</sup>	2½	1189-56-40	5.50	6.00	5.40	4.750	2.750	3.44	2.44	.66	.62	2.50	-----	2.911	4.109	241
		1190-56-40								---			5/8-11			---
3½ <sup>④</sup>	3	1189-56-48	5.50	6.00	5.40	4.750	2.750	3.44	2.94	.66	.62	2.50	-----	3.540	4.109	241
		1190-56-48								---			5/8-11			---
3½ <sup>④</sup>	3½	1189-56-56	5.50	6.00	5.40	4.750	2.750	3.44	3.44	.66	.62	2.50	-----	4.045	4.109	241
		1190-56-56								---			5/8-11			---
3½ <sup>④</sup>	4	1189-56-64	5.50	6.00	6.00	4.750	2.750	3.44	3.44	.66	.62	2.50	-----	4.550	4.109	241
		1190-56-64								---			5/8-11			---
4 <sup>④</sup>	3	1189-64-48	6.00	6.38	5.96	5.125	3.062	3.94	2.94	.66	.62	2.75	-----	3.540	4.609	245
		1190-64-48								---			5/8-11			---
4 <sup>④</sup>	3½	1189-64-56	6.00	6.38	5.96	5.125	3.062	3.94	3.44	.66	.62	2.75	-----	4.045	4.609	245
		1190-64-56								---			5/8-11			---
4 <sup>④</sup>	4	1189-64-64	6.00	6.38	5.96	5.125	3.062	3.94	3.94	.66	.62	2.75	-----	4.550	4.609	245
		1190-64-64								---			5/8-11			---
4 <sup>④</sup>	5	1189-64-80	6.00	7.00	7.00	5.125	3.062	3.94	3.94	.66	.62	2.75	-----	5.635	4.609	245
		1190-64-80								---			5/8-11			---
5 <sup>④</sup>	4	1189-80-64	7.00	7.25	6.90	6.000	3.625	4.94	3.94	.66	.62	3.38	-----	4.550	5.609	253
		1190-80-64								---			5/8-11			---
5 <sup>④</sup>	5	1189-80-80	7.00	7.25	6.90	6.000	3.625	4.94	4.94	.66	.62	3.38	-----	5.635	5.609	253
		1190-80-80								---			5/8-11			---

① Included    ③ 2000 PSI Max    ④ 500 PSI Max

MATERIAL : STEEL  
1/07