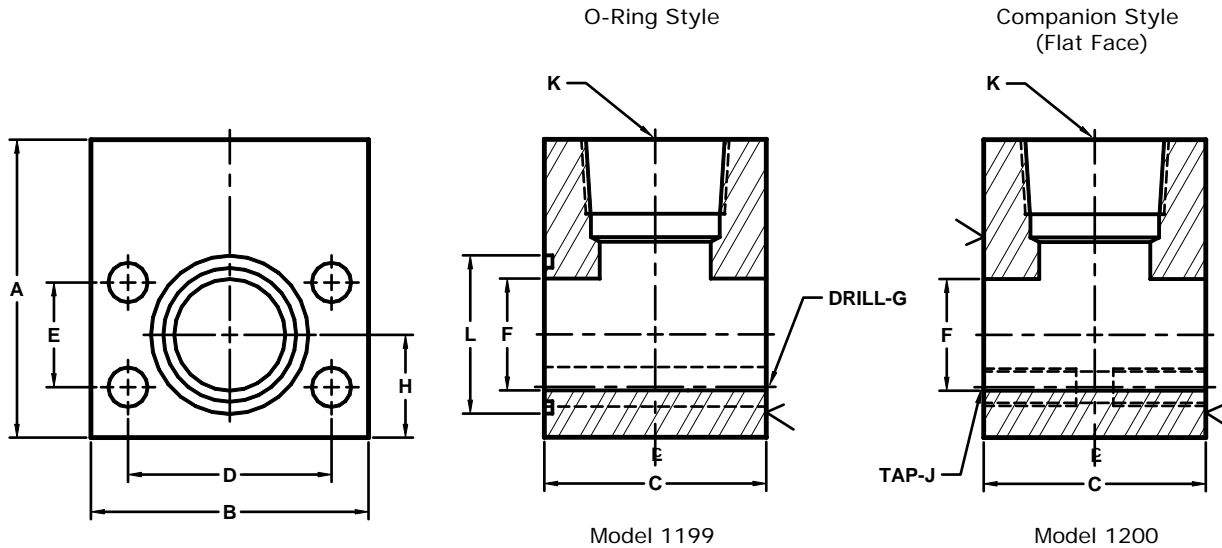


Developers and Manufacturers of Hydraulic Flanges & Components

NPTF THREADED RUN TEE PIPE FLANGES

SAE BOLT PATTERN

62 SERIES



FLANGE SIZE	PIPE SIZE	PART NUMBER	A	B	C	D	E	F	G	H	J	K	L	O-RING ^①
1/2	1/2	1199-08-08	2.00	2.22	1.46	1.594	.718	.50	.34	.88	----	1/2	1.000	210
		1200-08-08							---		5/16-18		----	
1/2	3/4	1199-08-12	2.75	2.22	1.75	1.594	.718	.50	.34	.88	----	3/4	1.000	210
		1200-08-12							---		5/16-18		----	
3/4	1/2	1199-12-08	2.50	2.81	1.70	2.000	.937	.75	.41	1.00	----	1/2	1.250	214
		1200-12-08							---		3/8-16		----	
3/4	3/4	1199-12-12	2.50	2.81	1.70	2.000	.937	.75	.41	1.00	----	3/4	1.250	214
		1200-12-12							---		3/8-16		----	
1	3/4	1199-16-12	3.00	3.19	1.96	2.250	1.093	1.00	.47	1.12	----	3/4	1.562	219
		1200-16-12							---		7/16-14		----	
1	1	1199-16-16	3.00	3.19	1.96	2.250	1.093	1.00	.47	1.12	----	1	1.562	219
		1200-16-16							---		7/16-14		----	
1 1/4	1	1199-20-16	4.00	3.75	2.44	2.625	1.250	1.25	.53	1.38	----	1	1.750	222
		1200-20-16							---		1/2-13		----	
1 1/4	1 1/4	1199-20-20	4.00	3.75	2.44	2.625	1.250	1.25	.53	1.38	----	1 1/4	1.750	222
		1200-20-20							---		1/2-13		----	
1 1/2	1 1/4	1199-24-20	4.00	4.50	2.96	3.125	1.437	1.50	.66	1.62	----	1 1/4	2.125	225
		1200-24-20							---		5/8-11		----	
1 1/2	1 1/2	1199-24-24	4.00	4.50	2.96	3.125	1.437	1.50	.66	1.62	----	1 1/2	2.125	225
		1200-24-24							---		5/8-11		----	
2	1 1/2	1199-32-24	5.00	5.25	3.46	3.812	1.750	1.94	.78	2.00	----	1 1/2	2.500	228
		1200-32-24							---		3/4-10		----	
2	2	1199-32-32	5.00	5.25	3.46	3.812	1.750	1.94	.78	2.00	----	2	2.500	228
		1200-32-32							---		3/4-10		----	
2 1/2 ^②	2 1/2	1199-40-40	6.00	6.88	4.00	4.875	2.312	2.44	.94	2.50	----	2 1/2	3.000	232
		1200-40-40							---		7/8-9		----	
3 ^②	3	1199-48-48	7.00	8.50	5.00	6.000	2.812	2.94	1.19	3.00	----	3	3.625	237
		1200-48-48							---		1 1/8-7		----	

① Included ② Not included in SAE J518 specifications

MATERIAL : STEEL
1/07