

Developers and Manufacturers of  
Hydraulic Flanges & Components

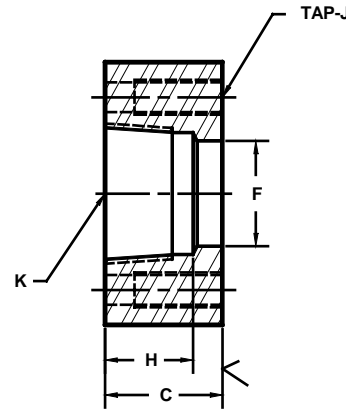
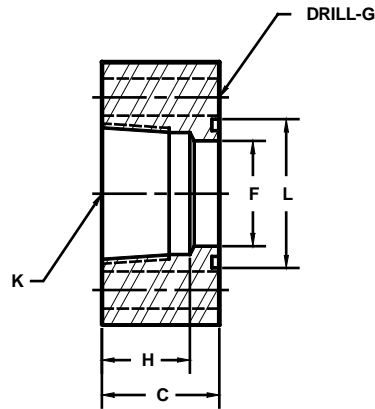
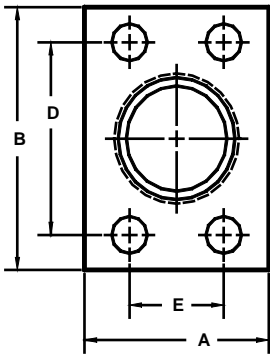
## BSPT THREADED IN-LINE PIPE FLANGES

SAE BOLT PATTERN

61 SERIES

O-Ring Style

Companion Style  
(Flat Face)



Model 1355

Model 1356

FLANGE SIZE	PIPE SIZE	PART NUMBER	A	B	C	D	E	F	G	H	J	K	L	MOUNTING KIT <sup>①</sup>		
														PART NO.	BOLT SIZE	O-RING
1/2	1/2	1355-08-08	1.50	2.12	1.25	1.500	.688	.50	.34	1.06	----	1/2	1.000	MK 519	5/16-18 X 1 3/4	210
		----							5/16-18		----		----			
1/2	3/4	1356-08-12	1.75	2.12	2.50	1.500	.688	.50	----	1.06	----	3/4	----	----	----	----
		----							5/16-18		----		----			
3/4	1/2	1355-12-08	1.75	2.62	1.25	1.875	.875	.70	.41	NA	----	1/2	1.250	MK 520	3/8-16 X 2	214
		----							3/8-16		----		----			
3/4	3/4	1355-12-12	1.75	2.62	1.25	1.875	.875	.75	.41	1.06	----	3/4	1.250	MK 520	3/8-16 X 2	214
		----							3/8-16		----		----			
3/4	1	1356-12-16	2.00	2.62	2.50	1.875	.875	.75	----	1.25	3/8-16	1	----	----	----	----
		----							3/8-16		----		----			
1	3/4	1355-16-12	2.00	2.82	1.50	2.062	1.031	.92	.41	NA	----	3/4	1.562	MK 521	3/8-16 X 2 1/4	219
		----							3/8-16		----		----			
1	1	1355-16-16	2.00	2.82	1.50	2.062	1.031	1.00	.41	1.25	----	1	1.562	MK 521	3/8-16 X 2 1/4	219
		----							3/8-16		----		----			
1	1 1/4	1356-16-20	2.50	2.82	3.00	2.062	1.031	1.00	----	1.31	3/8-16	1 1/4	----	----	----	----
		----							3/8-16		----		----			
1 1/4	1	1355-20-16	2.50	3.19	1.50	2.312	1.188	1.16	.47	NA	----	1	1.750	MK 522	7/16-14 X 2 1/4	222
		----							7/16-14		----		----			
1 1/4	1 1/4	1355-20-20	2.50	3.19	1.50	2.312	1.188	1.25	.47	1.31	----	1 1/4	1.750	MK 522	7/16-14 X 2 1/4	222
		----							7/16-14		----		----			
1 1/4	1 1/2	1356-20-24	3.00	3.19	3.00	2.312	1.188	1.25	----	1.31	7/16-14	1 1/2	----	----	----	----
		----							7/16-14		----		----			
1 1/2	1 1/4	1355-24-20	2.75	3.75	1.75	2.750	1.406	1.50	.53	NA	----	1 1/4	2.125	MK 523	1/2-13 X 2 1/2	225
		----							1/2-13		----		----			
1 1/2	1 1/2	1355-24-24	2.75	3.75	1.75	2.750	1.406	1.50	.53	1.31	----	1 1/2	2.125	MK 523	1/2-13 X 2 1/2	225
		----							1/2-13		----		----			
1 1/2	2	1356-24-32	3.50	3.75	3.50	2.750	1.406	1.50	----	1.31	1/2-13	2	----	----	----	----
		----							1/2-13		----		----			

① Order Separately

MATERIAL : STEEL  
1/07

Developers and Manufacturers of  
Hydraulic Flanges & Components

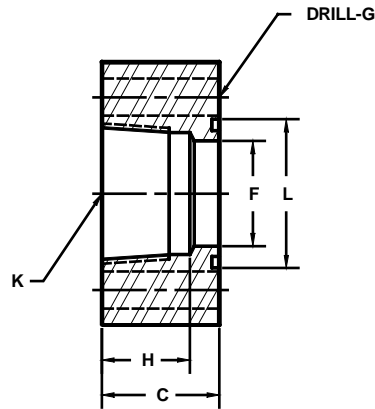
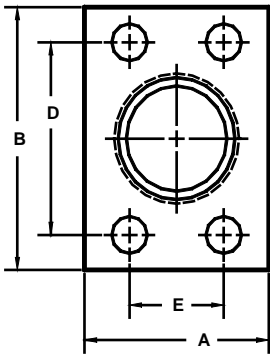
## BSPT THREADED IN-LINE PIPE FLANGES

SAE BOLT PATTERN

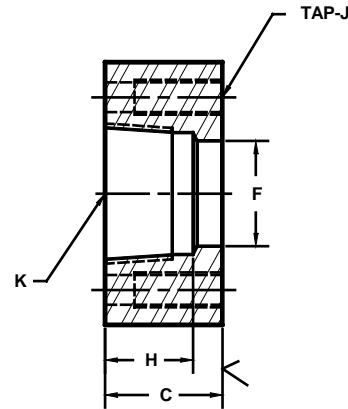
61 SERIES

O-Ring Style

Companion Style  
(Flat Face)



Model 1355



Model 1356

FLANGE SIZE	PIPE SIZE	PART NUMBER	A	B	C	D	E	F	G	H	J	K	L	MOUNTING KIT <sup>①</sup>		
														PART NO.	BOLT SIZE	O-RING
2	1 1/4	1355-32-20	3.25	4.00	1.75	3.062	1.688	1.50	.53	NA	-----	1 1/4	2.500	MK 524	1/2-13 X 2 1/2	228
		---							1/2-13				-----	---		
2	1 1/2	1355-32-24	3.25	4.00	1.75	3.062	1.688	1.74	.53	NA	-----	1 1/2	2.500	MK 524	1/2-13 X 2 1/2	228
		---							1/2-13				-----	---		
2	2	1355-32-32	3.25	4.00	1.75	3.062	1.688	1.94	.53	1.31	-----	2	2.500	MK 524	1/2-13 X 2 1/2	228
		---							1/2-13				-----	---		
2 1/2 <sup>②</sup>	1 1/2	1355-40-24	4.00	4.50	2.00	3.500	2.000	1.74	.53	NA	-----	1 1/2	3.000	MK 1515	1/2-13 X 2 3/4	232
		---							1/2-13				-----	---		
2 1/2 <sup>②</sup>	2	1355-40-32	4.00	4.50	2.00	3.500	2.000	2.12	.53	NA	-----	2	3.000	MK 1515	1/2-13 X 2 3/4	232
		---							1/2-13				-----	---		
2 1/2 <sup>②</sup>	2 1/2	1355-40-40	4.00	4.50	2.00	3.500	2.000	2.44	.53	1.59	-----	2 1/2	3.000	MK 1515	1/2-13 X 2 3/4	232
		---							1/2-13				-----	---		
3 <sup>③</sup>	2	1355-48-32	4.50	5.50	2.25	4.188	2.438	2.12	.66	NA	-----	2	3.625	MK 1516	5/8-11 X 3 1/2	237
		---							5/8-11				-----	---		
3 <sup>③</sup>	2 1/2	1355-48-40	4.50	5.50	2.25	4.188	2.438	2.62	.66	NA	-----	2 1/2	3.625	MK 1516	5/8-11 X 3 1/2	237
		---							5/8-11				-----	---		
3 <sup>③</sup>	3	1355-48-48	4.50	5.50	2.25	4.188	2.438	2.94	.66	1.91	-----	3	3.625	MK 1516	5/8-11 X 3 1/2	237
		---							5/8-11				-----	---		
3 1/2 <sup>④</sup>	2 1/2	1355-56-40	5.00	6.00	1.50	4.750	2.750	2.62	.66	NA	-----	2 1/2	4.109	MK 509	5/8-11 X 2 1/2	241
		---							5/8-11				-----	---		
3 1/2 <sup>④</sup>	3	1355-56-48	5.00	6.00	1.50	4.750	2.750	3.20	.66	NA	-----	3	4.109	MK 509	5/8-11 X 2 1/2	241
		---							5/8-11				-----	---		
3 1/2 <sup>④</sup>	3 1/2	1355-56-56	5.00	6.00	2.25	4.750	2.750	3.44	.66	1.91	-----	3 1/2	4.109	MK 2576	5/8-11 X 3 1/2	241
		---							5/8-11				-----	---		
4 <sup>④</sup>	3	1355-64-48	5.50	6.38	1.50	5.125	3.062	3.20	.66	NA	-----	3	4.609	MK 510	5/8-11 X 2 1/2	245
		---							5/8-11				-----	---		
4 <sup>④</sup>	4	1355-64-64	5.50	6.50	2.50	5.125	3.062	3.94	.66	2.06	-----	4	4.609	MK 2545	5/8-11 X 3 1/2	245
		---							5/8-11				-----	---		

① Order Separately    ② 2500 PSI Max    ③ 2000 PSI Max    ④ 500 PSI Max

MATERIAL : STEEL  
1/07