

Developers and Manufacturers of  
Hydraulic Flanges & Components

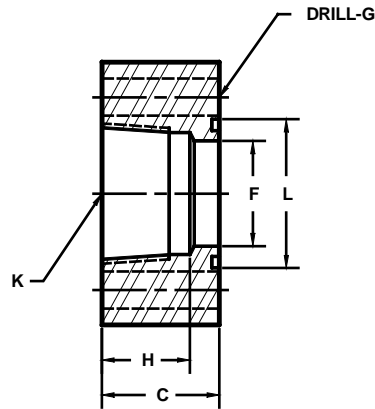
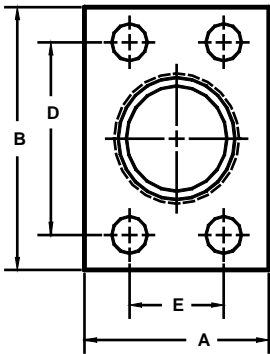
## BSPT THREADED IN-LINE PIPE FLANGES

SAE BOLT PATTERN

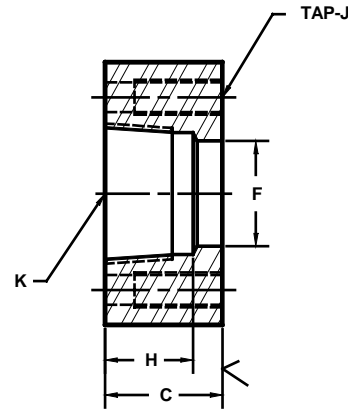
62 SERIES

O-Ring Style

Companion Style  
(Flat Face)



Model 1357



Model 1358

FLANGE SIZE	PIPE SIZE	PART NUMBER	A	B	C	D	E	F	G	H	J	K	L	MOUNTING KIT <sup>①</sup>		
														PART NO.	BOLT SIZE	O-RING
1/2	1/2	1357-08-08	1.75	2.22	1.25	1.594	.718	.50	.34	1.06	----	1/2	1.000	MK 519	5/16-18 X 1 3/4	210
		1358-08-08							---		5/16-18		---	---		
3/4	1/2	1357-12-08	2.00	2.81	1.25	2.000	.937	.70	.41	NA	----	1/2	1.250	MK 520	3/8-16 X 2	214
		1358-12-08							---		3/8-16		---	---		
3/4	3/4	1357-12-12	2.00	2.81	1.25	2.000	.937	.75	.41	1.06	----	3/4	1.250	MK 520	3/8-16 X 2	214
		1358-12-12							---		3/8-16		---	---		
1	3/4	1357-16-12	2.25	3.19	1.50	2.250	1.093	.92	.47	NA	----	3/4	1.562	MK 525	7/16-14 X 2 1/4	219
		1358-16-12							---		7/16-14		---	---		
1	1	1357-16-16	2.25	3.19	1.50	2.250	1.093	1.00	.47	1.25	----	1	1.562	MK 525	7/16-14 X 2 1/4	219
		1358-16-16							---		7/16-14		---	---		
1 1/4	1	1357-20-16	3.00	3.75	1.50	2.625	1.250	1.16	.53	NA	----	1	1.750	MK 526	1/2-13 X 2 1/2	222
		1358-20-16							---		1/2-13		---	---		
1 1/4	1 1/4	1357-20-20	3.00	3.75	1.50	2.625	1.250	1.25	.53	1.31	----	1 1/4	1.750	MK 526	1/2-13 X 2 1/2	222
		1358-20-20							---		1/2-13		---	---		
1 1/2	1 1/4	1357-24-20	3.25	4.50	1.75	3.125	1.437	1.50	.66	NA	----	1 1/4	2.125	MK 527	5/8-11 X 2 3/4	225
		1358-24-20							---		5/8-11		---	---		
1 1/2	1 1/2	1357-24-24	3.25	4.50	1.75	3.125	1.437	1.50	.66	1.31	----	1 1/2	2.125	MK 527	5/8-11 X 2 3/4	225
		1358-24-24							---		5/8-11		---	---		
2	1 1/2	1357-32-24	4.00	5.25	1.75	3.812	1.750	1.74	.78	NA	----	1 1/2	2.500	MK 516	3/4-10 X 3	228
		1358-32-24							---		3/4-10		---	---		
2	2	1357-32-32	4.00	5.25	1.75	3.812	1.750	1.94	.78	1.31	----	2	2.500	MK 516	3/4-10 X 3	228
		1358-32-32							---		3/4-10		---	---		
2 1/2 <sup>②</sup>	2	1357-40-32	5.00	6.88	2.00	4.875	2.312	2.12	.94	NA	----	2	3.000	MK 517	7/9-9 X 3 1/2	232
		1358-40-32							---		7/8-9		---	---		
2 1/2 <sup>②</sup>	2 1/2	1357-40-40	5.00	6.88	2.00	4.875	2.312	2.44	.94	1.59	----	2 1/2	3.000	MK 517	7/8-9 X 3 1/2	232
		1358-40-40							---		7/8-9		---	---		
3 <sup>②</sup>	3	1357-48-48	6.00	8.50	2.50	6.000	2.812	2.94	1.19	1.91	----	3	3.625	MK 718	1 1/8-7 X 4 1/2	237
		1358-48-48							---		1 1/8-7		---	---		

① Order Separately    ② Not included in SAE J518 specifications

MATERIAL : STEEL  
1/07