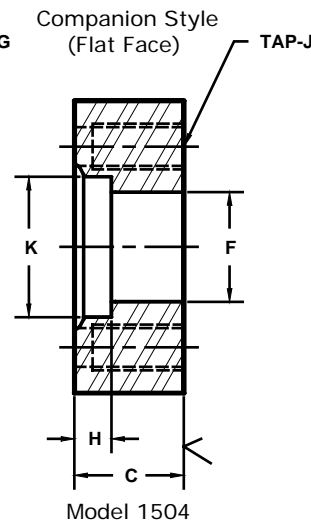
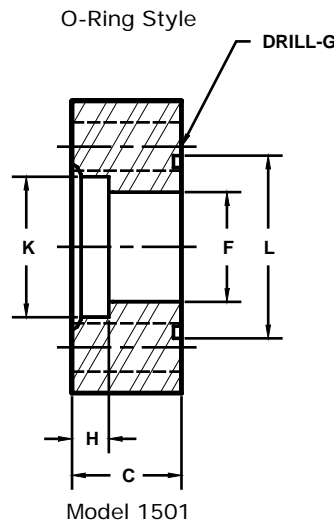
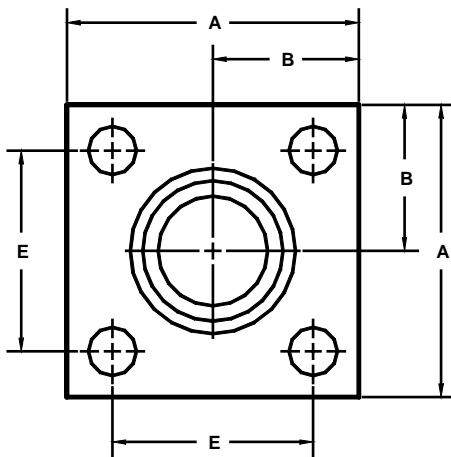


Developers and Manufacturers of Hydraulic Flanges & Components

JIS B 2291, 210K, SOCKET WELD IN-LINE PIPE FLANGES

TYPE SHA & SHB(TAPPED)



FLANGE SIZE	PIPE SIZE	PART NUMBER	A	B	C	E _{mm}	E	F	G _{mm}	H	J _{mm}	K	L	MOUNTING KIT ^①		
														PART NO.	BOLT SIZE	O-RING
15	15	1501-08-08M	2.50	1.25	.87	40.0	1.574	.63	11.0	.43	-----	.874	1.181	MKM 4571	M10 x 40	G25
		1504-08-08M												-----	-----	---
20	15	1501-12-08M	2.75	1.38	.87	45.0	1.772	.63	11.0	.43	-----	.874	1.378	MKM 4572	M10 x 40	G30
		1504-12-08M												-----	-----	---
20	20	1501-12-12M	2.75	1.38	.87	45.0	1.772	.81	11.0	.47	-----	1.091	1.378	MKM 4572	M10 x 40	G30
		1504-12-12M												-----	-----	---
25	20	1501-16-12M	3.25	1.62	1.10	53.0	2.086	.81	13.0	.47	-----	1.091	1.575	MKM 4573	M12 x 50	G35
		1504-16-12M												-----	-----	---
25	25	1501-16-16M	3.25	1.62	1.10	53.0	2.086	.98	13.0	.55	-----	1.358	1.575	MKM 4573	M12 x 50	G35
		1504-16-16M												-----	-----	---
32	25	1501-20-16M	3.50	1.75	1.10	63.0	2.480	.98	13.0	.55	-----	1.358	1.772	MKM 4574	M12 x 50	G40
		1504-20-16M												-----	-----	---
32	32	1501-20-20M	3.50	1.75	1.10	63.0	2.480	1.24	13.0	.63	-----	1.701	1.772	MKM 4574	M12 x 50	G40
		1504-20-20M												-----	-----	---
40	32	1501-24-20M	4.00	2.00	1.38	70.0	2.756	1.24	18.0	.63	-----	1.701	2.165	MKM 4575	M16 x 60	G50
		1504-24-20M												-----	-----	---
40	40	1501-24-24M	4.00	2.00	1.38	70.0	2.756	1.48	18.0	.71	-----	1.933	2.165	MKM 4575	M16 x 60	G50
		1504-24-24M												-----	-----	---
50	40	1501-32-24M	4.50	2.25	1.38	80.0	3.150	1.48	18.0	.71	-----	1.933	2.559	MKM 4576	M16 x 60	G60
		1504-32-24M												-----	-----	---
50	50	1501-32-32M	4.50	2.25	1.38	80.0	3.150	1.87	18.0	.79	-----	2.406	2.559	MKM 4576	M16 x 60	G60
		1504-32-32M												-----	-----	---
65	50	1501-40-32M	5.50	2.75	1.75	100.0	3.937	1.87	22.0	.79	-----	2.406	3.150	MKM 4577	M20 x 75	G75
		1504-40-32M												-----	-----	---
65	65	1501-40-40M	5.50	2.75	1.75	100.0	3.937	2.36	22.0	.86	-----	3.035	3.150	MKM 4577	M20 x 75	G75
		1504-40-40M												-----	-----	---
80	80	1501-48-48M	6.25	3.12	1.75	112.0	4.409	2.80	24.0	.98	-----	3.543	3.543	MKM 4578	M22 x 80	G85
		1504-48-48M												-----	-----	---

① Order Separately

MATERIAL : STEEL

1/07

NOTE: DIMENSIONS ARE IN INCHES UNLESS OTHERWISE NOTED.