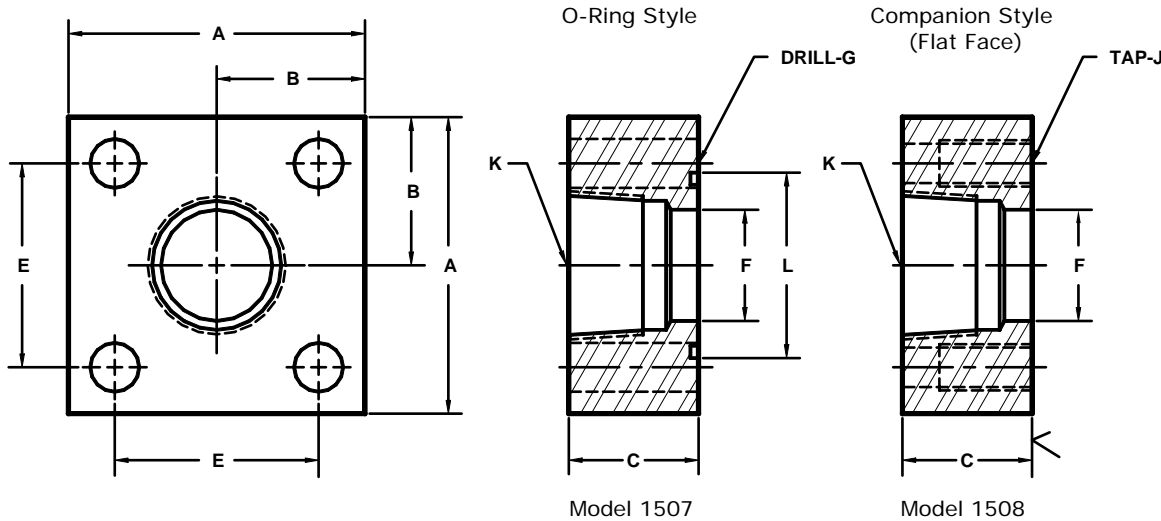


Developers and Manufacturers of Hydraulic Flanges & Components

JIS B 2291, 210K, NPTF THREADED IN-LINE PIPE FLANGES

TYPE SHA & SHB



FLANGE SIZE	PIPE SIZE	PART NUMBER	A	B	C	E _{mm}	E	F	G _{mm}	J _{mm}	K	L	MOUNTING KIT ^①		
													PART NO.	BOLT SIZE	O-RING
15	1/2	1507-08-08M	2.50	1.25	1.25	40.0	1.574	.63	11.0	----	1/2	1.181	MKM 5507	M10 x 50	G25
		---							M10 x 1.5	---		---	---		
20	1/2	1507-12-08M	2.75	1.38	1.25	45.0	1.772	.70	11.0	----	1/2	1.378	MKM 5508	M10 x 50	G30
		---							M10 x 1.5	---		---	---		
20	3/4	1507-12-12M	2.75	1.38	1.25	45.0	1.772	.75	11.0	----	3/4	1.378	MKM 5508	M10 x 50	G30
		---							M10 x 1.5	---		---	---		
25	3/4	1507-16-12M	3.25	1.62	1.50	53.0	2.086	.92	13.0	----	3/4	1.575	MKM 4588	M12 x 60	G35
		---							M12 x 1.75	---		---	---		
25	1	1507-16-16M	3.25	1.62	1.50	53.0	2.086	1.00	13.0	----	1	1.575	MKM 4588	M12 x 60	G35
		---							M12 x 1.75	---		---	---		
32	1	1507-20-16M	3.50	1.75	1.50	63.0	2.480	1.16	13.0	----	1	1.772	MKM 4589	M12 x 60	G40
		---							M12 x 1.75	---		---	---		
32	1 1/4	1507-20-20M	3.50	1.75	1.50	63.0	2.480	1.25	13.0	----	1 1/4	1.772	MKM 4589	M12 x 60	G40
		---							M12 x 1.75	---		---	---		
40	1 1/4	1507-24-20M	4.00	2.00	1.75	70.0	2.756	1.50	18.0	----	1 1/4	2.165	MKM 5509	M16 x 70	G50
		---							M16 x 2	---		---	---		
40	1 1/2	1507-24-24M	4.00	2.00	1.75	70.0	2.756	1.50	18.0	----	1 1/2	2.165	MKM 5509	M16 x 70	G50
		---							M16 x 2	---		---	---		
50	1 1/2	1507-32-24M	4.50	2.25	1.75	80.0	3.150	1.74	18.0	----	1 1/2	2.559	MKM 5521	M16 x 70	G60
		---							M16 x 2	---		---	---		
50	2	1507-32-32M	4.50	2.25	1.75	80.0	3.150	1.94	18.0	----	2	2.559	MKM 5521	M16 x 70	G60
		---							M16 x 2	---		---	---		
65	2	1507-40-32M	5.50	2.75	2.00	100.0	3.937	2.12	22.0	----	2	3.150	MKM 4592	M20 x 80	G75
		---							M20 x 2.5	---		---	---		
65	2 1/2	1507-40-40M	5.50	2.75	2.00	100.0	3.937	2.44	22.0	----	2 1/2	3.150	MKM 4592	M20 x 80	G75
		---							M20 x 2.5	---		---	---		
80	3	1507-48-48M	6.25	3.12	2.25	112.0	4.409	2.80	24.0	----	3	3.543	MKM 4593	M22 x 90	G85
		---							M22 x 2.5	---		---	---		

① Order Separately

MATERIAL : STEEL
1/07

NOTE: DIMENSIONS ARE IN INCHES UNLESS OTHERWISE NOTED.