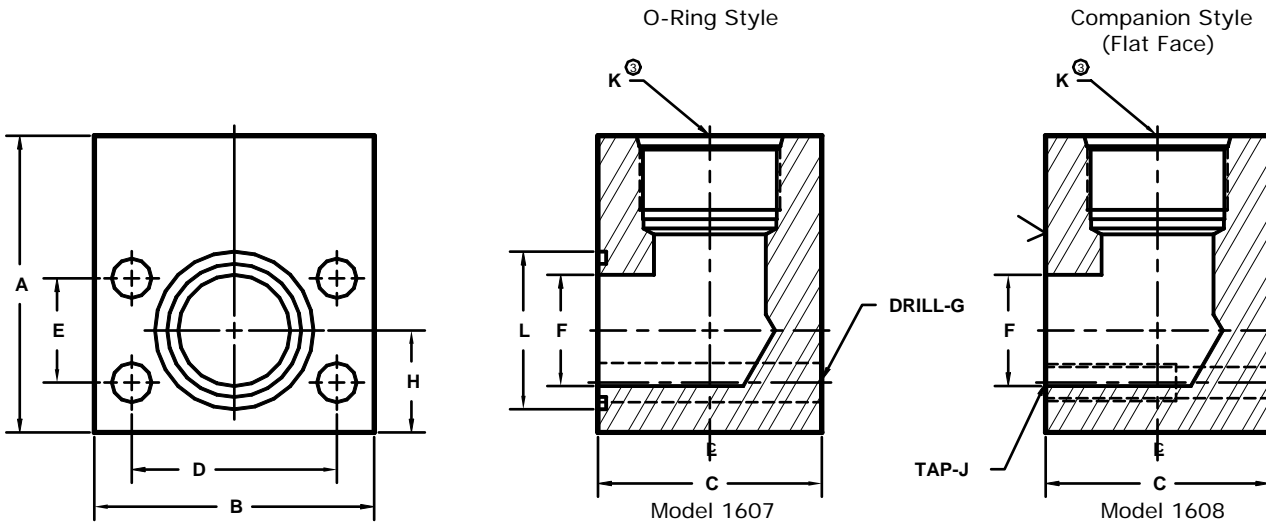


Developers and Manufacturers of Hydraulic Flanges & Components

ISO 6149 THREADED ELBOW FLANGES

SAE BOLT PATTERN

62 SERIES



FLANGE SIZE	PORT SIZE	PART NUMBER	A	B	C	D	E	F	G	H	J	K	L	MOUNTING KIT ^③		
														PART NO.	BOLT SIZE	O-RING
1/2	-6	1607-08-06	2.00	2.22	1.46	1.594	.718	.50	.34	.88	-----	M16 x 1.5	1.000	MK 541	5/16-18 X 2	210
		1608-08-06											-----	-----	---	
1/2	-8	1607-08-08	2.00	2.22	1.46	1.594	.718	.50	.34	.88	-----	M18 x 1.5	1.000	MK 541	5/16-18 X 2	210
		1608-08-08											-----	-----	---	
3/4	-8	1607-12-08	2.50	2.81	1.70	2.000	.937	.75	.41	1.00	-----	M18 x 1.5	1.250	MK 542	3/8-16 X 2 1/2	214
		1608-12-08											-----	-----	---	
3/4	-10	1607-12-10	2.50	2.81	1.70	2.000	.937	.75	.41	1.00	-----	M22 x 1.5	1.250	MK 542	3/8-16 X 2 1/2	214
		1608-12-10											-----	-----	---	
3/4	-12	1607-12-12	2.50	2.81	1.70	2.000	.937	.75	.41	1.00	-----	M27 x 2	1.250	MK 542	3/8-16 X 2 1/2	214
		1608-12-12											-----	-----	---	
1	-12	1607-16-12	3.00	3.19	1.96	2.250	1.093	1.00	.47	1.12	-----	M27 x 2	1.562	MK 551	7/16-14 X 2 3/4	219
		1608-16-12											-----	-----	---	
1	-16	1607-16-16	3.00	3.19	1.96	2.250	1.093	1.00	.47	1.12	-----	M33 x 2	1.562	MK 551	7/16-14 X 2 3/4	219
		1608-16-16											-----	-----	---	
1 1/4	-12	1607-20-12	4.00	3.75	2.40	2.625	1.250	1.25	.53	1.38	-----	M27 x 2	1.750	MK 552	1/2-13 X 3 1/4	222
		1608-20-12											-----	-----	---	
1 1/4	-16	1607-20-16	4.00	3.75	2.40	2.625	1.250	1.25	.53	1.38	-----	M33 x 2	1.750	MK 552	1/2-13 X 3 1/4	222
		1608-20-16											-----	-----	---	
1 1/4	-20	1607-20-20	4.00	3.75	2.40	2.625	1.250	1.25	.53	1.38	-----	M42 x 2	1.750	MK 552	1/2-13 X 3 1/4	222
		1608-20-20											-----	-----	---	
1 1/2	-20	1607-24-20	4.00	4.50	2.96	3.125	1.437	1.50	.66	1.62	-----	M42 x 2	2.125	MK 553	5/8-11 X 4	225
		1608-24-20											-----	-----	---	
1 1/2	-24	1607-24-24	4.00	4.50	2.96	3.125	1.437	1.50	.66	1.62	-----	M48 x 2	2.125	MK 553	5/8-11 X 4	225
		1608-24-24											-----	-----	---	
2	-24	1607-32-24	5.00	5.25	3.46	3.812	1.750	1.94	.78	2.00	-----	M48 x 2	2.500	MK 554	3/4-10 X 4 1/2	228
		1608-32-24											-----	-----	---	
2	-32	1607-32-32	5.00	5.25	3.94	3.812	1.750	1.94	.78	2.00	-----	M60 x 2	2.500	MK 1507	3/4-10 X 5	228
		1608-32-32											-----	-----	---	

① Order Separately

③ The pressure rating of the assembly should not exceed the lower of the flange pad or the fitting. Check the fitting manufacturer for details.

MATERIAL : STEEL
1/07