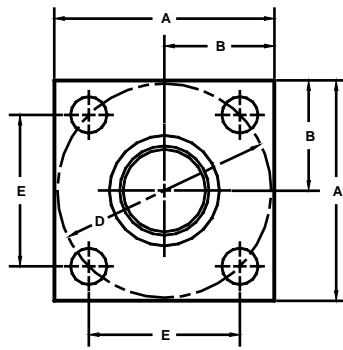


Developers and Manufacturers of Hydraulic Flanges & Components

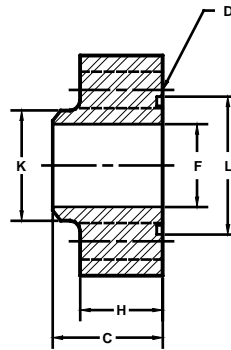
BUTT WELD IN-LINE FLANGES

For Schedule 160 Pipe

ISO 6164			250 BAR SERIES																												
FLANGE SIZE	PIPE SIZE	PART NUMBER	A	B	C	Dmm	E	F	Gmm	H	Jmm	K	L	MOUNTING KIT ^①																	
														PART NO.	BOLT SIZE	O-RING															
13	1/2	1647-08-08M	PLEASE USE THE 400 BAR SERIES FOUND BELOW. THE BLOCK SIZE, BOLT PATTERN AND THE O-RING ARE IDENTICAL IN FLANGE SIZES 13 - 38. IF YOU HAVE ANY QUESTIONS CALL ENGINEERING AT 1-800-521-7918.																												
		1648-08-08M																													
19	3/4	1647-12-12M																													
		1648-12-12M																													
25	1	1647-16-16M																													
		1648-16-16M																													
32	1 1/4	1647-20-20M																													
		1648-20-20M																													
38	1 1/2	1647-24-24M																													
		1648-24-24M																													
51	2	1647-32-32M																4.00	2.00	2.25	98	2.728	1.69	17.5	1.60	-----	2.50	2.500	MKM 3531	M16 x 65	228
		1648-32-32M																-----	M16 x 2	-----	-----	-----									
56	2 1/2	1647-40-40M																4.75	2.38	2.50	118	3.285	2.12	22.0	1.88	-----	3.00	3.000	MKM 5573	M20 x 80	232
		1648-40-40M	-----	M20 x 2.5	-----	-----	-----																								
63	3	1647-48-48M	5.50	2.75	3.00	145	4.037	2.62	22.0	2.28	-----	3.50	3.625	MKM 5558	M20 x 90	237															
		1648-48-48M	-----	M20 x 2.5	-----	-----	-----																								

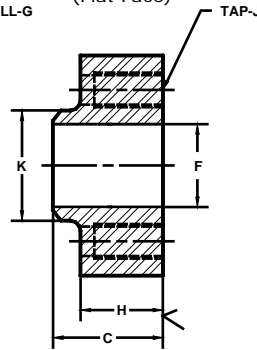


O-Ring Style



Model 1647 / 1651

Companion Style (Flat Face)



Model 1648 / 1652

ISO 6164			400 BAR SERIES													
FLANGE SIZE	PIPE SIZE	PART NUMBER	A	B	C	Dmm	E	F	Gmm	H	Jmm	K	L	MOUNTING KIT ^①		
														PART NO.	BOLT SIZE	O-RING
13	1/2	1651-08-08M	1.75	.88	1.12	42	1.170	.47	9.0	.81	-----	.88	1.000	MKM 512	M8 x 35	210
		1652-08-08M							---		M8 x 1.25		-----	-----		
19	3/4	1651-12-12M	2.00	1.00	1.25	50	1.392	.61	9.0	.90	-----	1.12	1.250	MKM 5559	M8 x 35	214
		1652-12-12M							---		M8 x 1.25		-----	-----		
25	1	1651-16-16M	2.50	1.25	1.50	62	1.726	.81	11.0	1.00	-----	1.38	1.562	MKM 503	M10 x 40	219
		1652-16-16M							---		M10 x 1.5		-----	-----		
32	1 1/4	1651-20-20M	3.00	1.50	1.75	73	2.032	1.16	13.5	1.20	-----	1.75	1.750	MKM 1502	M12 x 50	222
		1652-20-20M							---		M12 x 1.75		-----	-----		
38	1 1/2	1651-24-24M	3.50	1.75	2.00	85	2.366	1.34	17.5	1.44	-----	2.00	2.125	MKM 515	M16 x 60	225
		1652-24-24M							---		M16 x 2		-----	-----		
51	2	1651-32-32M	4.00	2.00	2.25	98	2.728	1.69	17.5	1.60	-----	2.50	2.625	MKM 5560	M16 x 65	331
		1652-32-32M							---		M16 x 2		-----	-----		
56	2 1/2	1651-40-40M	4.75	2.38	2.75	118	3.285	2.12	22.0	1.98	-----	3.00	3.125	MKM 5538	M20 x 80	335
		1652-40-40M							---		M20 x 2.5		-----	-----		
63	3	1651-48-48M	6.00	3.00	3.00	145	4.037	2.62	26.0	2.12	-----	3.50	3.375	MKM 5561	M24 x 90	337
		1652-48-48M							---		M24 x 3		-----	-----		
70	3 1/2	1651-56-56M	6.50	3.25	3.50	160	4.454	2.73	26.0	2.46	-----	4.00	3.750	MKM 5562	M24 x 100	340
		1652-56-56M							---		M24 x 3		-----	-----		
80	4	1651-64-64M	7.00	3.50	4.00	175	4.872	3.15	33.0	2.85	-----	4.50	3.875	MKM 5563	M30 x 120	341
		1652-64-64M							---		M30 x 3.5		-----	-----		

① Order Separately

MATERIAL : STEEL

NOTE: DIMENSIONS ARE IN INCHES UNLESS OTHERWISE NOTED.