

Developers and Manufacturers of Hydraulic Flanges & Components

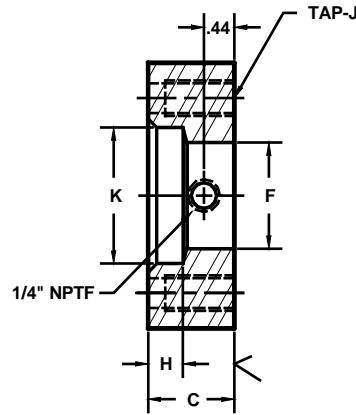
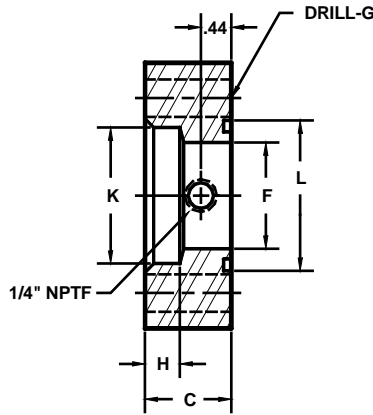
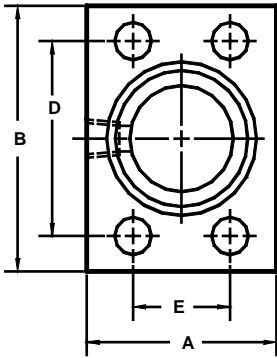
SOCKET WELD IN-LINE PIPE FLANGES W/ 1/4" NPTF GAUGE PORT[Ⓢ]

SAE BOLT PATTERN

61 SERIES

O-Ring Style

Companion Style
(Flat Face)



Model 2101

Model 2102

FLANGE SIZE	PIPE SIZE	PART NUMBER	A	B	C	D	E	F	G	H	J	K	L	MOUNTING KIT [Ⓢ]		
														PART NO.	BOLT SIZE	O-RING
1/2	1/2	2101-08-08	1.50	2.12	1.25	1.500	.688	.50	.34	.38	5/16-18	.860	1.000	MK 519	5/16-18 X 1 3/4	210
		---							---				---			
1/2	3/4	2102-08-12	1.75	2.12	1.75	1.500	.688	.50	---	.50	5/16-18	1.070	---	---	---	---
		---							---				---			
3/4	1/2	2101-12-08	1.75	2.62	1.25	1.875	.875	.50	.41	.38	3/8-16	.860	1.250	MK 520	3/8-16 X 2	214
		---							---				---			
3/4	3/4	2101-12-12	1.75	2.62	1.25	1.875	.875	.75	.41	.50	3/8-16	1.070	1.250	MK 520	3/8-16 X 2	214
		---							---				---			
3/4	1	2102-12-16	2.00	2.62	1.75	1.875	.875	.75	---	.50	3/8-16	1.335	---	---	---	---
		---							---				---			
1	1/2	2101-16-08	2.00	2.82	1.25	2.062	1.031	.50	.41	.38	3/8-16	.860	1.562	MK 1501	3/8-16 X 2	219
		---							---				---			
1	3/4	2101-16-12	2.00	2.82	1.25	2.062	1.031	.75	.41	.50	3/8-16	1.070	1.562	MK 1501	3/8-16 X 2	219
		---							---				---			
1	1	2101-16-16	2.00	2.82	1.25	2.062	1.031	1.00	.41	.50	3/8-16	1.335	1.562	MK 1501	3/8-16 X 2	219
		---							---				---			
1	1 1/4	2102-16-20	2.50	2.82	2.00	2.062	1.031	1.00	---	.50	3/8-16	1.680	---	---	---	---
		---							---				---			
1 1/4	1/2	2101-20-08	2.50	3.19	1.25	2.312	1.188	.50	.47	.38	7/16-14	.860	1.750	MK 1502	7/16-14 X 2	222
		---							---				---			
1 1/4	3/4	2101-20-12	2.50	3.19	1.25	2.312	1.188	.75	.47	.50	7/16-14	1.070	1.750	MK 1502	7/16-14 X 2	222
		---							---				---			
1 1/4	1	2101-20-16	2.50	3.19	1.25	2.312	1.188	1.00	.47	.50	7/16-14	1.335	1.750	MK 1502	7/16-14 X 2	222
		---							---				---			
1 1/4	1 1/4	2101-20-20	2.50	3.19	1.25	2.312	1.188	1.25	.47	.50	7/16-14	1.680	1.750	MK 1502	7/16-14 X 2	222
		---							---				---			
1 1/4	1 1/2	2102-20-24	3.00	3.19	2.50	2.312	1.188	1.25	---	.50	7/16-14	1.920	---	---	---	---
		---							---				---			

Ⓢ Order Separately Ⓢ Also available with 7/16-20 (-4) SAE Gauge Port

MATERIAL : STEEL
1/07

Developers and Manufacturers of Hydraulic Flanges & Components

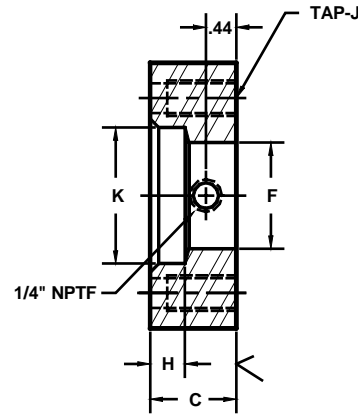
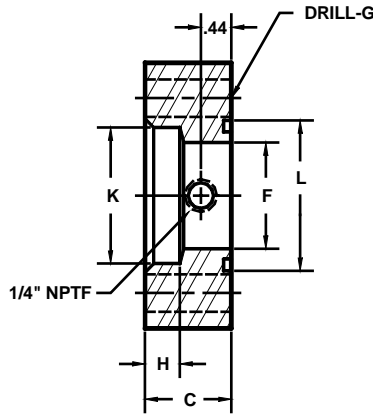
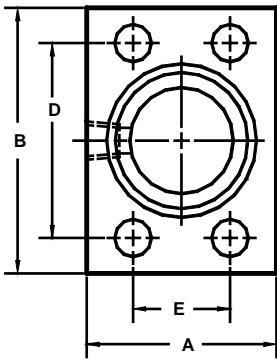
SOCKET WELD IN-LINE PIPE FLANGES W/ 1/4" NPTF GAUGE PORT[Ⓢ]

SAE BOLT PATTERN

61 SERIES

O-Ring Style

Companion Style
(Flat Face)



Model 2101

Model 2102

FLANGE SIZE	PIPE SIZE	PART NUMBER	A	B	C	D	E	F	G	H	J	K	L	MOUNTING KIT [Ⓢ]		
														PART NO.	BOLT SIZE	O-RING
1 1/2	3/4	2101-24-12	2.75	3.75	1.25	2.750	1.406	.75	.53	.50	----	1.070	2.125	MK 505	1/2-13 X 2	225
		2102-24-12							---		1/2-13		----	---		
1 1/2	1	2101-24-16	2.75	3.75	1.25	2.750	1.406	1.00	.53	.50	----	1.335	2.125	MK 505	1/2-13 X 2	225
		2102-24-16							---		1/2-13		----	---		
1 1/2	1 1/4	2101-24-20	2.75	3.75	1.25	2.750	1.406	1.25	.53	.50	----	1.680	2.125	MK 505	1/2-13 X 2	225
		2102-24-20							---		1/2-13		----	---		
1 1/2	1 1/2	2101-24-24	2.75	3.75	1.25	2.750	1.406	1.50	.53	.50	----	1.920	2.125	MK 505	1/2-13 X 2	225
		2102-24-24							---		1/2-13		----	---		
1 1/2	2	2101-24-32	3.50	3.75	2.25	2.750	1.406	1.50	---	.50	----	2.411	---	---	---	---
		2102-24-32							---		1/2-13		----	---		
2	1	2101-32-16	3.25	4.00	1.50	3.062	1.688	1.00	.53	.50	----	1.335	2.500	MK 506	1/2-13 X 2 1/4	228
		2102-32-16							---		1/2-13		----	---		
2	1 1/4	2101-32-20	3.25	4.00	1.50	3.062	1.688	1.25	.53	.50	----	1.680	2.500	MK 506	1/2-13 X 2 1/4	228
		2102-32-20							---		1/2-13		----	---		
2	1 1/2	2101-32-24	3.25	4.00	1.50	3.062	1.688	1.50	.53	.50	----	1.920	2.500	MK 506	1/2-13 X 2 1/4	228
		2102-32-24							---		1/2-13		----	---		
2	2	2101-32-32	3.25	4.00	1.50	3.062	1.688	1.94	.53	.62	----	2.411	2.500	MK 506	1/2-13 X 2 1/4	228
		2102-32-32							---		1/2-13		----	---		
2	2 1/2	2101-32-40	4.00	4.00	2.50	3.062	1.688	1.94	---	.50	----	2.911	---	---	---	---
		2102-32-40							---		1/2-13		----	---		
2 1/2 [Ⓢ]	1 1/2	2101-40-24	4.00	4.50	1.75	3.500	2.000	1.50	.53	.50	----	1.920	3.000	MK 507	1/2-13 X 2 1/2	232
		2102-40-24							---		1/2-13		----	---		
2 1/2 [Ⓢ]	2	2101-40-32	4.00	4.50	1.75	3.500	2.000	1.94	.53	.62	----	2.411	3.000	MK 507	1/2-13 X 2 1/2	232
		2102-40-32							---		1/2-13		----	---		
2 1/2 [Ⓢ]	2 1/2	2101-40-40	4.00	4.50	1.75	3.500	2.000	2.44	.53	.75	----	2.911	3.000	MK 507	1/2-13 X 2 1/2	232
		2102-40-40							---		1/2-13		----	---		
2 1/2 [Ⓢ]	3	2101-40-48	5.00	5.00	3.00	3.500	2.000	2.44	---	.75	----	3.540	---	---	---	---
		2102-40-48							---		1/2-13		----	---		

① Order Separately

② 2500 PSI Max

③ Also available with 7/16-20 (-4) SAE Gauge Port

MATERIAL : STEEL

1/07

Developers and Manufacturers of Hydraulic Flanges & Components

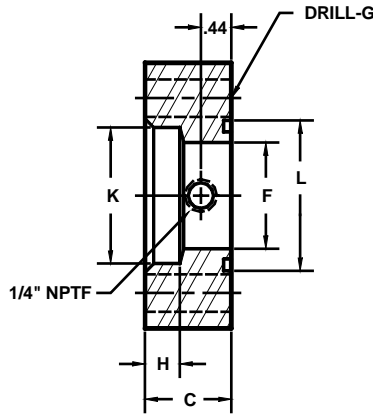
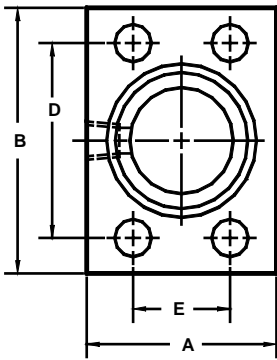
SOCKET WELD IN-LINE PIPE FLANGES W/ 1/4" NPTF GAUGE PORT^⑤

SAE BOLT PATTERN

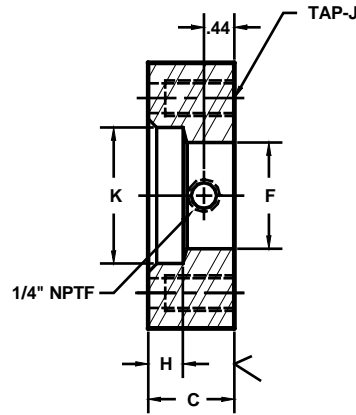
61 SERIES

O-Ring Style

Companion Style
(Flat Face)



Model 2101



Model 2102

FLANGE SIZE	PIPE SIZE	PART NUMBER	A	B	C	D	E	F	G	H	J	K	L	MOUNTING KIT ^①		
														PART NO.	BOLT SIZE	O-RING
3 ^③	2	2101-48-32	4.50	5.31	2.00	4.188	2.438	1.94	.66	.62	---	2.411	3.625	MK 508	5/8-11 X 3	237
		---							5/8-11				---	---	---	
3 ^③	2 1/2	2101-48-40	4.50	5.31	2.00	4.188	2.438	2.44	.66	.75	---	2.911	3.625	MK 508	5/8-11 X 3	237
		---							5/8-11				---	---	---	
3 ^③	3	2101-48-48	4.50	5.31	2.00	4.188	2.438	2.94	.66	.75	---	3.540	3.625	MK 508	5/8-11 X 3	237
		---							5/8-11				---	---	---	
3 ^③	3 1/2	---	5.00	5.50	3.00	4.188	2.438	2.94	---	.75	---	4.045	---	---	---	---
		2102-48-56							---				5/8-11	---	---	---
3 1/2 ^④	2 1/2	2101-56-40	5.00	6.00	1.50	4.750	2.750	2.44	.66	.75	---	2.911	4.109	MK 509	5/8-11 X 2 1/2	241
		2102-56-40							---				5/8-11	---	---	---
3 1/2 ^④	3	2101-56-48	5.00	6.00	1.50	4.750	2.750	2.94	.66	.75	---	3.540	4.109	MK 509	5/8-11 X 2 1/2	241
		2102-56-48							---				5/8-11	---	---	---
3 1/2 ^④	3 1/2	2101-56-56	5.00	6.00	1.50	4.750	2.750	3.44	.66	.75	---	4.045	4.109	MK 509	5/8-11 X 2 1/2	241
		2102-56-56							---				5/8-11	---	---	---
3 1/2 ^④	4	---	6.00	6.00	3.00	4.750	2.750	3.44	---	.62	---	4.550	---	---	---	---
		2102-56-64							---				5/8-11	---	---	---
4 ^④	3	2101-64-48	5.50	6.38	1.50	5.125	3.062	2.94	.66	.75	---	3.540	4.609	MK 510	5/8-11 X 2 1/2	245
		2102-64-48							---				5/8-11	---	---	---
4 ^④	3 1/2	2101-64-56	5.50	6.38	1.50	5.125	3.062	3.44	.66	.75	---	4.045	4.609	MK 510	5/8-11 X 2 1/2	245
		2102-64-56							---				5/8-11	---	---	---
4 ^④	4	2101-64-64	5.50	6.38	1.50	5.125	3.062	3.94	.66	.75	---	4.550	4.609	MK 510	5/8-11 X 2 1/2	245
		2102-64-64							---				5/8-11	---	---	---
4 ^④	5	---	7.00	7.00	3.00	5.125	3.062	3.94	---	.75	---	5.635	---	---	---	---
		2102-64-80							---				5/8-11	---	---	---
5 ^④	4	2101-80-64	7.00	7.25	2.00	6.000	3.625	3.94	.66	.75	---	4.550	5.609	MK 511	5/8-11 X 3	253
		2102-80-64							---				5/8-11	---	---	---
5 ^④	5	2101-80-80	7.00	7.25	2.00	6.000	3.625	4.94	.66	.75	---	5.635	5.609	MK 511	5/8-11 X 3	253
		2102-80-80							---				5/8-11	---	---	---

① Order Separately ③ 2000 PSI Max ④ 500 PSI Max ⑤ Also available with 7/16-20 (-4) SAE Gauge Port. MATERIAL : STEEL
1/07