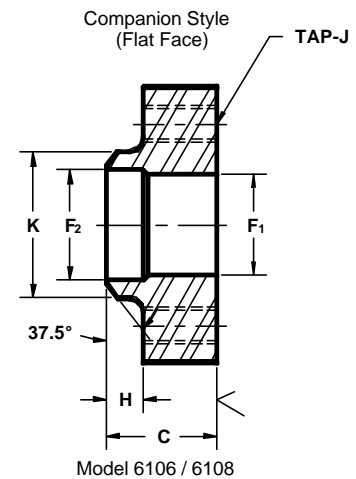
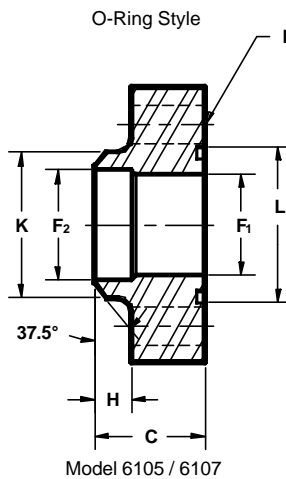
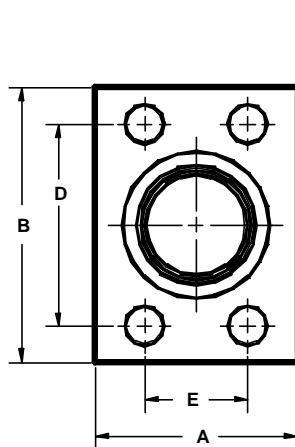


Developers and Manufacturers of  
Hydraulic Flanges & Components

## BUTT WELD IN-LINE FLANGES

For Schedule 40 Pipe

SAE BOLT PATTERN														61 SERIES				WT
FLANGE SIZE	PIPE SIZE	PART NUMBER	A	B	C	D	E	F <sub>1</sub>	F <sub>2</sub>	G	H	J	K	L	MOUNTING KIT <sup>①</sup>			
															PART NO.	BOLT SIZE	O-RING	
1/2	1/2	6105-08-08D	1.50	2.12	1.25	1.500	.688	.53	.62	.34	.38	5/16-18	.88	1.000	MK 512	5/16-18 X 1 1/2	210	1.0
		---								---				---				
3/4	3/4	6105-12-12D	1.75	2.62	1.25	1.875	.875	.75	.82	.41	.38	3/8-16	1.12	1.250	MK 1525	3/8-16 X 1 1/2	214	1.2
		---								---				---				
1	1	6105-16-16D	2.00	2.82	1.25	2.062	1.031	.94	1.04	.41	.38	3/8-16	1.38	1.562	MK 1542	3/8-16 X 1 1/2	219	1.5
		---								---				---				
1 1/4	1 1/4	6105-20-20D	2.50	3.19	1.25	2.312	1.188	1.25	1.38	.47	.38	7/16-14	1.75	1.750	MK 1527	7/16-14 X 1 1/2	222	1.7
		---								---				---				
1 1/2	1 1/2	6105-24-24D	2.75	3.75	1.50	2.750	1.406	1.50	1.61	.53	.50	1/2-13	2.00	2.125	MK 1547	1/2-13 X 1 3/4	225	2.5
		---								---				---				
2	2	6105-32-32D	3.25	4.00	1.50	3.062	1.688	1.94	2.06	.53	.50	1/2-13	2.50	2.500	MK 582	1/2-13 X 1 3/4	228	3.0
		---								---				---				
2 1/2 <sup>②</sup>	2 1/2	6105-40-40D	4.00	4.50	1.75	3.500	2.000	2.32	2.47	.53	.50	1/2-13	3.00	3.000	MK 561	1/2-13 X 2	232	5.0
		---								---				---				
3 <sup>③</sup>	3	6105-48-48D	4.50	5.31	2.00	4.188	2.438	2.90	3.06	.66	.50	5/8-11	3.50	3.625	MK 585	5/8-11 X 2 1/2	237	7.2
		---								---				---				
3 1/2 <sup>④</sup>	3 1/2	6105-56-56D	5.00	6.00	1.50	4.750	2.750	3.36	3.54	.66	.50	5/8-11	4.00	4.109	MK 1571	5/8-11 X 2	241	6.2
		---								---				---				
4 <sup>④</sup>	4	6105-64-64D	5.50	6.38	1.50	5.125	3.062	3.83	4.02	.66	.50	5/8-11	4.50	4.609	MK 1572	5/8-11 X 2	245	7.2
		---								---				---				
5 <sup>④</sup>	5	6105-80-80D	7.00	7.25	2.00	6.000	3.625	4.81	5.04	.66	.50	5/8-11	5.62	5.609	MK 1573	5/8-11 X 2 1/2	253	15.0
		---								---				---				



SAE BOLT PATTERN														62 SERIES				WT
FLANGE SIZE	PIPE SIZE	PART NUMBER	A	B	C	D	E	F <sub>1</sub>	F <sub>2</sub>	G	H	J	K	L	MOUNTING KIT <sup>①</sup>			
															PART NO.	BOLT SIZE	O-RING	
1/2	1/2	6107-08-08D	1.75	2.22	1.25	1.594	.718	.53	.62	.34	.38	5/16-18	.88	1.000	MK 512	5/16-18 X 1 1/2	210	.8
		---								---				---				
3/4	3/4	6107-12-12D	2.00	2.81	1.25	2.000	.937	.75	.82	.41	.38	3/8-16	1.12	1.250	MK 1525	3/8-16 X 1 1/2	214	1.2
		---								---				---				
1	1	6107-16-16D	2.25	3.19	1.25	2.250	1.093	.94	1.04	.47	.38	7/16-14	1.38	1.562	MK 513	7/16-14 X 1 3/4	219	1.5
		---								---				---				
1 1/4	1 1/4	6107-20-20D	2.75	3.75	1.25	2.625	1.250	1.25	1.38	.53	.38	1/2-13	1.75	1.750	MK 529	1/2-13 X 1 3/4	222	2.7
		---								---				---				
1 1/2	1 1/2	6107-24-24D	3.25	4.50	1.50	3.125	1.437	1.50	1.61	.66	.50	5/8-11	2.00	2.125	MK 562	5/8-11 X 2	225	4.7
		---								---				---				
2	2	6107-32-32D	4.00	5.25	1.75	3.812	1.750	1.94	2.06	.78	.50	3/4-10	2.50	2.500	MK 1548	3/4-10 X 2 1/2	228	7.5
		---								---				---				
2 1/2 <sup>⑤</sup>	2 1/2	6107-40-40D	5.00	6.88	2.00	4.875	2.312	2.32	2.47	.94	.50	7/8-9	3.00	3.000	MK 1575	7/8-9 X 2 3/4	232	14.7
		---								---				---				
3 <sup>⑤</sup>	3	6107-48-48D	6.00	8.50	2.50	6.000	2.812	2.90	3.06	1.19	.50	1 1/8-7	3.50	3.625	MK 1776	1 1/8-7 X 4	237	28.0
		---								---				---				

① Order Separately ② 2500 PSI Max ③ 2000 PSI Max ④ 500 PSI Max ⑤ Not included in SAE J518 specifications

MATERIAL: 316L STAINLESS STEEL  
10/00