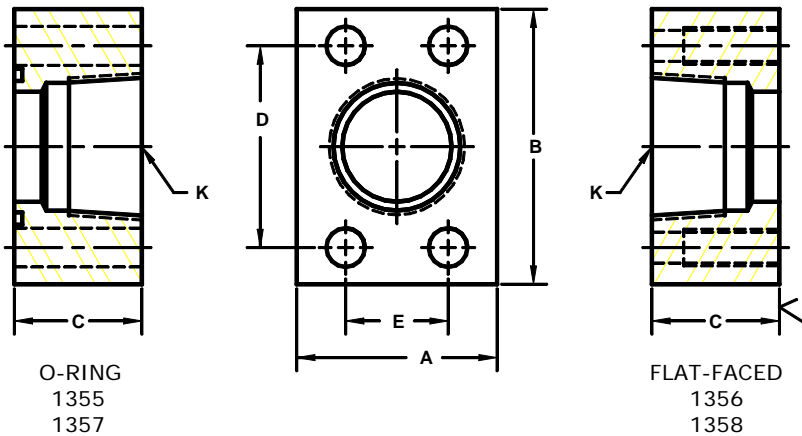


Developers and Manufacturers of Hydraulic Flanges & Components

BSPT TAPER THREADED IN-LINE FLANGES

SAE BOLT PATTERN									61 SERIES			
FLANGE SIZE	PORT SIZE	PART NUMBER	A	B	C	D	E	K	MOUNTING KIT ^①			WT
									PART NO.	BOLT SIZE	O-RING	
1/2	-8	1355-08-08	1.50	2.12	1.25	1.500	.688	1/2-14	MK 519	5/16-18 X 1 3/4	210	.8
		1356-08-08							-----	-----	---	
3/4	-12	1355-12-12	1.75	2.62	1.50	1.875	.875	3/4-14	MK 520	3/8-16 X 2	214	1.2
		1356-12-12							-----	-----	---	
1	-16	1355-16-16	2.00	2.82	1.50	2.062	1.031	1-11	MK 521	3/8-16 X 2 1/4	219	1.7
		1356-16-16							-----	-----	---	
1 1/4	-20	1355-20-20	2.50	3.19	1.50	2.312	1.188	1 1/4-11	MK 522	7/16-14 X 2 1/4	222	2.3
		1356-20-20							-----	-----	---	
1 1/2	-24	1355-24-24	2.75	3.75	1.75	2.750	1.406	1 1/2-11	MK 523	1/2-13 X 2 1/2	225	3.6
		1356-24-24							-----	-----	---	
2	-32	1355-32-32	3.25	4.00	1.75	3.062	1.688	2-11	MK 524	1/2-13 X 2 1/2	228	4.2
		1356-32-32							-----	-----	---	



SAE BOLT PATTERN									62 SERIES			
FLANGE SIZE	PORT SIZE	PART NUMBER	A	B	C	D	E	K	MOUNTING KIT ^①			WT
									PART NO.	BOLT SIZE	O-RING	
1/2	-8	1357-08-08	1.75	2.22	1.25	1.594	.718	1/2-14	MK 519	5/16-18 X 1 3/4	210	1.1
		1358-08-08							-----	-----	---	
3/4	-12	1357-12-12	2.00	2.81	1.50	2.000	.937	3/4-14	MK 520	3/8-16 X 2	214	1.5
		1358-12-12							-----	-----	---	
1	-16	1357-16-16	2.25	3.19	1.50	2.250	1.093	1-11	MK 525	7/16-14 X 2 1/4	219	2.3
		1358-16-16							-----	-----	---	
1 1/4	-20	1357-20-20	3.00	3.75	1.50	2.625	1.250	1 1/4-11	MK 526	1/2-13 X 2 1/2	222	3.7
		1358-20-20							-----	-----	---	
1 1/2	-24	1357-24-24	3.25	4.50	1.75	3.125	1.437	1 1/2-11	MK 527	5/8-11 X 2 3/4	225	5.6
		1358-24-24							-----	-----	---	
2	-32	1357-32-32	4.00	5.25	1.75	3.812	1.750	2-11	MK 516	3/4-10 X 3	228	7.8
		1358-32-32							-----	-----	---	

1. Order Separately.

©Copyright March 2006