



MAIN[®]

ONLINE CATALOG PAGE

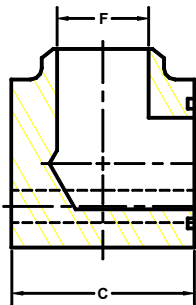
manufacturing products

Developers and Manufacturers of Hydraulic Flanges & Components

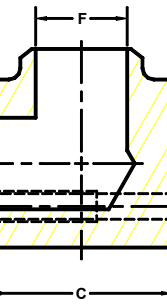
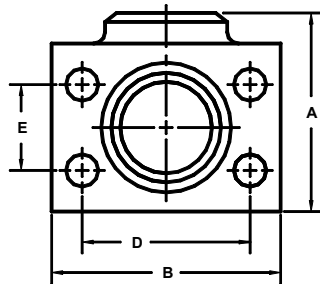
BUTT WELD ELBOW PIPE FLANGES

For Schedule 40 Pipe

SAE BOLT PATTERN		61 SERIES										
FLANGE SIZE	PIPE SIZE	PART NUMBER	A	B	C	D	E	F	MOUNTING KIT ^①			WT
									PART NO.	BOLT SIZE	O-RING	
1/2	1/2	1133-08-08	2.00	2.12	1.44	1.500	.688	.62	MK 541	5/16-18 X 2	210	1.3
		1134-08-08										
3/4	3/4	1133-12-12	2.25	2.62	1.70	1.875	.875	.82	MK 542	3/8-16 X 2 1/2	214	2.0
		1134-12-12										
1	1	1133-16-16	2.50	2.82	1.94	2.062	1.031	1.04	MK 543	3/8-16 X 2 3/4	219	2.8
		1134-16-16										
1 1/4	1 1/4	1133-20-20	3.00	3.19	2.40	2.312	1.188	1.38	MK 578	7/16-14 X 3 1/4	222	4.8
		1134-20-20										
1 1/2	1 1/2	1133-24-24	3.25	3.75	2.90	2.750	1.406	1.61	MK 545	1/2-13 X 4	225	6.8
		1134-24-24										
2	2	1133-32-32	3.75	4.00	3.40	3.062	1.688	2.06	MK 546	1/2-13 X 4 1/2	228	9.5
		1134-32-32										
2 1/2 ^②	2 1/2	1133-40-40	4.50	4.50	3.96	3.500	2.000	2.47	MK 547	1/2-13 X 5	232	15.4
		1134-40-40										
3 ^③	3	1133-48-48	5.00	5.31	4.96	4.188	2.438	3.06	MK 548	5/8-11 X 6	237	24.2
		1134-48-48										
3 1/2 ^④	3 1/2	1133-56-56	5.50	6.00	5.40	4.750	2.750	3.54	MK 549	5/8-11 X 6 1/2	241	37.0
		1134-56-56										
4 ^④	4	1133-64-64	6.00	6.38	5.96	5.125	3.062	4.02	MK 550	5/8-11 X 7	245	48.0
		1134-64-64										
5 ^④	5	1133-80-80	7.50	7.25	6.90	6.000	3.625	5.04	MK 1569	5/8-11 X 8	253	61.4
		1134-80-80										



O-RING
1133
1135



FLAT-FACED
1134
1136

SAE BOLT PATTERN		62 SERIES										
FLANGE SIZE	PIPE SIZE	PART NUMBER	A	B	C	D	E	F	MOUNTING KIT ^①			WT
									PART NO.	BOLT SIZE	O-RING	
1/2	1/2	1135-08-08	2.25	2.22	1.46	1.594	.718	.62	MK 541	5/16-18 X 2	210	1.6
		1136-08-08										
3/4	3/4	1135-12-12	2.50	2.81	1.70	2.000	.937	.82	MK 542	3/8-16 X 2 1/2	214	2.5
		1136-12-12										
1	1	1135-16-16	2.75	3.19	2.21	2.250	1.093	1.04	MK 2533	7/16-14 X 3	219	4.1
		1136-16-16										
1 1/4	1 1/4	1135-20-20	3.25	3.75	2.44	2.625	1.250	1.38	MK 552	1/2-13 X 3 1/4	222	6.4
		1136-20-20										
1 1/2	1 1/2	1135-24-24	3.75	4.50	2.96	3.125	1.437	1.61	MK 553	5/8-11 X 4	225	10.2
		1136-24-24										
2	2	1135-32-32	4.50	5.25	3.46	3.812	1.750	2.06	MK 554	3/4-10 X 4 1/2	228	17.0
		1136-32-32										
2 1/2 ^⑤	2 1/2	1135-40-40	5.50	6.88	4.50	4.875	2.312	2.47	MK 2557	7/8-9 X 6	232	33.2
		1136-40-40										
3 ^⑤	3	1135-48-48	6.50	8.50	5.00	6.000	2.812	3.06	MK 756	1 1/8-7 X 7	237	48.0
		1136-48-48										

1. Order Separately. 2. 2500 PSI Max. 3. 2000 PSI Max. 4. 500 PSI Max. 5. Not included in SAE J518

©Copyright April 2008