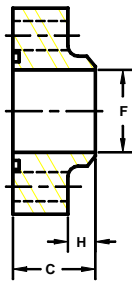


Developers and Manufacturers of Hydraulic Flanges & Components

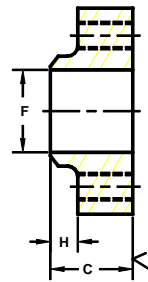
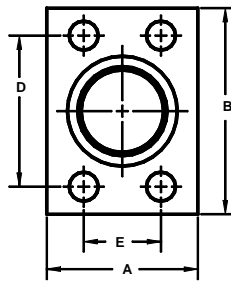
BUTT WELD IN-LINE PIPE FLANGES

For Schedule 40 Pipe

SAE BOLT PATTERN										61 SERIES			WT
FLANGE SIZE	PIPE SIZE	PART NUMBER	A	B	C	D	E	F	H	MOUNTING KIT ^①			
										PART NO.	BOLT SIZE	O-RING	
1/2	1/2	1105-08-08	1.50	2.12	1.25	1.500	.688	.62	.38	MK 512	5/16-18 X 1 1/2	210	.7
		1106-08-08								-----	---		
3/4	3/4	1105-12-12	1.75	2.62	1.25	1.875	.875	.82	.38	MK 1525	3/8-16 X 1 1/2	214	1.0
		1106-12-12								-----	---		
1	1	1105-16-16	2.00	2.82	1.25	2.062	1.031	1.04	.38	MK 1542	3/8-16 X 1 1/2	219	1.2
		1106-16-16								-----	---		
1 1/4	1 1/4	1105-20-20	2.50	3.19	1.25	2.312	1.188	1.38	.38	MK 1527	7/16-14 X 1 1/2	222	1.6
		1106-20-20								-----	---		
1 1/2	1 1/2	1105-24-24	2.75	3.75	1.50	2.750	1.406	1.61	.50	MK 1547	1/2-13 X 1 3/4	225	2.3
		1106-24-24								-----	---		
2	2	1105-32-32	3.25	4.00	1.50	3.062	1.688	2.06	.50	MK 582	1/2-13 X 1 3/4	228	2.8
		1106-32-32								-----	---		
2 1/2 ^②	2 1/2	1105-40-40	4.00	4.50	1.75	3.500	2.000	2.47	.50	MK 561	1/2-13 X 2	232	4.8
		1106-40-40								-----	---		
3 ^③	3	1105-48-48	4.50	5.31	2.00	4.188	2.438	3.06	.50	MK 585	5/8-11 X 2 1/2	237	7.2
		1106-48-48								-----	---		
3 1/2 ^④	3 1/2	1105-56-56	5.00	6.00	1.50	4.750	2.750	3.54	.50	MK 1571	5/8-11 X 2	241	5.9
		1106-56-56								-----	---		
4 ^④	4	1105-64-64	5.50	6.38	1.50	5.125	3.062	4.02	.50	MK 1572	5/8-11 X 2	245	6.7
		1106-64-64								-----	---		
5 ^④	5	1105-80-80	7.00	7.25	2.00	6.000	3.625	5.04	.50	MK 1573	5/8-11 X 2 1/2	253	14.3
		1106-80-80								-----	---		



O-RING
1105
1107



FLAT-FACED
1106
1108

SAE BOLT PATTERN										62 SERIES			WT
FLANGE SIZE	PIPE SIZE	PART NUMBER	A	B	C	D	E	F	H	MOUNTING KIT ^①			
										PART NO.	BOLT SIZE	O-RING	
1/2	1/2	1107-08-08	1.75	2.22	1.25	1.594	.718	.62	.38	MK 512	5/16-18 X 1 1/2	210	.8
		1108-08-08								-----	---		
3/4	3/4	1107-12-12	2.00	2.81	1.25	2.000	.937	.82	.38	MK 1525	3/8-16 X 1 1/2	214	1.3
		1108-12-12								-----	---		
1	1	1107-16-16	2.25	3.19	1.25	2.250	1.093	1.04	.38	MK 513	7/16-14 X 1 3/4	219	1.5
		1108-16-16								-----	---		
1 1/4	1 1/4	1107-20-20	2.75	3.75	1.25	2.625	1.250	1.38	.38	MK 529	1/2-13 X 1 3/4	222	2.1
		1108-20-20								-----	---		
1 1/2	1 1/2	1107-24-24	3.25	4.50	1.50	3.125	1.437	1.61	.50	MK 562	5/8-11 X 2	225	3.3
		1108-24-24								-----	---		
2	2	1107-32-32	4.00	5.25	1.75	3.812	1.750	2.06	.50	MK 1548	3/4-10 X 2 1/2	228	5.9
		1108-32-32								-----	---		
2 1/2 ^⑤	2 1/2	1107-40-40	5.00	6.88	2.00	4.875	2.312	2.47	.50	MK 1575	7/8-9 X 2 3/4	232	12.0
		1108-40-40								-----	---		
3 ^⑤	3	1107-48-48	6.00	8.50	2.50	6.000	2.812	3.06	.50	MK 1776	1 1/8-7 X 4	237	23.3
		1108-48-48								-----	---		

1. Order Separately. 2. 2500 PSI Max. 3. 2000 PSI Max. 4. 500 PSI Max. 5. Not included in SAE J518

©Copyright March 2006