



MAIN[®]

ONLINE CATALOG PAGE

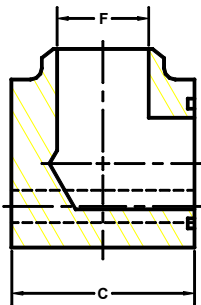
manufacturing products

Developers and Manufacturers of Hydraulic Flanges & Components

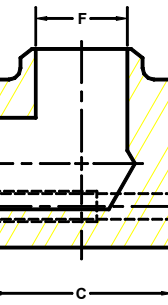
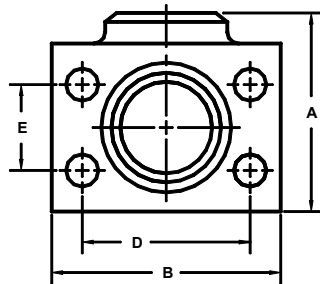
BUTT WELD ELBOW PIPE FLANGES

For Schedule XXS Pipe

SAE BOLT PATTERN									61 SERIES			
FLANGE SIZE	PIPE SIZE	PART NUMBER	A	B	C	D	E	F	MOUNTING KIT ^①			WT
									PART NO.	BOLT SIZE	O-RING	
1/2	1/2	1145-08-08	2.00	2.12	1.44	1.500	.688	.25	MK 541	5/16-18 X 2	210	1.3
		1146-08-08										
3/4	3/4	1145-12-12	2.25	2.62	1.70	1.875	.875	.44	MK 542	3/8-16 X 2 1/2	214	2.0
		1146-12-12										
1	1	1145-16-16	2.50	2.82	1.94	2.062	1.031	.60	MK 543	3/8-16 X 2 3/4	219	2.8
		1146-16-16										
1 1/4	1 1/4	1145-20-20	3.00	3.19	2.40	2.312	1.188	.89	MK 578	7/16-14 X 3 1/4	222	4.8
		1146-20-20										
1 1/2	1 1/2	1145-24-24	3.25	3.75	2.90	2.750	1.406	1.10	MK 545	1/2-13 X 4	225	6.8
		1146-24-24										
2	2	1145-32-32	4.00	4.00	3.40	3.062	1.688	1.50	MK 546	1/2-13 X 4 1/2	228	9.5
		1146-32-32										
2 1/2 ^②	2 1/2	1145-40-40	4.75	4.50	3.96	3.500	2.000	1.77	MK 547	1/2-13 X 5	232	15.4
		1146-40-40										
3 ^③	3	1145-48-48	5.25	5.31	4.96	4.188	2.438	2.30	MK 548	5/8-11 X 6	237	24.2
		1146-48-48										
3 1/2 ^④	3 1/2	1145-56-56	5.75	6.00	5.40	4.750	2.750	2.73	MK 549	5/8-11 X 6 1/2	241	37.0
		1146-56-56										
4 ^④	4	1145-64-64	6.25	6.38	5.96	5.125	3.062	3.15	MK 550	5/8-11 X 7	245	48.0
		1146-64-64										
5 ^④	5	1145-80-80	8.00	7.25	6.90	6.000	3.625	4.06	MK 1569	5/8-11 X 8	253	61.4
		1146-80-80										



O-RING
1145
1147



FLAT-FACED
1146
1148

SAE BOLT PATTERN									62 SERIES			
FLANGE SIZE	PIPE SIZE	PART NUMBER	A	B	C	D	E	F	MOUNTING KIT ^①			WT
									PART NO.	BOLT SIZE	O-RING	
1/2	1/2	1147-08-08	2.25	2.22	1.46	1.594	.718	.25	MK 541	5/16-18 X 2	210	1.6
		1148-08-08										
3/4	3/4	1147-12-12	2.50	2.81	1.70	2.000	.937	.44	MK 542	3/8-16 X 2 1/2	214	2.5
		1148-12-12										
1	1	1147-16-16	2.75	3.19	2.21	2.250	1.093	.60	MK 2533	7/16-14 X 3	219	4.1
		1148-16-16										
1 1/4	1 1/4	1147-20-20	3.25	3.75	2.44	2.625	1.250	.89	MK 552	1/2-13 X 3 1/4	222	6.4
		1148-20-20										
1 1/2	1 1/2	1147-24-24	3.75	4.50	2.96	3.125	1.437	1.10	MK 553	5/8-11 X 4	225	10.2
		1148-24-24										
2	2	1147-32-32	4.75	5.25	3.46	3.812	1.750	1.50	MK 554	3/4-10 X 4 1/2	228	17.0
		1148-32-32										
2 1/2 ^⑤	2 1/2	1147-40-40	**	6.88	4.50	4.875	2.312	1.77	MK 2557	7/8-9 X 6	232	33.2
		1148-40-40										
3 ^⑤	3	1147-48-48	7.00	8.50	5.00	6.000	2.812	2.30	MK 756	1 1/8-7 X 7	237	48.0
		1148-48-48										

1. Order Separately. 2. 2500 PSI Max. 3. 2000 PSI Max. 4. 500 PSI Max. 5. Not included in SAE J518

©Copyright April 2008

** Please Contact Engineering For Current Dimensions.