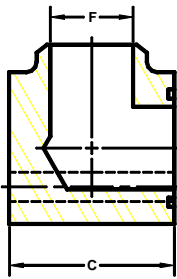


Developers and Manufacturers of Hydraulic Flanges & Components

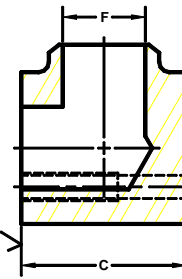
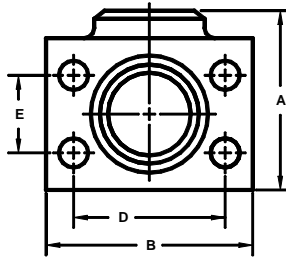
BUTT WELD ELBOW PIPE FLANGES

For Schedule 80 Pipe

SAE BOLT PATTERN			61 SERIES									
FLANGE SIZE	PIPE SIZE	PART NUMBER	A	B	C	D	E	F	MOUNTING KIT ^①			WT
									PART NO.	BOLT SIZE	O-RING	
1/2	1/2	1137-08-08	2.00	2.12	1.44	1.500	.688	.53	MK 541	5/16-18 X 2	210	1.3
		1138-08-08										
3/4	3/4	1137-12-12	2.25	2.62	1.70	1.875	.875	.75	MK 542	3/8-16 X 2 1/2	214	2.0
		1138-12-12										
1	1	1137-16-16	2.50	2.82	1.94	2.062	1.031	.94	MK 543	3/8-16 X 2 3/4	219	2.8
		1138-16-16										
1 1/4	1 1/4	1137-20-20	3.00	3.19	2.40	2.312	1.188	1.25	MK 578	7/16-14 X 3 1/4	222	4.8
		1138-20-20										
1 1/2	1 1/2	1137-24-24	3.25	3.75	2.90	2.750	1.406	1.50	MK 545	1/2-13 X 4	225	6.8
		1138-24-24										
2	2	1137-32-32	3.75	4.00	3.40	3.062	1.688	1.94	MK 546	1/2-13 X 4 1/2	228	9.5
		1138-32-32										
2 1/2	2 1/2	1137-40-40	4.50	4.50	3.96	3.500	2.000	2.32	MK 547	1/2-13 X 5	232	15.4
		1138-40-40										
3 ^③	3	1137-48-48	5.00	5.31	4.96	4.188	2.438	2.90	MK 548	5/8-11 X 6	237	24.2
		1138-48-48										
3 1/2 ^④	3 1/2	1137-56-56	5.50	6.00	5.40	4.750	2.750	3.36	MK 549	5/8-11 X 6 1/2	241	37.0
		1138-56-56										
4 ^④	4	1137-64-64	6.00	6.38	5.96	5.125	3.062	3.83	MK 550	5/8-11 X 7	245	48.0
		1138-64-64										
5 ^④	5	1137-80-80	7.50	7.25	6.90	6.000	3.625	4.81	MK 1569	5/8-11 X 8	253	61.4
		1138-80-80										



O-RING
1137
1139



FLAT-FACED
1138
1140

SAE BOLT PATTERN			62 SERIES									
FLANGE SIZE	PIPE SIZE	PART NUMBER	A	B	C	D	E	F	MOUNTING KIT ^①			WT
									PART NO.	BOLT SIZE	O-RING	
1/2	1/2	1139-08-08	2.25	2.22	1.46	1.594	.718	.53	MK 541	5/16-18 X 2	210	1.6
		1140-08-08										
3/4	3/4	1139-12-12	2.50	2.81	1.70	2.000	.937	.75	MK 542	3/8-16 X 2 1/2	214	2.5
		1140-12-12										
1	1	1139-16-16	2.75	3.19	2.21	2.250	1.093	.94	MK 2533	7/16-14 X 3	219	4.1
		1140-16-16										
1 1/4	1 1/4	1139-20-20	3.25	3.75	2.44	2.625	1.250	1.25	MK 552	1/2-13 X 3 1/4	222	6.4
		1140-20-20										
1 1/2	1 1/2	1139-24-24	3.75	4.50	2.96	3.125	1.437	1.50	MK 553	5/8-11 X 4	225	10.2
		1140-24-24										
2	2	1139-32-32	4.50	5.25	3.46	3.812	1.750	1.94	MK 554	3/4-10 X 4 1/2	228	17.0
		1140-32-32										
2 1/2 ^⑤	2 1/2	1139-40-40	5.50	6.88	4.50	4.875	2.312	2.32	MK 2557	7/8-9 X 6	232	33.2
		1140-40-40										
3 ^⑤	3	1139-48-48	6.50	8.50	5.00	6.000	2.812	2.90	MK 756	1 1/8-7 X 7	237	48.0
		1140-48-48										

1. Order Separately. 2. 2500 PSI Max. 3. 2000 PSI Max. 4. 500 PSI Max. 5. Not included in SAE J518 ©Copyright March 2006