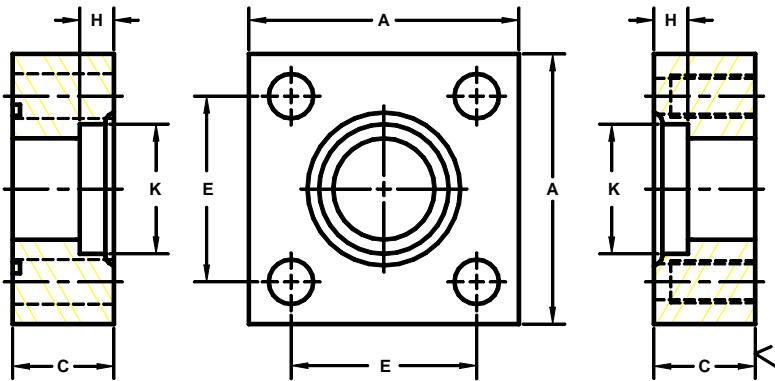


Developers and Manufacturers of Hydraulic Flanges & Components

SQUARE JIS SOCKET WELD IN-LINE FLANGES

JIS B 2291 210K BOLT PATTERN				TYPE SH(A & B tapped)								
FLANGE SIZE	PIPE SIZE	PART NUMBER	A	C	E _{mm}	E	H	K	MOUNTING KIT ^①			WT
									PART NO.	BOLT SIZE	O-RING	
15	15	1501-08-08M	2.50	.87	40.0	1.574	.43	.874	MKM 4571	M10 x 40	G25	1.3
		1504-08-08M										
20	20	1501-12-12M	2.75	.87	45.0	1.772	.47	1.091	MKM 4572	M10 x 40	G30	1.6
		1504-12-12M										
25	25	1501-16-16M	3.25	1.10	53.0	2.086	.55	1.358	MKM 4573	M12 x 50	G35	2.8
		1504-16-16M										
32	32	1501-20-20M	3.50	1.10	63.0	2.480	.63	1.701	MKM 4574	M12 x 50	G40	3.1
		1504-20-20M										
40	40	1501-24-24M	4.00	1.38	70.0	2.756	.71	1.933	MKM 4575	M16 x 60	G50	4.8
		1504-24-24M										
50	50	1501-32-32M	4.50	1.38	80.0	3.150	.79	2.406	MKM 4576	M16 x 60	G60	5.8
		1504-32-32M										
65	65	1501-40-40M	5.50	1.75	100.0	3.937	.86	3.035	MKM 4577	M20 x 75	G75	10.9
		1504-40-40M										
80	80	1501-48-48M	6.25	1.75	112.0	4.409	.98	3.543	MKM 4578	M22 x 80	G85	13.6
		1504-48-48M										



O-RING
1501
1505
Type SHA & SSA

FLAT-FACED
1504
1506
Type SHB(tapped) & SSB

JIS B 2291 210K BOLT PATTERN				TYPE SS(A & B)								
FLANGE SIZE	PIPE SIZE	PART NUMBER	A	C	E _{mm}	E	H	K	MOUNTING KIT ^①			WT
									PART NO.	BOLT SIZE	O-RING	
15	15	1505-08-08M	2.25	.87	36.0	1.417	.43	.874	MKM 4571	M10 x 40	G25	1.1
		1506-08-08M										
20	20	1505-12-12M	2.25	.87	40.0	1.574	.47	1.091	MKM 4572	M10 x 40	G30	1.0
		1506-12-12M										
25	25	1505-16-16M	2.75	1.10	48.0	1.890	.55	1.358	MKM 4573	M12 x 50	G35	1.8
		1506-16-16M										
32	32	1505-20-20M	3.00	1.10	56.0	2.205	.63	1.701	MKM 4574	M12 x 50	G40	2.1
		1506-20-20M										
40	40	1505-24-24M	3.75	1.38	65.0	2.559	.71	1.933	MKM 4575	M16 x 60	G50	4.1
		1506-24-24M										
50	50	1505-32-32M	4.00	1.38	73.0	2.874	.79	2.406	MKM 4576	M16 x 60	G60	4.3
		1506-32-32M										
65	65	1505-40-40M	5.00	1.75	92.0	3.622	.86	3.035	MKM 4577	M20 x 75	G75	8.4
		1506-40-40M										
80	80	1505-48-48M	5.50	1.75	103.0	4.055	.98	3.543	MKM 4578	M22 x 80	G85	9.5
		1506-48-48M										

1. Order Separately

©Copyright March 2006

NOTE: DIMENSIONS ARE IN INCHES UNLESS OTHERWISE NOTED.