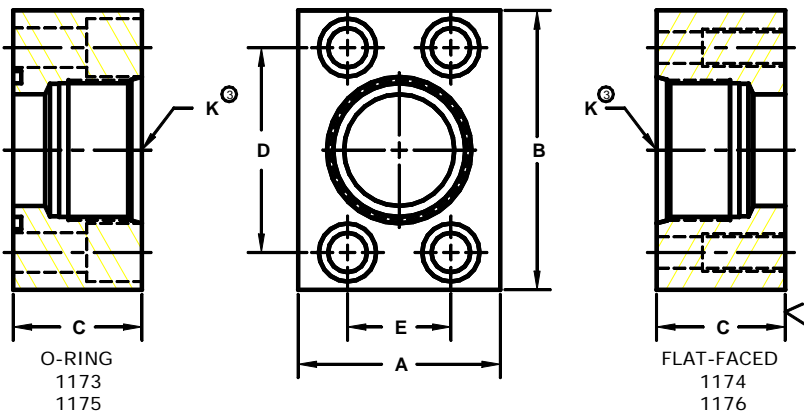


Developers and Manufacturers of Hydraulic Flanges & Components

## SAE STRAIGHT THREADED IN-LINE FLANGES

SAE BOLT PATTERN									61 SERIES			
FLANGE SIZE	PORT SIZE	PART NUMBER	A	B	C	D	E	K	MOUNTING KIT <sup>Ⓢ</sup>			WT
									PART NO.	BOLT SIZE	O-RING	
1/2	-8	1173-08-08	1.50	2.12	1.25	1.500	.688	3/4-16	MK 501	5/16-18 X 1 1/4	210	.9
		1174-08-08	-----	-----	-----	-----	-----	-----	-----	-----	---	---
3/4	-10	1173-12-10	1.75	2.62	1.50	1.875	.875	7/8-14	MK 1525	3/8-16 X 1 1/2	214	1.3
		1174-12-10	-----	-----	-----	-----	-----	-----	-----	-----	---	---
3/4	-12	1173-12-12	1.75	2.62	1.50	1.875	.875	1 1/16-12	MK 1525	3/8-16 X 1 1/2	214	1.4
		1174-12-12	-----	-----	-----	-----	-----	-----	-----	-----	---	---
1	-14	1173-16-14	2.00	2.82	1.50	2.062	1.031	1 3/16-12	MK 1542	3/8-16 X 1 1/2	219	1.6
		1174-16-14	-----	-----	-----	-----	-----	-----	-----	-----	---	---
1	-16	1173-16-16	2.00	2.82	1.50	2.062	1.031	1 5/16-12	MK 1542	3/8-16 X 1 1/2	219	1.7
		1174-16-16	-----	-----	-----	-----	-----	-----	-----	-----	---	---
1 1/4	-20	1173-20-20	2.50	3.19	1.50	2.312	1.188	1 5/8-12	MK 1527	7/16-14 X 1 1/2	222	2.3
		1174-20-20	-----	-----	-----	-----	-----	-----	-----	-----	---	---
1 1/2	-24	1173-24-24	2.75	3.75	1.75	2.750	1.406	1 7/8-12	MK 1547	1/2-13 X 1 3/4	225	3.5
		1174-24-24	-----	-----	-----	-----	-----	-----	-----	-----	---	---
2	-24	1173-32-24	3.25	4.00	1.75	3.062	1.688	1 7/8-12	MK 582	1/2-13 X 1 3/4	228	4.8
		1174-32-24	-----	-----	-----	-----	-----	-----	-----	-----	---	---
2	-32	-----	3.25	4.00	1.75	3.062	1.688	2 1/2-12	-----	-----	---	3.9
		1174-32-32	-----	-----	-----	-----	-----	-----	-----	-----	---	---
2 1/2 <sup>②</sup>	-32	1173-40-32	4.00	4.50	1.75	3.500	2.000	2 1/2-12	MK 1528	1/2-13 X 1 3/4	232	6.3
		1174-40-32	-----	-----	-----	-----	-----	-----	-----	-----	---	---



SAE BOLT PATTERN									62 SERIES			
FLANGE SIZE	PORT SIZE	PART NUMBER	A	B	C	D	E	K	MOUNTING KIT <sup>Ⓢ</sup>			WT
									PART NO.	BOLT SIZE	O-RING	
1/2	-8	1175-08-08	1.75	2.22	1.25	1.594	.718	3/4-16	MK 501	5/16-18 X 1 1/4	210	1.1
		1176-08-08	-----	-----	-----	-----	-----	-----	-----	-----	---	---
3/4	-10	1175-12-10	2.00	2.81	1.50	2.000	.937	7/8-14	MK 1525	3/8-16 X 1 1/2	214	2.0
		1176-12-10	-----	-----	-----	-----	-----	-----	-----	-----	---	---
3/4	-12	1175-12-12	2.00	2.81	1.50	2.000	.937	1 1/16-12	MK 1525	3/8-16 X 1 1/2	214	1.8
		1176-12-12	-----	-----	-----	-----	-----	-----	-----	-----	---	---
1	-14	1175-16-14	2.25	3.19	1.50	2.250	1.093	1 3/16-12	MK 1529	7/16-14 X 1 1/2	219	2.3
		1176-16-14	-----	-----	-----	-----	-----	-----	-----	-----	---	---
1	-16	1175-16-16	2.25	3.19	1.50	2.250	1.093	1 5/16-12	MK 1529	7/16-14 X 1 1/2	219	2.3
		1176-16-16	-----	-----	-----	-----	-----	-----	-----	-----	---	---
1 1/4	-20	1175-20-20	3.00	3.75	1.50	2.625	1.250	1 5/8-12	MK 1523	1/2-13 X 1 1/2	222	3.7
		1176-20-20	-----	-----	-----	-----	-----	-----	-----	-----	---	---
1 1/2	-24	1175-24-24	3.25	4.50	1.75	3.125	1.437	1 7/8-12	MK 1544	5/8-11 X 1 3/4	225	5.5
		1176-24-24	-----	-----	-----	-----	-----	-----	-----	-----	---	---
2	-32	1175-32-32	4.00	5.25	1.75	3.812	1.750	2 1/2-12	MK 563	3/4-10 X 2	228	7.5
		1176-32-32	-----	-----	-----	-----	-----	-----	-----	-----	---	---

1. Order Separately. 2. 2500 PSI Max. 3. SAE has a lower rating on the St. Thd. fitting than the flange pad. Check the fitting manufacturer for details. ©Copyright March 2006