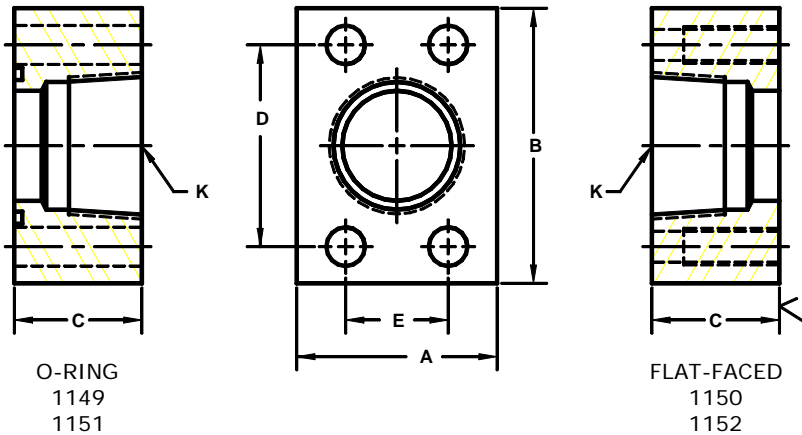


Developers and Manufacturers of Hydraulic Flanges & Components

NPTF THREADED IN-LINE FLANGES

SAE BOLT PATTERN									61 SERIES			
FLANGE SIZE	PIPE SIZE	PART NUMBER	A	B	C	D	E	K	MOUNTING KIT ^①			WT
									PART NO.	BOLT SIZE	O-RING	
1/2	1/2	1149-08-08	1.50	2.12	1.25	1.500	.688	1/2	MK 519	5/16-18 X 1 3/4	210	.8
		1150-08-08							-----	---		
3/4	3/4	1149-12-12	1.75	2.62	1.25	1.875	.875	3/4	MK 520	3/8-16 X 2	214	1.2
		1150-12-12							-----	---		
1	1	1149-16-16	2.00	2.82	1.50	2.062	1.031	1	MK 521	3/8-16 X 2 1/4	219	1.7
		1150-16-16							-----	---		
1 1/4	1 1/4	1149-20-20	2.50	3.19	1.50	2.312	1.188	1 1/4	MK 522	7/16-14 X 2 1/4	222	2.3
		1150-20-20							-----	---		
1 1/2	1 1/2	1149-24-24	2.75	3.75	1.75	2.750	1.406	1 1/2	MK 523	1/2-13 X 2 1/2	225	3.6
		1150-24-24							-----	---		
2	2	1149-32-32	3.25	4.00	1.75	3.062	1.688	2	MK 524	1/2-13 X 2 1/2	228	4.2
		1150-32-32							-----	---		
2 1/2 ^②	2 1/2	1149-40-40	4.00	4.50	2.00	3.500	2.000	2 1/2	MK 1515	1/2-13 X 2 3/4	232	6.5
		1150-40-40							-----	---		
3 ^③	3	1149-48-48	4.50	5.50	2.25	4.188	2.438	3	MK 1516	5/8-11 X 3 1/2	237	9.8
		1150-48-48							-----	---		
3 1/2 ^④	3 1/2	1149-56-56	5.00	6.00	2.25	4.750	2.750	3 1/2	MK 2576	5/8-11 X 3 1/2	241	11.0
		1150-56-56							-----	---		
4 ^④	4	1149-64-64	5.50	6.50	2.50	5.125	3.062	4	MK 2545	5/8-11 X 3 1/2	245	14.5
		1150-64-64							-----	---		



SAE BOLT PATTERN									62 SERIES			
FLANGE SIZE	PIPE SIZE	PART NUMBER	A	B	C	D	E	K	MOUNTING KIT ^①			WT
									PART NO.	BOLT SIZE	O-RING	
1/2	1/2	1151-08-08	1.75	2.22	1.25	1.594	.718	1/2	MK 519	5/16-18 X 1 3/4	210	1.1
		1152-08-08							-----	---		
3/4	3/4	1151-12-12	2.00	2.81	1.25	2.000	.937	3/4	MK 520	3/8-16 X 2	214	1.5
		1152-12-12							-----	---		
1	1	1151-16-16	2.25	3.19	1.50	2.250	1.093	1	MK 525	7/16-14 X 2 1/4	219	2.3
		1152-16-16							-----	---		
1 1/4	1 1/4	1151-20-20	3.00	3.75	1.50	2.625	1.250	1 1/4	MK 526	1/2-13 X 2 1/2	222	3.7
		1152-20-20							-----	---		
1 1/2	1 1/2	1151-24-24	3.25	4.50	1.75	3.125	1.437	1 1/2	MK 527	5/8-11 X 2 3/4	225	5.6
		1152-24-24							-----	---		
2	2	1151-32-32	4.00	5.25	1.75	3.812	1.750	2	MK 516	3/4-10 X 3	228	7.8
		1152-32-32							-----	---		
2 1/2 ^⑤	2 1/2	1151-40-40	5.00	6.88	2.00	4.875	2.312	2 1/2	MK 517	7/8-9 X 3 1/2	232	15.1
		1152-40-40							-----	---		
3 ^⑤	3	1151-48-48	6.00	8.50	2.50	6.000	2.812	3	MK 718	1 1/8-7 X 4 1/2	237	27.5
		1152-48-48							-----	---		

1. Order Separately. 2. 2500 PSI Max. 3. 2000 PSI Max. 4. 500 PSI Max. 5. Not included in SAE J518 ©Copyright March 2006