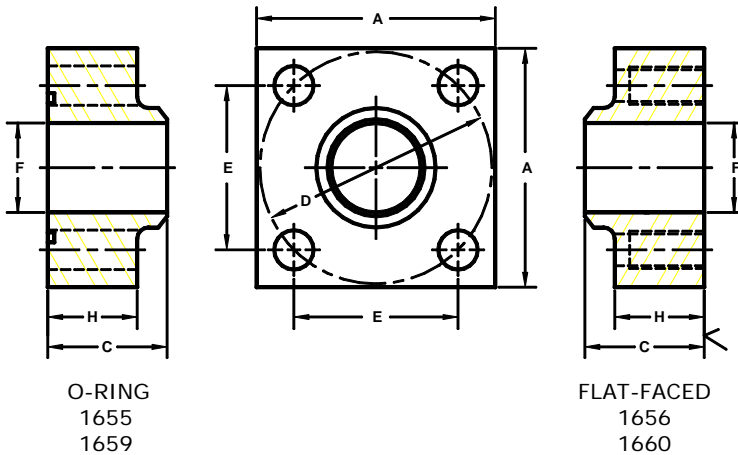


Developers and Manufacturers of Hydraulic Flanges & Components

ISO6164 BUTT WELD IN-LINE FLANGES

For Schedule XXS Pipe

ISO 6164			250 BAR SERIES																		
FLANGE SIZE	PIPE SIZE	PART NUMBER	A	C	D _{mm}	E	H	F	MOUNTING KIT ^①			WT									
									PART NO.	BOLT SIZE	O-RING										
13	1/2	1655-08-08M	PLEASE USE THE 400 BAR SERIES FOUND BELOW. THE BLOCK SIZE, BOLT PATTERN AND THE O-RING ARE IDENTICAL IN FLANGE SIZES 13 – 38. IF YOU HAVE ANY QUESTIONS CALL ENGINEERING AT 1-800-521-7918.																		
		1656-08-08M																			
19	3/4	1655-12-12M																			
		1656-12-12M																			
25	1	1655-16-16M																			
		1656-16-16M																			
32	1 1/4	1655-20-20M																			
		1656-20-20M																			
38	1 1/2	1655-24-24M																			
		1656-24-24M																			
51	2	1655-32-32M											4.00	2.25	98	2.728	1.60	1.50	MKM 3531	M16 X 65	228
		1656-32-32M																			
56	2 1/2	1655-40-40M	4.75	2.50	118	3.285	1.88	1.77	MKM 5573	M20 x 80	232										
		1656-40-40M																			
63	3	1655-48-48M	5.50	3.00	145	4.037	2.28	2.30	MKM 5558	M20 X 90	237										
		1656-48-48M																			



ISO 6164			400 BAR SERIES									
FLANGE SIZE	PIPE SIZE	PART NUMBER	A	C	D _{mm}	E	H	F	MOUNTING KIT ^①			WT
									PART NO.	BOLT SIZE	O-RING	
13	1/2	1659-08-08M	1.75	1.12	42	1.170	.81	.25	MKM 512	M8 X 35	210	
		1660-08-08M										
19	3/4	1659-12-12M	2.00	1.25	50	1.392	.90	.44	MKM 5559	M8 X 35	214	
		1660-12-12M										
25	1	1659-16-16M	2.50	1.50	62	1.726	1.00	.60	MKM 503	M10 X 40	219	
		1660-16-16M										
32	1 1/4	1659-20-20M	3.00	1.75	73	2.032	1.20	.89	MKM 1502	M12 X 50	222	
		1660-20-20M										
38	1 1/2	1659-24-24M	3.50	2.00	85	2.366	1.44	1.10	MKM 515	M16 X 60	225	
		1660-24-24M										
51	2	1659-32-32M	4.00	2.25	98	2.728	1.60	1.50	MKM 5560	M16 X 65	331	
		1660-32-32M										
56	2 1/2	1659-40-40M	4.75	2.75	118	3.285	1.98	1.77	MKM 5538	M20 X 80	335	
		1660-40-40M										
63	3	1659-48-48M	6.00	3.00	145	4.037	2.12	2.30	MKM 5561	M24 X 90	337	
		1660-48-48M										
70	3 1/2	1659-56-56M	6.50	3.50	160	4.454	2.46	2.73	MKM 5562	M24 X 100	340	
		1660-56-56M										
80	4	1659-64-64M	7.00	4.00	175	4.872	2.85	3.15	MKM 5563	M30 X 120	341	
		1660-64-64M										

1. Order Separately

©Copyright March 2006

NOTE: DIMENSIONS ARE IN INCHES UNLESS OTHERWISE NOTED.