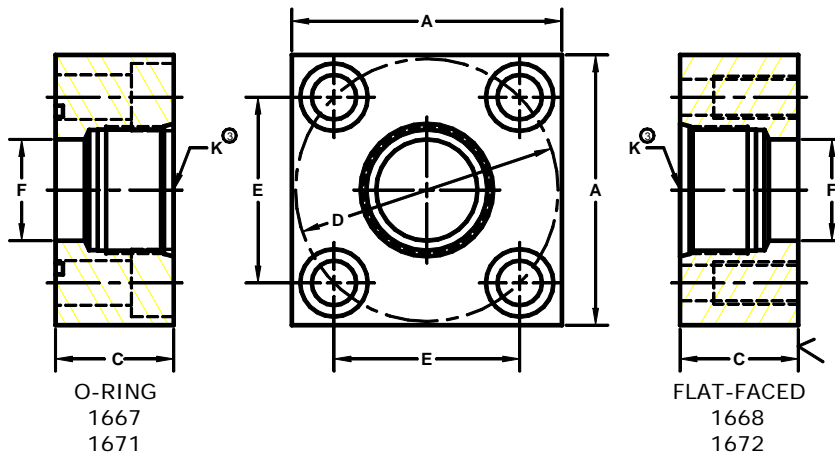


Developers and Manufacturers of Hydraulic Flanges & Components

ISO6164 STRAIGHT THREADED IN-LINE FLANGES

ISO 6164 x SAE ORB			250 BAR SERIES ²									
FLANGE SIZE	PORT SIZE	PART NUMBER	A	C	D _{mm}	E	F	K	MOUNTING KIT ¹			WT
									PART NO.	BOLT SIZE	O-RING	
13	-8	1667-08-08M	1.75	1.25	42	1.170	.50	3/4-16	MKM 512	M8 X 35	210	
		1668-08-08M							-----	----		
19	-12	1667-12-12M	2.00	1.25	50	1.392	.75	1 1/16-12	MKM 5569	M8 X 35	214	
		1668-12-12M							-----	----		
25	-16	1667-16-16M	2.50	1.50	62	1.726	1.00	1 5/16-12	MKM 503	M10 X 40	219	
		1668-16-16M							-----	----		
32	-20	1667-20-20M	3.00	1.50	73	2.032	1.25	1 5/8-12	MKM 1527	M12 X 40	222	
		1668-20-20M							-----	----		
38	-24	1667-24-24M	3.50	1.75	85	2.366	1.50	1 7/8-12	MKM 1544	M16 X 45	225	
		1668-24-24M							-----	----		
51	-32	1667-32-32M	4.00	1.75	98	2.728	1.94	2 1/2-12	MKM 1524	M16 X 45	228	
		1668-32-32M							-----	----		
56	-32	1667-40-32M	4.75	2.00	118	3.285	2.32	2 1/2-12	MKM 5570	M20 x 60	232	
		1668-40-32M							-----	----		
63	-32	1667-48-32M	5.50	2.25	145	4.037	2.32	2 1/2-12	MKM 5571	M20 X 65	237	
		1668-48-32M							-----	----		



ISO 6164 x ISO 6149			250 BAR SERIES ²									
FLANGE SIZE	PORT SIZE	PART NUMBER	A	C	D _{mm}	E	F	K	MOUNTING KIT ¹			WT
									PART NO.	BOLT SIZE	O-RING	
13	-8	1671-08-08M	1.75	1.25	42	1.170	.50	M18 x 1.5	MKM 512	M8 X 35	210	
		1672-08-08M							-----	----		
19	-12	1671-12-12M	2.00	1.25	50	1.392	.75	M27 x 2	MKM 5569	M8 X 35	214	
		1672-12-12M							-----	----		
25	-16	1671-16-16M	2.50	1.50	62	1.726	1.00	M33 x 2	MKM 503	M10 X 40	219	
		1672-16-16M							-----	----		
32	-20	1671-20-20M	3.00	1.50	73	2.032	1.25	M42 x 2	MKM 1527	M12 X 40	222	
		1672-20-20M							-----	----		
38	-24	1671-24-24M	3.50	1.75	85	2.366	1.50	M48 x 2	MKM 1544	M16 X 45	225	
		1672-24-24M							-----	----		
51	-32	1671-32-32M	4.00	1.75	98	2.728	1.94	M60 x 2	MKM 1524	M16 X 45	228	
		1672-32-32M							-----	----		
56	-32	1671-40-32M	4.75	2.00	118	3.285	2.32	M60 x 2	MKM 5570	M20 X 60	232	
		1672-40-32M							-----	----		
63	-32	1671-48-32M	5.50	2.25	145	4.037	2.32	M60 x 2	MKM 5571	M20 X 65	237	
		1672-48-32M							-----	----		

1. Order Separately 2. 400 BAR Series also available, contact engineering for information. ©Copyright March 2006
 3. SAE J514 and ISO 6149 have a lower rating on the St. Thd. Fitting than the flange pad. Check the fitting manufacturer for details.

NOTE: DIMENSIONS ARE IN INCHES UNLESS OTHERWISE NOTED.