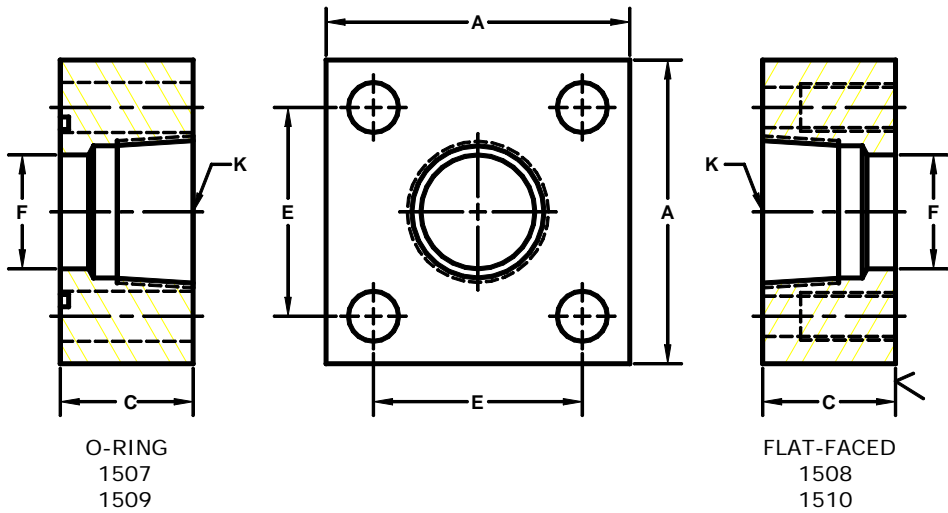


Developers and Manufacturers of Hydraulic Flanges & Components

SQUARE, JIS NPTF THREADED IN-LINE FLANGES

JIS B 2291 210K BOLT PATTERN									TYPE SHA & SHB		
FLANGE SIZE	PIPE SIZE	PART NUMBER	A	C	E _{mm}	E	F	K	MOUNTING KIT ^①		
									PART NO.	BOLT SIZE	O-RING
15	1/2	1507-08-08M	2.50	1.25	40.0	1.574	.50	1/2	MKM 5507	M10 x 50	G25
		1508-08-08M							-----	-----	
20	3/4	1507-12-12M	2.75	1.25	45.0	1.772	.75	3/4	MKM 5508	M10 x 50	G30
		1508-12-12M							-----	-----	
25	1	1507-16-16M	3.25	1.50	53.0	2.086	1.00	1	MKM 4588	M12 x 60	G35
		1508-16-16M							-----	-----	
32	1 1/4	1507-20-20M	3.50	1.50	63.0	2.480	1.25	1 1/4	MKM 4589	M12 x 60	G40
		1508-20-20M							-----	-----	
40	1 1/2	1507-24-24M	4.00	1.75	70.0	2.756	1.50	1 1/2	MKM 5509	M16 x 70	G50
		1508-24-24M							-----	-----	
50	2	1507-32-32M	4.50	1.75	80.0	3.150	1.94	2	MKM 5521	M16 x 70	G60
		1508-32-32M							-----	-----	
65	2 1/2	1507-40-40M	5.50	2.00	100.0	3.937	2.44	2 1/2	MKM 4592	M20 x 80	G75
		1508-40-40M							-----	-----	
80	3	1507-48-48M	6.25	2.25	112.0	4.409	2.80	3	MKM 4593	M22 x 90	G85
		1508-48-48M							-----	-----	



JIS B 2291 210K BOLT PATTERN									TYPE SSA & SSB		
FLANGE SIZE	PIPE SIZE	PART NUMBER	A	C	E _{mm}	E	F	K	MOUNTING KIT ^①		
									PART NO.	BOLT SIZE	O-RING
15	1/2	1509-08-08M	2.25	1.25	36.0	1.417	.50	1/2	MKM 5507	M10 X 50	G25
		1510-08-08M							-----	-----	
20	3/4	1509-12-12M	2.25	1.25	40.0	1.574	.75	3/4	MKM 5508	M10 x 50	G30
		1510-12-12M							-----	-----	
25	1	1509-16-16M	2.75	1.50	48.0	1.890	1.00	1	MKM 4588	M12 X 60	G35
		1510-16-16M							-----	-----	
32	1 1/4	1509-20-20M	3.00	1.50	56.0	2.205	1.25	1 1/4	MKM 4589	M12 x 60	G40
		1510-20-20M							-----	-----	
40	1 1/2	1509-24-24M	3.75	1.75	65.0	2.559	1.50	1 1/2	MKM 5509	M16 x 70	G50
		1510-24-24M							-----	-----	
50	2	1509-32-32M	4.00	1.75	73.0	2.874	1.94	2	MKM 5521	M16 X 70	G60
		1510-32-32M							-----	-----	
65	2 1/2	1509-40-40M	5.00	2.00	92.0	3.622	2.44	2 1/2	MKM 4592	M20 X 80	G75
		1510-40-40M							-----	-----	
80	3	1509-48-48M	5.50	2.25	103.0	4.055	2.80	3	MKM 4593	M22 x 90	G85
		1510-48-48M							-----	-----	

1. Order Separately.

©Copyright March 2008

NOTE: DIMENSIONS ARE IN INCHES UNLESS OTHERWISE NOTED.