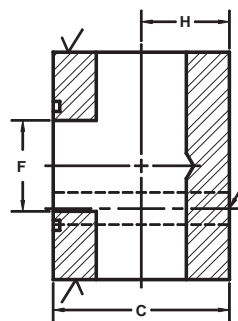
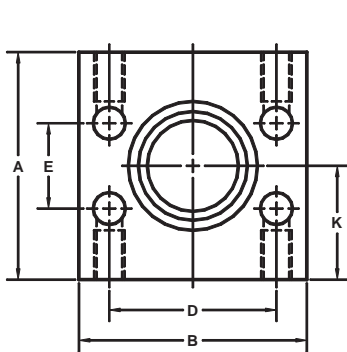


FLANGED TEE FLANGES

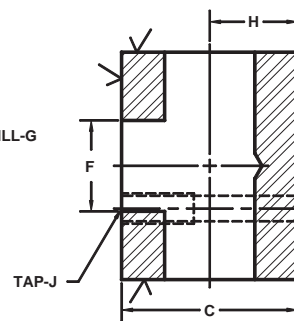
SAE BOLT PATTERN										61 SERIES					
FLANGE SIZE	FLANGE SIZE	PART NUMBER	A	B	C	D	E	F	G J	H	K	MOUNTING KIT®			WT
												PART NO.	BOLT SIZE	O-RING	
1/2	1/2	1185-08-08	2.50	2.12	2.00	1.500	.688	.50	.34	.91	1.25	MK 575	5/16-18 x 2 1/2	210	2.5
		1186-08-08							5/16-18						
3/4	3/4	1185-12-12	2.75	2.62	2.25	1.875	.875	.75	.41	1.03	1.38	MK 576	3/8-16 x 3	214	3.6
		1186-12-12							3/8-16						
1	1	1185-16-16	3.00	2.82	2.50	2.062	1.031	1.00	.41	1.16	1.50	MK 577	3/8-16 x 3 1/4	219	4.6
		1186-16-16							3/8-16						
1 1/4	1 1/4	1185-20-20	3.50	3.19	3.00	2.312	1.188	1.25	.47	1.44	1.75	MK 591	7/16-14 x 4	222	7.1
		1186-20-20							7/16-14						
1 1/2	1 1/2	1185-24-24	4.00	3.75	3.50	2.750	1.406	1.50	.53	1.62	2.00	MK 579	1/2-13 x 4 1/2	225	11.2
		1186-24-24							1/2-13						
2	2	1185-32-32	4.25	4.00	4.00	3.062	1.688	1.94	.53	1.91	2.12	MK 592	1/2-13 x 5	228	13.8
		1186-32-32							1/2-13						
2 1/2 ^②	2 1/2	1185-40-40	4.50	4.50	4.50	3.500	2.000	2.44	.53	2.14	2.25	MK 593	1/2-13 x 5 1/2	232	17.0
		1186-40-40							1/2-13						
3 ^③	3	1185-48-48	5.50	5.31	5.50	4.188	2.438	2.94	.66	2.58	2.75	MK 594	5/8-11 x 6 1/2	237	29.9
		1186-48-48							5/8-11						
3 1/2 ^④	3 1/2	1185-56-56	6.00	6.00	6.00	4.750	2.750	3.44	.66	3.00	3.00	MK 1589	5/8-11 x 7	241	38.0
		1186-56-56							5/8-11						
4 ^④	4	1185-64-64	6.00	6.38	6.00	5.125	3.062	3.94	.66	2.81	3.00	MK 550	5/8-11 x 7	245	35.8
		1186-64-64							5/8-11						
5 ^④	5	1185-80-80				6.000	3.625		.66					253	
		1186-80-80							5/8-11						

O-Ring Style

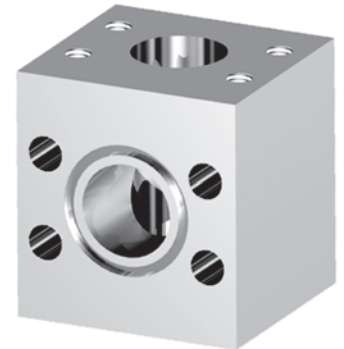
Companion Style (Flat Face)



Model 1185 / 1187



Model 1186 / 1188



SAE BOLT PATTERN										62 SERIES					
FLANGE SIZE	FLANGE SIZE	PART NUMBER	A	B	C	D	E	F	G J	H	K	MOUNTING KIT®			WT
												PART NO.	BOLT SIZE	O-RING	
1/2	1/2	1187-08-08	2.50	2.22	2.00	1.594	.718	.50	.34	.94	1.25	MK 575	5/16-18 x 2 1/2	210	2.7
		1188-08-08							5/16-18						
3/4	3/4	1187-12-12	3.00	2.81	2.50	2.000	.937	.75	.41	1.19	1.50	MK 595	3/8-16 x 3 1/4	214	5.1
		1188-12-12							3/8-16						
1	1	1187-16-16	3.50	3.19	3.00	2.250	1.093	1.00	.47	1.38	1.75	MK 596	7/16-14 x 4	219	7.7
		1188-16-16							7/16-14						
1 1/4	1 1/4	1187-20-20	4.00	3.75	3.50	2.625	1.250	1.25	.53	1.62	2.00	MK 4565	1/2-13 x 4 1/2	222	11.9
		1188-20-20							1/2-13						
1 1/2	1 1/2	1187-24-24	4.50	4.50	4.00	3.125	1.437	1.50	.66	1.88	2.25	MK 597	5/8-11 x 5	225	17.8
		1188-24-24							5/8-11						
2	2	1187-32-32	5.00	5.25	5.00	3.812	1.750	1.94	.78	2.25	2.50	MK 598	3/4-10 x 6	228	27.8
		1188-32-32							3/4-10						
2 1/2 ^⑤	2 1/2	1187-40-40	7.00	7.00	5.00	4.875	2.312	2.44	.94	2.50	3.50	MK 1596	7/8-9 x 6 1/2	232	54.5
		1188-40-40							7/8-9						
3 ^⑤	3	1187-48-48	9.00	8.50	6.00	6.000	2.812	2.94	1.19	3.00	4.50	MK 2758	1 1/8-7 x 8	237	103
		1188-48-48							1 1/8-7						

① Order Separately ② 2500 PSI Max ③ 2000 PSI Max ④ 500 PSI Max ⑤ Not Included in SAE J518 specifications