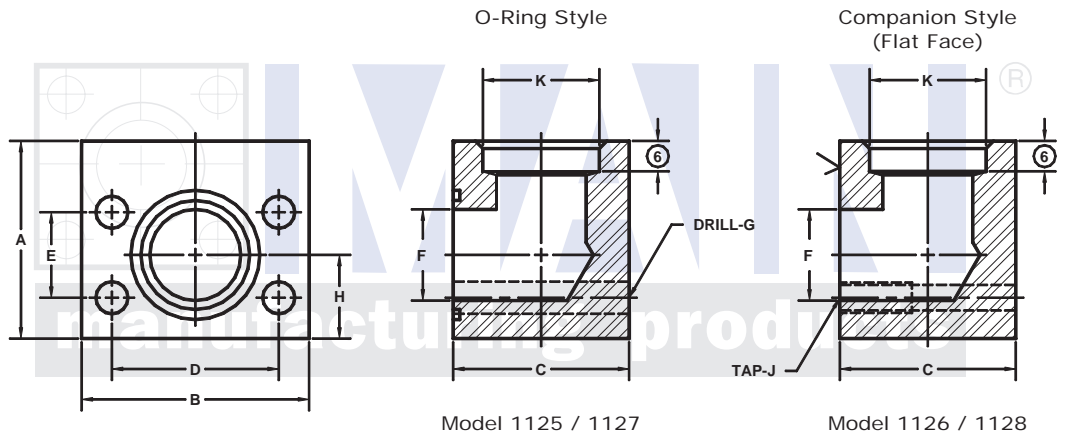
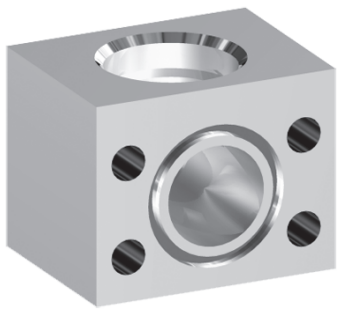


SOCKET WELD ELBOW PIPE FLANGES

SAE BOLT PATTERN										61 SERIES					
FLANGE SIZE	PIPE SIZE	PART NUMBER	A	B	C	D	E	F	G J	H	K	MOUNTING KIT®			WT
												PART NO.	BOLT SIZE	O-RING	
1/2	1/2	1125-08-08	1.75	2.12	1.44	1.500	.688	.50	.34	.75	.860	MK 541	5/16-18 x 2	210	1.3
		1126-08-08							5/16-18						
1/2	3/4	1125-08-12	2.00	2.12	1.70	1.500	.688	.50	.34	.75	1.070	MK 1552	5/16-18 x 2 1/4	210	1.7
		1126-08-12							5/16-18						
3/4	1/2	1125-12-08	2.00	2.62	1.70	1.875	.875	.75	.41	.88	.860	MK 542	3/8-16 x 2 1/2	214	2.1
		1126-12-08							3/8-16						
3/4	3/4	1125-12-12	2.00	2.62	1.70	1.875	.875	.75	.41	.88	1.070	MK 542	3/8-16 x 2 1/2	214	2.0
		1126-12-12							3/8-16						
3/4	1	1125-12-16	2.50	2.62	1.94	1.875	.875	.75	.41	.88	1.335	MK 3513	3/8-16 x 2 3/4	214	2.9
		1126-12-16							3/8-16						
1	1/2	1125-16-08	2.25	2.82	1.94	2.062	1.031	1.00	.41	1.00	.860	MK 543	3/8-16 x 2 3/4	219	2.9
		1126-16-08							3/8-16						
1	3/4	1125-16-12	2.25	2.82	1.94	2.062	1.031	1.00	.41	1.00	1.070	MK 543	3/8-16 x 2 3/4	219	2.8
		1126-16-12							3/8-16						
1	1	1125-16-16	2.25	2.82	1.94	2.062	1.031	1.00	.41	1.00	1.335	MK 543	3/8-16 x 2 3/4	219	2.7
		1126-16-16							3/8-16						
1	1 1/4	1125-16-20	3.00	3.00	2.50	2.062	1.031	1.00	.41	1.25	1.680	MK 577	3/8-16 x 3 1/4	219	5.1
		1126-16-20							3/8-16						
1 1/4	3/4	1125-20-12	2.75	3.19	2.40	2.312	1.188	1.25	.47	1.25	1.070	MK 578	7/16-14 x 3 1/4	222	5.0
		1126-20-12							7/16-14						
1 1/4	1	1125-20-16	2.75	3.19	2.40	2.312	1.188	1.25	.47	1.25	1.335	MK 578	7/16-14 x 3 1/4	222	4.9
		1126-20-16							7/16-14						



3181 TRI-PARK DR. GRAND BLANC, MI 48439 800-521-7918 810-953-1380 FAX 810-953-1385 INFO@MAINMFG.COM

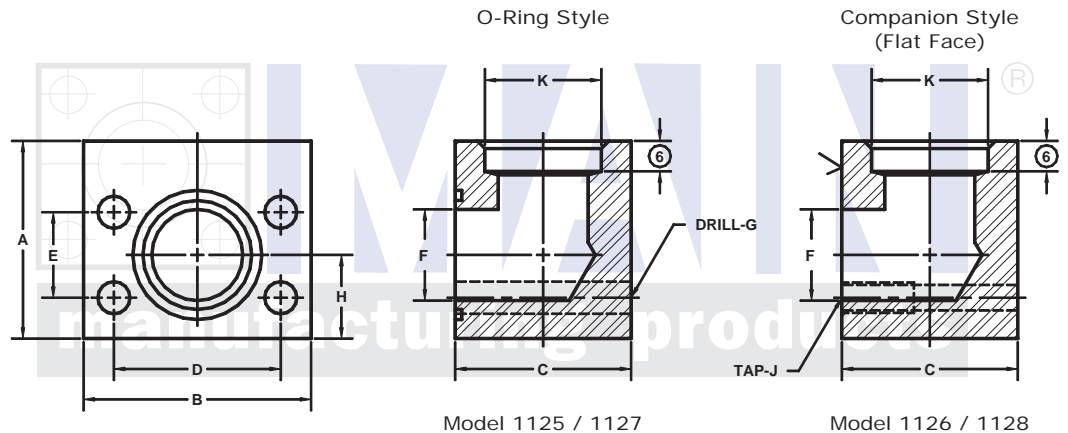
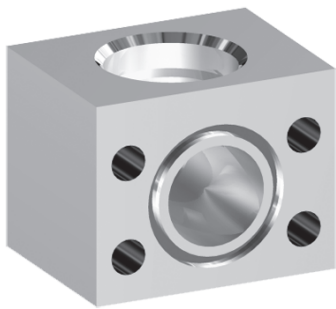
SAE BOLT PATTERN										62 SERIES					
FLANGE SIZE	PIPE SIZE	PART NUMBER	A	B	C	D	E	F	G J	H	K	MOUNTING KIT®			WT
												PART NO.	BOLT SIZE	O-RING	
1/2	1/2	1127-08-08	2.00	2.22	1.46	1.594	.718	.50	.34	.88	.860	MK 541	5/16-18 x 2	210	1.6
		1128-08-08							5/16-18						
1/2	3/4	1127-08-12	2.00	2.22	1.75	1.594	.718	.50	.34	.88	1.070	MK 1552	5/16-18 x 2 1/4	210	1.9
		1128-08-12							5/16-18						
3/4	1/2	1127-12-08	2.25	2.81	1.70	2.000	.937	.75	.41	1.00	.860	MK 542	3/8-16 x 2 1/2	214	2.7
		1128-12-08							3/8-16						
3/4	3/4	1127-12-12	2.25	2.81	1.70	2.000	.937	.75	.41	1.00	1.070	MK 542	3/8-16 x 2 1/2	214	2.6
		1128-12-12							3/8-16						
3/4	1	1127-12-16	2.25	2.81	2.25	2.000	.937	.75	.41	1.00	1.335	MK 3513	3/8-16 x 2 3/4	214	3.3
		1128-12-16							3/8-16						
1	3/4	1127-16-12	2.50	3.19	2.21	2.250	1.093	1.00	.47	1.12	1.070	MK 2533	7/16-14 x 3	219	4.2
		1128-16-12							7/16-14						
1	1	1127-16-16	2.50	3.19	2.21	2.250	1.093	1.00	.47	1.12	1.335	MK 2533	7/16-14 x 3	219	4.1
		1128-16-16							7/16-14						
1	1 1/4	1127-16-20	2.50	3.19	2.50	2.250	1.093	1.00	.47	1.12	1.680	MK 4582	7/16-14 x 3 1/4	219	4.7
		1128-16-20							7/16-14						

① Order Separately

® C'bore depth by pipe size: 1/2" is .38"; 3/4" to 1 1/4" is .50"

SOCKET WELD ELBOW PIPE FLANGES

SAE BOLT PATTERN										61 SERIES					
FLANGE SIZE	PIPE SIZE	PART NUMBER	A	B	C	D	E	F	G J	H	K	MOUNTING KIT®			WT
												PART NO.	BOLT SIZE	O-RING	
1 1/4	1 1/4	1125-20-20	2.75	3.19	2.40	2.312	1.188	1.25	.47	1.25	1.680	MK 578	7/16-14 x 3 1/4	222	4.8
		1126-20-20							7/16-14						
1 1/4	1 1/2	1125-20-24	3.00	3.19	3.00	2.312	1.188	1.25	.47	1.25	1.920	MK 591	7/16-14 x 4	222	6.0
		1126-20-24							7/16-14						
1 1/2	3/4	1125-24-12	3.00	3.75	2.90	2.750	1.406	1.50	.53	1.38	1.070	MK 545	1/2-13 x 4	225	7.8
		1126-24-12							1/2-13						
1 1/2	1	1125-24-16	3.00	3.75	2.90	2.750	1.406	1.50	.53	1.38	1.335	MK 545	1/2-13 x 4	225	7.6
		1126-24-16							1/2-13						
1 1/2	1 1/4	1125-24-20	3.00	3.75	2.90	2.750	1.406	1.50	.53	1.38	1.680	MK 545	1/2-13 x 4	225	7.4
		1126-24-20							1/2-13						
1 1/2	1 1/2	1125-24-24	3.00	3.75	2.90	2.750	1.406	1.50	.53	1.38	1.920	MK 545	1/2-13 x 4	225	7.3
		1126-24-24							1/2-13						
1 1/2	2	1125-24-32	3.50	3.75	3.50	2.750	1.406	1.50	.53	1.38	2.411	MK 579	1/2-13 x 4 1/2	225	9.8
		1126-24-32							1/2-13						
2	1 1/4	1125-32-20	3.50	4.00	3.40	3.062	1.688	1.94	.53	1.62	1.680	MK 546	1/2-13 x 4 1/2	228	10.4
		1126-32-20							1/2-13						
2	1 1/2	1125-32-24	3.50	4.00	3.40	3.062	1.688	1.94	.53	1.62	1.920	MK 546	1/2-13 x 4 1/2	228	10.2
		1126-32-24							1/2-13						
2	2	1125-32-32	3.50	4.00	3.40	3.062	1.688	1.94	.53	1.62	2.411	MK 546	1/2-13 x 4 1/2	228	9.9
		1126-32-32							1/2-13						
2	2 1/2	1125-32-40	3.50	4.00	4.00	3.062	1.688	1.94	.53	1.62	2.911	MK 592	1/2-13 x 5	228	11.0
		1126-32-40							1/2-13						



3181 TRI-PARK DR. GRAND BLANC, MI 48439 800-521-7918 810-953-1380 FAX 810-953-1385 INFO@MAINMFG.COM

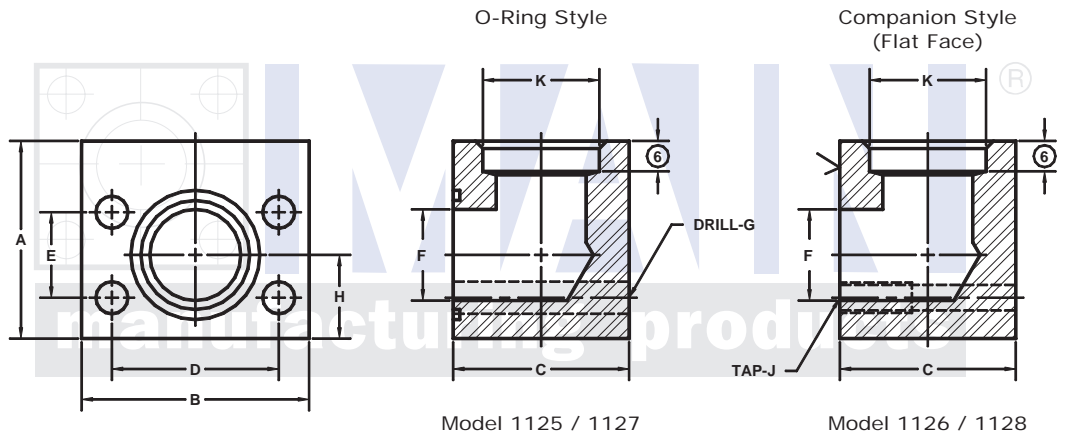
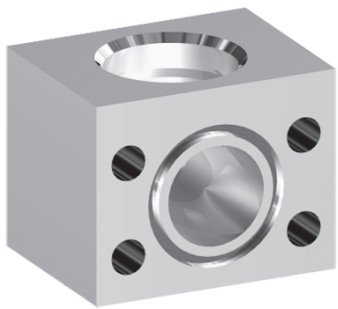
SAE BOLT PATTERN										62 SERIES					
FLANGE SIZE	PIPE SIZE	PART NUMBER	A	B	C	D	E	F	G J	H	K	MOUNTING KIT®			WT
												PART NO.	BOLT SIZE	O-RING	
1 1/4	3/4	1127-20-12	3.00	3.75	2.44	2.625	1.250	1.25	.53	1.38	1.070	MK 552	1/2-13 x 3 1/4	222	6.7
		1128-20-12							1/2-13						
1 1/4	1	1127-20-16	3.00	3.75	2.44	2.625	1.250	1.25	.53	1.38	1.335	MK 552	1/2-13 x 3 1/4	222	6.5
		1128-20-16							1/2-13						
1 1/4	1 1/4	1127-20-20	3.00	3.75	2.44	2.625	1.250	1.25	.53	1.38	1.680	MK 552	1/2-13 x 3 1/4	222	6.3
		1128-20-20							1/2-13						
1 1/4	1 1/2	1127-20-24	3.00	3.75	3.00	2.625	1.250	1.25	.53	1.38	1.920	MK 587	1/2-13 x 4	222	7.6
		1128-20-24							1/2-13						
1 1/2	1	1127-24-16	3.50	4.50	2.96	3.125	1.437	1.50	.66	1.62	1.335	MK 553	5/8-11 x 4	225	11.2
		1128-24-16							5/8-11						
1 1/2	1 1/4	1127-24-20	3.50	4.50	2.96	3.125	1.437	1.50	.66	1.62	1.680	MK 553	5/8-11 x 4	225	11.0
		1128-24-20							5/8-11						
1 1/2	1 1/2	1127-24-24	3.50	4.50	2.96	3.125	1.437	1.50	.66	1.62	1.920	MK 553	5/8-11 x 4	225	10.7
		1128-24-24							5/8-11						
1 1/2	2	1127-24-32	3.50	4.50	3.50	3.125	1.437	1.50	.66	1.62	2.411	MK 1587	5/8-11 x 4 1/2	225	12.2
		1128-24-32							5/8-11						

① Order Separately

® C'bore depth by pipe size: 3/4" to 2 1/2" is .50"

SOCKET WELD ELBOW PIPE FLANGES

SAE BOLT PATTERN										61 SERIES					
FLANGE SIZE	PIPE SIZE	PART NUMBER	A	B	C	D	E	F	G J	H	K	MOUNTING KIT [Ⓞ]			WT
												PART NO.	BOLT SIZE	O-RING	
2½ ^②	2	1125-40-32	4.00	4.50	3.96	3.500	2.000	2.44	.53	2.00	2.411	MK 547	1/2-13 x 5	232	14.9
		1126-40-32							1/2-13						
2½ ^②	2½	1125-40-40	4.00	4.50	3.96	3.500	2.000	2.44	.53	2.00	2.911	MK 547	1/2-13 x 5	232	13.9
		1126-40-40							1/2-13						
2½ ^②	3	1125-40-48	4.50	5.00	5.00	3.500	2.000	2.44	.53	2.00	3.540	MK 2581	1/2-13 x 6	232	22.8
		1126-40-48							1/2-13						
3 ^③	2½	1125-48-40	5.00	5.31	4.96	4.188	2.438	2.94	.66	2.25	2.911	MK 548	5/8-11 x 6	237	26.5
		1126-48-40							5/8-11						
3 ^③	3	1125-48-48	5.00	5.31	4.96	4.188	2.438	2.94	.66	2.25	3.540	MK 548	5/8-11 x 6	237	24.9
		1126-48-48							5/8-11						
3½ ^④	3	1125-56-48	5.50	6.00	5.40	4.750	2.750	3.44	.66	2.50	3.540	MK 549	5/8-11 x 6 1/2	241	36.8
		1126-56-48							5/8-11						
3½ ^④	3½	1125-56-56	5.50	6.00	5.40	4.750	2.750	3.44	.66	2.50	4.045	MK 549	5/8-11 x 6 1/2	241	34.8
		1126-56-56							5/8-11						
4 ^④	3½	1125-64-56	6.00	6.38	5.96	5.125	3.062	3.94	.66	2.75	4.045	MK 550	5/8-11 x 7	245	44.4
		1126-64-56							5/8-11						
4 ^④	4	1125-64-64	6.00	6.38	5.96	5.125	3.062	3.94	.66	2.75	4.550	MK 550	5/8-11 x 7	245	41.9
		1126-64-64							5/8-11						
5 ^④	4	1125-80-64	7.00	7.25	6.90	6.000	3.625	4.94	.66	3.38	4.550	MK 1569	5/8-11 x 8	253	66.5
		1126-80-64							5/8-11						
5 ^④	5	1125-80-80	7.00	7.25	6.90	6.000	3.625	4.94	.66	3.38	5.635	MK 1569	5/8-11 x 8	253	60.9
		1126-80-80							5/8-11						



3181 TRI-PARK DR. GRAND BLANC, MI 48439 800-521-7918 810-953-1380 FAX 810-953-1385 INFO@MAINMFG.COM

SAE BOLT PATTERN										62 SERIES					
FLANGE SIZE	PIPE SIZE	PART NUMBER	A	B	C	D	E	F	G J	H	K	MOUNTING KIT [Ⓞ]			WT
												PART NO.	BOLT SIZE	O-RING	
2	1½	1127-32-24	4.00	5.25	3.46	3.812	1.750	1.94	.78	2.00	1.920	MK 554	3/4-10 x 4 1/2	228	16.5
		1128-32-24							3/4-10						
2	2	1127-32-32	4.00	5.25	3.46	3.812	1.750	1.94	.78	2.00	2.411	MK 554	3/4-10 x 4 1/2	228	15.9
		1128-32-32							3/4-10						
2	2½	1127-32-40	4.00	5.25	4.00	3.812	1.750	1.94	.78	2.00	2.911	MK 1507	3/4-10 x 5	228	17.5
		1128-32-40							3/4-10						
2½ ^⑤	2	1127-40-32	5.50	6.88	4.50	4.875	2.312	2.44	.94	2.50	2.411	MK 2557	7/8-9 x 6	232	40.0
		1128-40-32							7/8-9						
2½ ^⑤	2½	1127-40-40	5.50	6.88	4.50	4.875	2.312	2.44	.94	2.50	2.911	MK 2557	7/8-9 x 6	232	38.6
		1128-40-40							7/8-9						
2½ ^⑤	3	1127-40-48	5.50	6.88	5.00	4.875	2.312	2.44	.94	2.50	3.540	MK 1596	7/8-9 x 6 1/2	232	41.5
		1128-40-48							7/8-9						
3 ^⑤	2½	1127-48-40	6.00	8.50	5.00	6.000	2.812	2.94	1.19	3.00	2.911	MK 756	1 1/8-7 x 7	237	58.6
		1128-48-40							1 1/8-7						
3 ^⑤	3	1127-48-48	6.00	8.50	5.00	6.000	2.812	2.94	1.19	3.00	3.540	MK 756	1 1/8-7 x 7	237	56.5
		1128-48-48							1 1/8-7						

① Order Separately ② 2500 PSI Max ③ 2000 PSI Max ④ 500 PSI Max ⑤ Not Included in SAE J518 specifications
 ⑥ C'bore depth by pipe size: 1 1/2" to 2 1/2" is .50" (2 1/2" 62 series is .62"); 3" to 5" is .62"