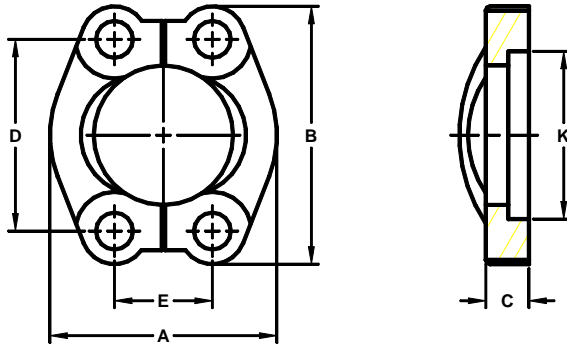


Developers and Manufacturers of Hydraulic Flanges & Components

SPLIT FLANGES

SAE J518 61 SERIES / ISO 6162-1 PATTERN (J518 61 SERIES METRIC)

FLANGE SIZE		PART [®] NUMBER	A	B	C	D	E	K	MOUNTING KIT ^①			WT
									PART NO.	BOLT SIZE	O-RING	
1/2	13	1319-08-08	1.81	2.12	.50	1.500	.688	1.219	MK 701	5/16-18 X 1 1/4	210	.3
		1319-08-08M8							M8 X 25			
3/4	19	1319-12-12	2.05	2.56	.56	1.875	.875	1.531	MK 1743	3/8-16 X 1 1/4	214	.4
		1319-12-12M10							M10 X 30			
1	25	1319-16-16	2.31	2.75	.62	2.062	1.031	1.781	MK 2735	3/8-16 X 1 1/4	219	.5
		1319-16-16M10							M10 X 30			
1 1/4	32	1319-20-20	2.88	3.12	.56	2.312	1.188	2.031	MK 1727	7/16-14 X 1 1/2	222	.6
		1319-20-20M10							M10 X 30			
		1319-20-20M12*							M12 X 35			
1 1/2	38	1319-24-24	3.25	3.69	.62	2.750	1.406	2.406	MK 2736	1/2-13 X 1 1/2	225	.9
		1319-24-24M12							M12 X 35			
		1319-24-24M14*							M14 X 40			
2	51	1319-32-32	3.81	4.00	.62	3.062	1.688	2.844	MK 2737	1/2-13 X 1 1/2	228	1.2
		1319-32-32M12							M12 X 35			
		1319-32-32M14*							M14 X 40			
2 1/2 ^②	64	1319-40-40	4.28	4.50	.75	3.500	2.000	3.344	MK 1728	1/2-13 X 1 3/4	232	1.9
		1319-40-40M12							M12 X 40			
		1319-40-40M14*							M14 X 45			
3 ^③	76	1319-48-48	5.16	5.31	.88	4.188	2.438	4.031	MK 2738	5/8-11 X 1 3/4	237	2.9
		1319-48-48M16							M16 X 50			
3 1/2 ^④	89	1319-56-56	5.50	6.00	.88	4.750	2.750	4.531	MK 1771	5/8-11 X 2	241	2.8
		1319-56-56M16							M16 X 50			
4 ^④	102	1319-64-64	6.00	6.38	1.00	5.125	3.062	5.031	MK 1772	5/8-11 X 2	245	3.7
		1319-64-64M16							M16 X 50			



SAE J518 62 SERIES / ISO 6162-2 PATTERN (J518 62 SERIES METRIC)

FLANGE SIZE		PART [®] NUMBER	A	B	C	D	E	K	MOUNTING KIT ^①			WT
									PART NO.	BOLT SIZE	O-RING	
1/2	13	1320-08-08	1.88	2.22	.62	1.594	.718	1.281	MK 701	5/16-18 X 1 1/4	210	.4
		1320-08-08M8							M8 X 30			
3/4	19	1320-12-12	2.38	2.81	.75	2.000	.937	1.656	MK 1725	3/8-16 X 1 1/2	214	.7
		1320-12-12M10							M10 X 35			
1	25	1320-16-16	2.75	3.19	.94	2.250	1.093	1.906	MK 713	7/16-14 X 1 3/4	219	1.2
		1320-16-16M12							M12 X 45			
1 1/4	32	1320-20-20	3.06	3.75	1.06	2.625	1.250	2.156	MK 2740	1/2-13 X 2	222	1.7
		1320-20-20M12							M12 X 45			
		1320-20-20M14*							M14 X 50			
1 1/2	38	1320-24-24	3.75	4.44	1.19	3.125	1.437	2.531	MK 2741	5/8-11 X 2 1/4	225	2.9
		1320-24-24M16							M16 X 55			
2	51	1320-32-32	4.50	5.25	1.44	3.812	1.750	3.156	MK 2743	3/4-10 X 2 3/4	228	4.4
		1320-32-32M20							M20 X 70			

1. Order Separately. 2. 2500 PSI Max. 3. 2000 PSI Max. 4. 500 PSI Max. 5. Includes Both Halves
* Non Standard Bolt For This Flange Size.