

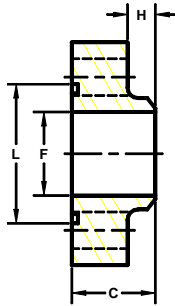
Developers and Manufacturers of Hydraulic Flanges & Components

## SQUARE, BUTT WELD IN-LINE PIPE FLANGES

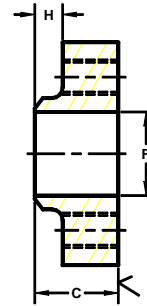
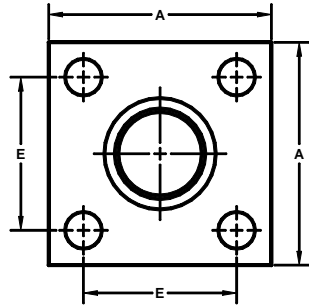
For Schedule 160 Pipe

### 3000 SERIES

FLANGE SIZE	PIPE SIZE	PART NUMBER	A	C	E	F	H	L	MOUNTING KIT <sup>①</sup>			WT
									PART NO.	BOLT SIZE	O-RING	
1/2	1/2	1403-08-08	2.25	1.25	1.438	.47	.38	1.375	MK 528	3/8-16 X 1 3/4	216	
		1404-08-08						---	---	---		
3/4	3/4	1403-12-12	2.25	1.25	1.438	.61	.38	1.375	MK 528	3/8-16 X 1 3/4	216	
		1404-12-12						---	---	---		
1	1	1403-16-16	3.00	1.25	2.000	.81	.38	1.750	MK 529	1/2-13 X 1 3/4	222	
		1404-16-16						---	---	---		
1 1/4	1 1/4	1403-20-20	3.00	1.25	2.000	1.16	.38	1.750	MK 529	1/2-13 X 1 3/4	222	
		1404-20-20						---	---	---		
1 1/2	1 1/2	1403-24-24	4.00	1.50	2.750	1.34	.50	2.500	MK 581	5/8-11 X 2	228	
		1404-24-24						---	---	---		
2	2	1403-32-32	4.00	1.50	2.750	1.69	.50	2.500	MK 581	5/8-11 X 2	228	
		1404-32-32						---	---	---		
2 1/2	2 1/2	1403-40-40	5.50	1.75	3.750	2.12	.50	3.500	MK 1519	7/8-9 X 2 1/2	236	
		1404-40-40						---	---	---		
3	3	1403-48-48	5.50	1.75	3.750	2.62	.50	3.500	MK 1519	7/8-9 X 2 1/2	236	
		1404-48-48						---	---	---		
3 1/2	3 1/2	1403-56-56	6.00	1.75	4.250	3.00	.50	4.000	MK 1577	7/8-9 X 2 1/2	240	
		1404-56-56						---	---	---		
4	4	1403-64-64	7.00	2.00	5.000	3.44	.50	4.625	MK 1578	1-8 X 3	347	
		1404-64-64						---	---	---		
5	5	1403-80-80	8.00	2.50	6.000	4.31	.50	5.625	MK 1579	1-8 X 3 1/2	355	
		1404-80-80						---	---	---		
6	6	1403-96-96	10.00	2.50	7.000	5.19	.50	6.625	MK 5533	1 1/4-7 X 4	362	
		1404-96-96						---	---	---		



O-RING  
1403  
1405



FLAT-FACED  
1404  
1406

### 6000 SERIES

FLANGE SIZE	PIPE SIZE	PART NUMBER	A	C	E	F	H	L	MOUNTING KIT <sup>①</sup>			WT
									PART NO.	BOLT SIZE	O-RING	
1	1	1405-16-16	3.00	1.50	2.000	.81	.50	1.562	MK 2503	1/2-13 X 2	219	
		1406-16-16						---	---	---		
1 1/4	1 1/4	1405-20-20	4.00	1.75	2.750	1.16	.50	1.750	MK 2504	5/8-11 X 2 1/2	222	
		1406-20-20						---	---	---		
1 1/2	1 1/2	1405-24-24	4.00	2.00	2.750	1.34	.50	2.125	MK 2505	5/8-11 X 2 3/4	225	
		1406-24-24						---	---	---		
2	2	1405-32-32	5.00	2.25	3.500	1.69	.50	2.500	MK 2506	3/4-10 X 3 1/2	228	
		1406-32-32						---	---	---		
2 1/2	2 1/2	1405-40-40	5.50	2.25	3.750	2.12	.50	3.000	MK 2507	7/8-9 X 3 1/2	232	
		1406-40-40						---	---	---		
3	3	1405-48-48	7.00	2.50	4.750	2.62	.50	3.500	MK 2508	1-8 X 4	236	
		1406-48-48						---	---	---		
3 1/2	3 1/2	1405-56-56	8.00	3.50	5.500	3.00	1.00	4.000	MK 2509	1 1/4-7 X 5	342	
		1406-56-56						---	---	---		
4	4	1405-64-64	8.50	3.50	6.000	3.44	1.00	4.500	MK 2510	1 1/4-7 X 5	346	
		1406-64-64						---	---	---		
5	5	1405-80-80	10.00	4.00	7.250	4.31	1.00	5.375	MK 2511	1 1/2-6 X 6	353	
		1406-80-80						---	---	---		

1. Order Separately.