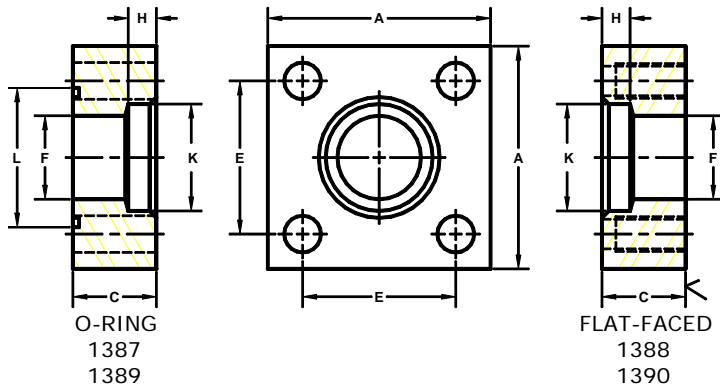


Developers and Manufacturers of Hydraulic Flanges & Components

SQUARE, SOCKET WELD IN-LINE PIPE FLANGES

3000 SERIES													
FLANGE SIZE	PIPE SIZE	PART NUMBER	A	C	E	F	H	K	L	MOUNTING KIT®			WT
										PART NO.	BOLT SIZE	O-RING	
1/2	1/2	1387-08-08	2.25	1.00	1.438	.50	.50	.860	1.375	MK 528	3/8-16 X 1 3/4	216	1.2
		1388-08-08	---	---	---	---	---	---	---	---	---	---	
3/4	3/4	1387-12-12	2.25	1.00	1.438	.75	.50	1.070	1.375	MK 528	3/8-16 X 1 3/4	216	1.1
		1388-12-12	---	---	---	---	---	---	---	---	---	---	
1	1	1387-16-16	3.00	1.00	2.000	1.00	.50	1.335	1.750	MK 529	1/2-13 X 1 3/4	222	2.0
		1388-16-16	---	---	---	---	---	---	---	---	---	---	
1 1/4	1 1/4	1387-20-20	3.00	1.00	2.000	1.25	.50	1.680	1.750	MK 529	1/2-13 X 1 3/4	222	1.8
		1388-20-20	---	---	---	---	---	---	---	---	---	---	
1 1/2	1 1/2	1387-24-24	4.00	1.25	2.750	1.50	.62	1.920	2.500	MK 530	5/8-11 X 2 1/4	228	4.4
		1388-24-24	---	---	---	---	---	---	---	---	---	---	
2	2	1387-32-32	4.00	1.25	2.750	1.94	.62	2.411	2.500	MK 530	5/8-11 X 2 1/4	228	3.8
		1388-32-32	---	---	---	---	---	---	---	---	---	---	
2 1/2	2 1/2	1387-40-40	5.50	1.50	3.750	2.44	.75	2.911	3.500	MK 531	7/8-9 X 2 3/4	236	9.5
		1388-40-40	---	---	---	---	---	---	---	---	---	---	
3	3	1387-48-48	5.50	1.50	3.750	2.88	.75	3.540	3.500	MK 531	7/8-9 X 2 3/4	236	8.4
		1388-48-48	---	---	---	---	---	---	---	---	---	---	
3 1/2	3 1/2	1387-56-56	6.00	1.75	4.250	3.38	.75	4.045	4.000	MK 589	7/8-9 X 3	240	11.5
		1388-56-56	---	---	---	---	---	---	---	---	---	---	
4	4	1387-64-64	7.00	2.00	5.000	3.88	.75	4.550	4.625	MK 572	1-8 X 3 1/2	347	18.3
		1388-64-64	---	---	---	---	---	---	---	---	---	---	
5	5	1387-80-80	8.00	2.50	6.000	4.81	1.00	5.635	5.625	MK 590	1-8 X 4	355	28.0
		1388-80-80	---	---	---	---	---	---	---	---	---	---	
6	6	1387-96-96	10.00	2.50	7.000	5.75	1.00	6.697	6.625	MK 573	1 1/4-7 X 4 1/2	362	45.8
		1388-96-96	---	---	---	---	---	---	---	---	---	---	



ALSO AVAILABLE
IN **BW40, BW80**
BW160, BWXXS
NPTF &
SAE ST THREAD

6000 SERIES													
FLANGE SIZE	PIPE SIZE	PART NUMBER	A	C	E	F	H	K	L	MOUNTING KIT®			WT
										PART NO.	BOLT SIZE	O-RING	
1	1	1389-16-16	3.00	1.00	2.000	.81	.50	1.335	1.562	MK 2503	1/2-13 X 2	219	2.0
		1390-16-16	---	---	---	---	---	---	---	---	---	---	
1 1/4	1 1/4	1389-20-20	4.00	1.25	2.750	1.16	.50	1.680	1.750	MK 2504	5/8-11 X 2 1/2	222	4.7
		1390-20-20	---	---	---	---	---	---	---	---	---	---	
1 1/2	1 1/2	1389-24-24	4.00	1.50	2.750	1.34	.62	1.920	2.125	MK 2505	5/8-11 X 2 3/4	225	5.4
		1390-24-24	---	---	---	---	---	---	---	---	---	---	
2	2	1389-32-32	5.00	1.75	3.500	1.69	.62	2.411	2.500	MK 2506	3/4-10 X 3 1/2	228	10.2
		1390-32-32	---	---	---	---	---	---	---	---	---	---	
2 1/2	2 1/2	1389-40-40	5.50	1.75	3.750	2.12	.75	2.911	3.000	MK 2507	7/8-9 X 3 1/2	232	11.6
		1390-40-40	---	---	---	---	---	---	---	---	---	---	
3	3	1389-48-48	7.00	2.00	4.750	2.62	.75	3.540	3.500	MK 2508	1-8 X 4	236	22.0
		1390-48-48	---	---	---	---	---	---	---	---	---	---	
3 1/2	3 1/2	1389-56-56	8.00	2.50	5.500	3.00	1.00	4.045	4.000	MK 2509	1 1/4-7 X 5	342	35.5
		1390-56-56	---	---	---	---	---	---	---	---	---	---	
4	4	1389-64-64	8.50	2.50	6.000	3.44	1.00	4.550	4.500	MK 2510	1 1/4-7 X 5	346	38.6
		1390-64-64	---	---	---	---	---	---	---	---	---	---	
5	5	1389-80-80	10.00	3.00	7.250	4.31	1.12	5.635	5.375	MK 2511	1 1/2-6 X 6	353	63.3
		1390-80-80	---	---	---	---	---	---	---	---	---	---	

1. Order Separately.