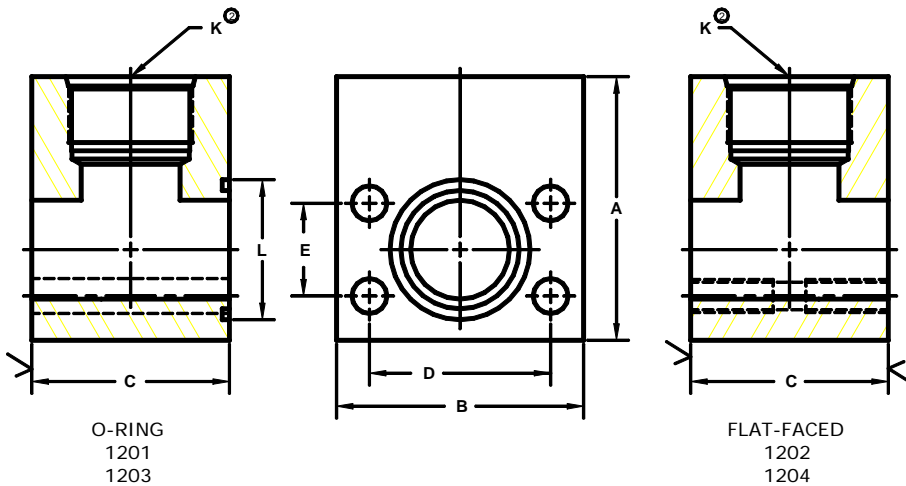


Developers and Manufacturers of Hydraulic Flanges & Components

SAE STRAIGHT THREADED RUN TEE FLANGES

SAE BOLT PATTERN			61 SERIES								
FLANGE SIZE	PORT SIZE	PART NUMBER	A	B	C	D	E	K	L	O-RING ^①	WT
1/2	-8	1201-08-08	2.00	2.12	1.44	1.500	.688	3/4-16	1.000	210	1.5
		1202-08-08	-----	-----	-----	-----	-----	-----	-----	-----	
3/4	-10	1201-12-10	2.50	2.62	1.70	1.875	.875	7/8-14	1.250	214	2.7
		1202-12-10	-----	-----	-----	-----	-----	-----	-----	-----	
3/4	-12	1201-12-12	2.50	2.62	1.70	1.875	.875	1 1/16-12	1.250	214	2.5
		1202-12-12	-----	-----	-----	-----	-----	-----	-----	-----	
1	-14	1201-16-14	3.00	2.82	1.94	2.062	1.031	1 3/16-12	1.562	219	3.7
		1202-16-14	-----	-----	-----	-----	-----	-----	-----	-----	
1	-16	1201-16-16	3.00	2.82	1.94	2.062	1.031	1 5/16-12	1.562	219	3.5
		1202-16-16	-----	-----	-----	-----	-----	-----	-----	-----	
1 1/4	-20	1201-20-20	3.50	3.19	2.40	2.312	1.188	1 5/8-12	1.750	222	5.7
		1202-20-20	-----	-----	-----	-----	-----	-----	-----	-----	
1 1/2	-24	1201-24-24	4.00	3.75	2.90	2.750	1.406	1 7/8-12	2.125	225	10.0
		1202-24-24	-----	-----	-----	-----	-----	-----	-----	-----	
2	-32	1201-32-32	4.25	4.00	3.94	3.062	1.688	2 1/2-12	2.500	228	14.0
		1202-32-32	-----	-----	-----	-----	-----	-----	-----	-----	



SAE BOLT PATTERN			62 SERIES								
FLANGE SIZE	PORT SIZE	PART NUMBER	A	B	C	D	E	K	L	O-RING ^①	WT
1/2	-8	1203-08-08	2.00	2.22	1.46	1.594	.718	3/4-16	1.000	210	1.7
		1204-08-08	-----	-----	-----	-----	-----	-----	-----	-----	
3/4	-10	1203-12-10	2.50	2.81	1.70	2.000	.937	7/8-14	1.250	214	3.0
		1204-12-10	-----	-----	-----	-----	-----	-----	-----	-----	
3/4	-12	1203-12-12	2.50	2.81	1.70	2.000	.937	1 1/16-12	1.250	214	2.7
		1204-12-12	-----	-----	-----	-----	-----	-----	-----	-----	
1	-14	1203-16-14	3.00	3.19	1.96	2.250	1.093	1 3/16-12	1.562	219	4.5
		1204-16-14	-----	-----	-----	-----	-----	-----	-----	-----	
1	-16	1203-16-16	3.00	3.19	1.96	2.250	1.093	1 5/16-12	1.562	219	4.5
		1204-16-16	-----	-----	-----	-----	-----	-----	-----	-----	
1 1/4	-20	1203-20-20	4.00	3.75	2.44	2.625	1.250	1 5/8-12	1.750	222	7.8
		1204-20-20	-----	-----	-----	-----	-----	-----	-----	-----	
1 1/2	-24	1203-24-24	4.00	4.50	2.96	3.125	1.437	1 7/8-12	2.125	225	12.0
		1204-24-24	-----	-----	-----	-----	-----	-----	-----	-----	
2	-32	1203-32-32	5.00	5.25	3.94	3.812	1.750	2 1/2-12	2.500	228	20.2
		1204-32-32	-----	-----	-----	-----	-----	-----	-----	-----	

1. Included 2. SAE has a lower rating on the St. Thd. fitting than the flange pad. Check the fitting manufacturer for details.