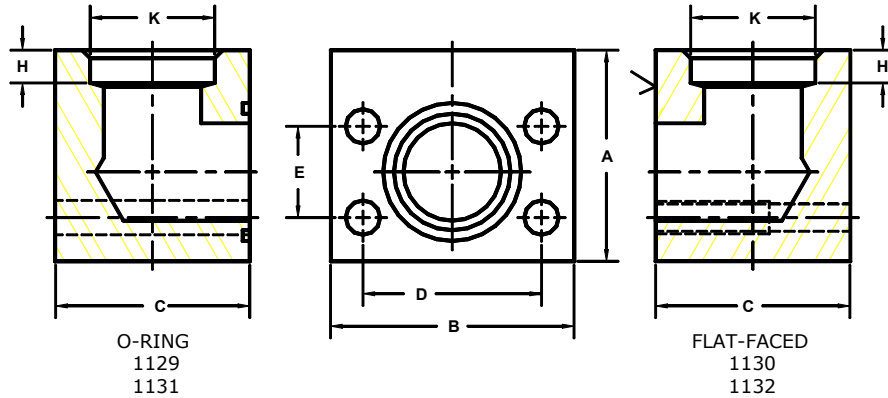


Developers and Manufacturers of
Hydraulic Flanges & Components

SOCKET WELD TUBE ELBOW FLANGES

SAE BOLT PATTERN										61 SERIES			WT
FLANGE SIZE	TUBE SIZE	PART NUMBER	A	B	C	D	E	H	K	MOUNTING KIT ^①			
										PART NO.	BOLT SIZE	O-RING	
1/2	3/4	1129-08-12	1.75	2.12	1.44	1.500	.688	.38	.760	MK 541	5/16-18 X 2	210	
		1130-08-12								-----	---		
3/4	7/8	1129-12-14	2.00	2.62	1.70	1.875	.875	.50	.885	MK 542	3/8-16 X 2 1/2	214	
		1130-12-14								-----	---		
3/4	1	1129-12-16	2.00	2.62	1.70	1.875	.875	.50	1.010	MK 542	3/8-16 X 2 1/2	214	
		1130-12-16								-----	---		
1	1 1/4	1129-16-20	2.25	2.82	1.94	2.062	1.031	.50	1.260	MK 543	3/8-16 X 2 3/4	219	
		1130-16-20								-----	---		
1 1/4	1 1/2	1129-20-24	2.75	3.19	2.40	2.312	1.188	.50	1.510	MK 578	7/16-14 X 3 1/4	222	
		1130-20-24								-----	---		
1 1/2	1 3/4	1129-24-28	3.00	3.75	2.90	2.750	1.406	.50	1.760	MK 545	1/2-13 X 4	225	
		1130-24-28								-----	---		
1 1/2	2	1129-24-32	3.00	3.75	2.90	2.750	1.406	.50	2.010	MK 545	1/2-13 X 4	225	
		1130-24-32								-----	---		
2	2 1/4	1129-32-36	3.50	4.00	3.40	3.062	1.688	.50	2.260	MK 546	1/2-13 X 4 1/2	228	
		1130-32-36								-----	---		
2 1/2 ^②	2 3/4	1129-40-44	4.00	4.50	3.94	3.500	2.000	.50	2.760	MK 547	1/2-13 X 5	232	
		1130-40-44								-----	---		



SAE BOLT PATTERN										62 SERIES			WT
FLANGE SIZE	TUBE SIZE	PART NUMBER	A	B	C	D	E	H	K	MOUNTING KIT ^①			
										PART NO.	BOLT SIZE	O-RING	
1/2	3/4	1131-08-12	2.00	2.22	1.46	1.594	.718	.38	.760	MK 541	5/16-18 X 2	210	
		1132-08-12								-----	---		
3/4	7/8	1131-12-14	2.25	2.81	1.70	2.000	.937	.50	.885	MK 542	3/8-16 X 2 1/2	214	
		1132-12-14								-----	---		
3/4	1	1131-12-16	2.25	2.81	1.70	2.000	.937	.50	1.010	MK 542	3/8-16 X 2 1/2	214	
		1132-12-16								-----	---		
1	1 1/4	1131-16-20	2.50	3.19	2.21	2.250	1.093	.50	1.260	MK 2533	7/16-14 X 3	219	
		1132-16-20								-----	---		
1 1/4	1 1/2	1131-20-24	3.00	3.75	2.44	2.625	1.250	.50	1.510	MK 552	1/2-13 X 3 1/4	222	
		1132-20-24								-----	---		
1 1/2	1 3/4	1131-24-28	3.50	4.50	2.96	3.125	1.437	.50	1.760	MK 553	5/8-11 X 4	225	
		1132-24-28								-----	---		
1 1/2	2	1131-24-32	3.50	4.50	2.96	3.125	1.437	.50	2.010	MK 553	5/8-11 X 4	225	
		1132-24-32								-----	---		
2	2 1/4	1131-32-36	4.00	5.25	3.46	3.812	1.750	.50	2.260	MK 554	3/4-10 X 4 1/2	228	
		1132-32-36								-----	---		

1. Order Separately 2. 2500 PSI Max

©Copyright April 2008