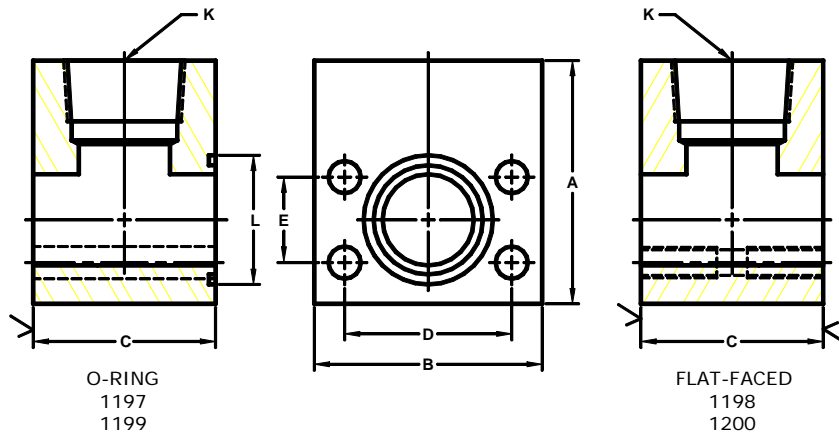


Developers and Manufacturers of Hydraulic Flanges & Components

NPTF THREADED RUN TEE FLANGES

SAE BOLT PATTERN			61 SERIES								
FLANGE SIZE	PIPE SIZE	PART NUMBER	A	B	C	D	E	K	L	O-RING ^①	WT
1/2	1/2	1197-08-08	2.00	2.12	1.44	1.500	.688	1/2	1.000	210	1.3
		1198-08-08							-----	-----	
3/4	3/4	1197-12-12	2.50	2.62	1.70	1.875	.875	3/4	1.250	214	2.5
		1198-12-12							-----	-----	
1	1	1197-16-16	3.00	2.82	1.94	2.062	1.031	1	1.562	219	3.5
		1198-16-16							-----	-----	
1 1/4	1 1/4	1197-20-20	3.50	3.19	2.40	2.312	1.188	1 1/4	1.750	222	5.3
		1198-20-20							-----	-----	
1 1/2	1 1/2	1197-24-24	4.00	3.75	2.90	2.750	1.406	1 1/2	2.125	225	9.5
		1198-24-24							-----	-----	
2	2	1197-32-32	4.50	4.00	2.96	3.062	1.688	2	2.500	228	10.0
		1198-32-32							-----	-----	
2 1/2 ^②	2 1/2	1197-40-40	5.00	4.50	3.96	3.500	2.000	2 1/2	3.000	232	18.0
		1198-40-40							-----	-----	
3 ^③	3	1197-48-48	6.00	5.31	4.46	4.188	2.438	3	3.625	237	27.0
		1198-48-48							-----	-----	



SAE BOLT PATTERN			62 SERIES								
FLANGE SIZE	PIPE SIZE	PART NUMBER	A	B	C	D	E	K	L	O-RING ^①	WT
1/2	1/2	1199-08-08	2.00	2.22	1.46	1.594	.718	1/2	1.000	210	1.5
		1200-08-08							-----	-----	
3/4	3/4	1199-12-12	2.50	2.81	1.70	2.000	.937	3/4	1.250	214	2.7
		1200-12-12							-----	-----	
1	1	1199-16-16	3.00	3.19	1.96	2.250	1.093	1	1.562	219	4.2
		1200-16-16							-----	-----	
1 1/4	1 1/4	1199-20-20	4.00	3.75	2.44	2.625	1.250	1 1/4	1.750	222	6.5
		1200-20-20							-----	-----	
1 1/2	1 1/2	1199-24-24	4.00	4.50	2.96	3.125	1.437	1 1/2	2.125	225	11.7
		1200-24-24							-----	-----	
2	2	1199-32-32	5.00	5.25	3.46	3.812	1.750	2	2.500	228	20.0
		1200-32-32							-----	-----	
2 1/2 ^④	2 1/2	1199-40-40	6.00	6.88	4.00	4.875	2.312	2 1/2	3.000	232	
		1200-40-40							-----	-----	
3 ^④	3	1199-48-48	7.00	8.50	5.00	6.000	2.812	3	3.625	237	
		1200-48-48							-----	-----	

1. Included 2. 2500 PSI Max 3. 2000 PSI Max 4. Not included in SAE J518 specifications

©Copyright March 2006