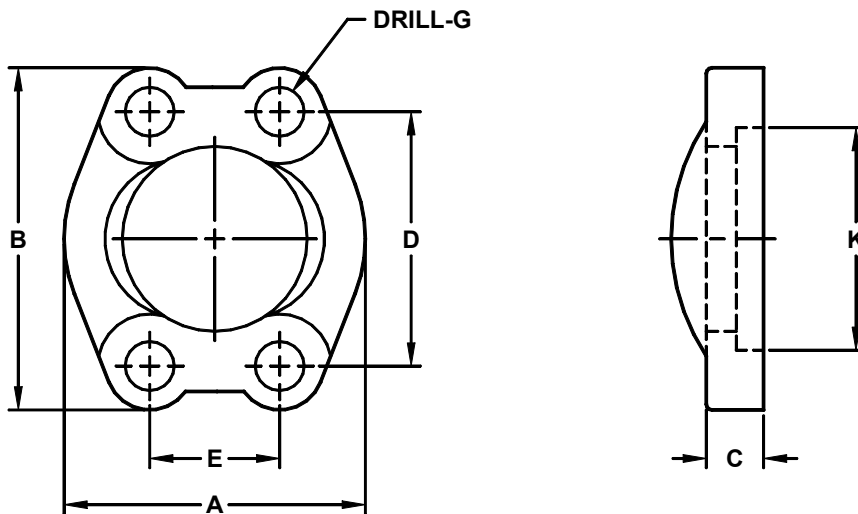


**Developers and Manufacturers of
Hydraulic Flanges & Components**
FLANGED CLAMPS

SAE BOLT PATTERN									61 SERIES		
FLANGE SIZE	PART NUMBER	A	B	C	D	E	G	K	MOUNTING KIT ^①		
									PART NO.	BOLT SIZE	O-RING
1/2	1221-08-08	1.81	2.12	.50	1.500	.688	.34	1.219	MK 701	5/16-18 X 1 1/4	210
3/4	1221-12-12	2.05	2.56	.56	1.875	.875	.41	1.531	MK 1743	3/8-16 X 1 1/4	214
1	1221-16-16	2.31	2.75	.62	2.062	1.031	.41	1.781	MK 2735	3/8-16 X 1 1/4	219
1 1/4	1221-20-20	2.88	3.12	.56	2.312	1.188	.47	2.031	MK 1727	7/16-14 X 1 1/2	222
1 1/2	1221-24-24	3.25	3.69	.62	2.750	1.406	.53	2.406	MK 2736	1/2-13 X 1 1/2	225
2	1221-32-32	3.81	4.00	.62	3.062	1.688	.53	2.844	MK 2737	1/2-13 X 1 1/2	228
2 1/2 ^②	1221-40-40	4.28	4.50	.75	3.500	2.000	.53	3.344	MK 1728	1/2-13 X 1 3/4	232
3 ^③	1221-48-48	5.16	5.31	.88	4.188	2.438	.66	4.031	MK 1711	5/8-11 X 2	237
3 1/2 ^④	1221-56-56	5.50	6.00	.88	4.750	2.750	.66	4.531	MK 1771	5/8-11 X 2	241
4 ^④	1221-64-64	6.00	6.38	1.00	5.125	3.062	.66	5.031	MK 1772	5/8-11 X 2	245



Model 1221 / 1223

SAE BOLT PATTERN									62 SERIES		
FLANGE SIZE	PART NUMBER	A	B	C	D	E	G	K	MOUNTING KIT ^①		
									PART NO.	BOLT SIZE	O-RING
1/2	1223-08-08	1.88	2.22	.62	1.594	.718	.34	1.281	MK 701	5/16-18 X 1 1/4	210
3/4	1223-12-12	2.38	2.81	.75	2.000	.937	.41	1.656	MK 1725	3/8-16 X 1 1/2	214
1	1223-16-16	2.75	3.19	.94	2.250	1.093	.47	1.906	MK 713	7/16-14 X 1 3/4	219
1 1/4	1223-20-20	3.06	3.75	1.06	2.625	1.250	.53	2.156	MK 2740	1/2-13 X 2	222
1 1/2	1223-24-24	3.75	4.44	1.19	3.125	1.437	.66	2.531	MK 2741	5/8-11 X 2 1/4	225
2	1223-32-32	4.50	5.25	1.44	3.812	1.750	.78	3.156	MK 2743	3/4-10 X 2 3/4	228

① Order Separately ② 2500 PSI Max ③ 2000 PSI Max ④ 500 PSI

©Copyright Aug. 2006