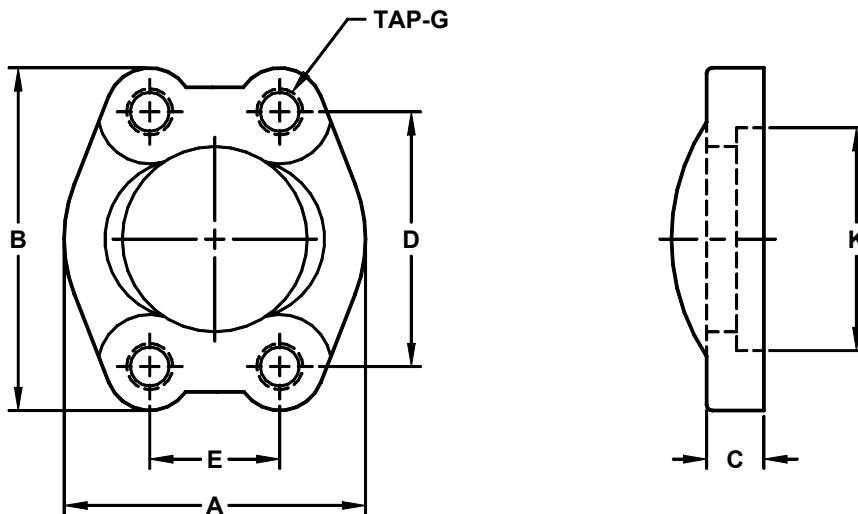


**Developers and Manufacturers of  
Hydraulic Flanges & Components**
**COMPANION FLANGED CLAMPS**

SAE BOLT PATTERN					61 SERIES				
FLANGE SIZE	PART NUMBER	A	B	C	D	E	G	K	
<b>1/2</b>	1222-08-08	1.81	2.12	.50	1.500	.688	5/16 - 18	1.219	
<b>3/4</b>	1222-12-12	2.05	2.56	.56	1.875	.875	3/8 - 16	1.531	
<b>1</b>	1222-16-16	2.31	2.75	.62	2.062	1.031	3/8 - 16	1.781	
<b>1 1/4</b>	1222-20-20	2.88	3.12	.56	2.312	1.188	7/16 - 14	2.031	
<b>1 1/2</b>	1222-24-24	3.25	3.69	.62	2.750	1.406	1/2 - 13	2.406	
<b>2</b>	1222-32-32	3.81	4.00	.62	3.062	1.688	1/2 - 13	2.844	
<b>2 1/2</b> <sup>①</sup>	1222-40-40	4.28	4.50	.75	3.500	2.000	1/2 - 13	3.344	
<b>3</b> <sup>②</sup>	1222-48-48	5.16	5.31	.88	4.188	2.438	5/8 - 11	4.031	
<b>3 1/2</b> <sup>③</sup>	1222-56-56	5.50	6.00	.88	4.750	2.750	5/8 - 11	4.531	
<b>4</b> <sup>③</sup>	1222-64-64	6.00	6.38	1.00	5.125	3.062	5/8 - 11	5.031	



Model 1222 / 1224

SAE BOLT PATTERN					62 SERIES				
FLANGE SIZE	PART NUMBER	A	B	C	D	E	G	K	
<b>1/2</b>	1224-08-08	1.88	2.22	.62	1.594	.718	5/16 - 18	1.281	
<b>3/4</b>	1224-12-12	2.38	2.81	.75	2.000	.937	3/8 - 16	1.656	
<b>1</b>	1224-16-16	2.75	3.19	.94	2.250	1.093	7/16 - 14	1.906	
<b>1 1/4</b>	1224-20-20	3.06	3.75	1.06	2.625	1.250	1/2 - 13	2.156	
<b>1 1/2</b>	1224-24-24	3.75	4.44	1.19	3.125	1.437	5/8 - 11	2.531	
<b>2</b>	1224-32-32	4.50	5.25	1.44	3.812	1.750	3/4 - 10	3.156	

① 2500 PSI Max    ② 2000 PSI Max    ③ 500 PSI Max

©Copyright Aug. 2006