



How to use this *Quick Reference Guide*

Purpose

It is impractical to catalog every flange that MAIN Manufacturing Products has made over the years, as well as the thousands of special flanges on our shelves. Because special hydraulic flanges as well as standard are the forte of our company and often our customers cannot take the time to draft their requirements, this Quick Reference brochure has been created to assist in determining the best possible flange configuration.

Use

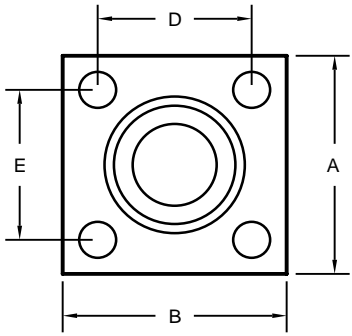
Scan the various frames and after deciding which is closest to your requirement, decide the parameters and call our toll-free number **800-521-7918** (in Michigan, please call 810-953-1380). If you don't know exactly what is required or available, call and our engineers will assist you.

By referring to the frame number and discussing the problem, our engineers will be able to develop the exact flange to fit your requirements. **On this version many of the pictures have links to an index or directly to a catalog page or pages. Simply click the mouse on the link and you will go to the index or catalog pages. PLEASE NOTE: Catalog pages are constantly being produced. If the page is not here please call.**

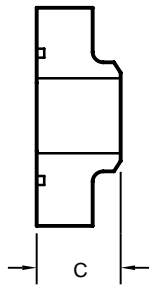
Materials

Flanges can be quoted in carbon steel, stainless steel, monel, aluminum or any other commercially available material.

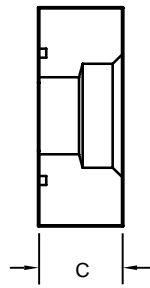
SAE & SQUARE IN-LINE FLANGES



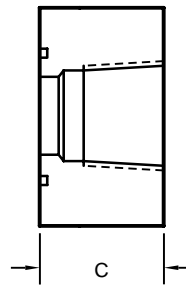
AVAILABLE IN BOTH
O-RING & FLAT FACED



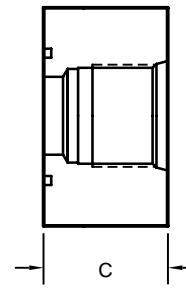
BUTT WELD
65-1A



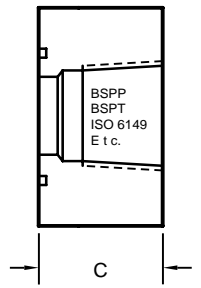
SOCKET WELD
65-1B



N P T F
65-1C

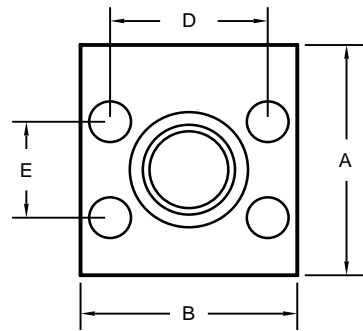


SAE O-RING BOSS
65-1D

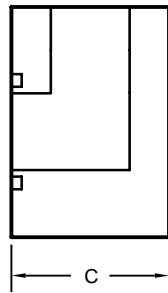


OTHER
65-1E

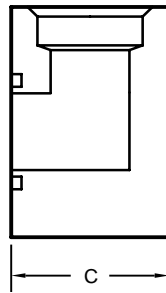
SAE & SQUARE ELBOW FLANGES



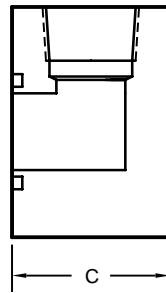
AVAILABLE IN BOTH
O-RING & FLAT FACED



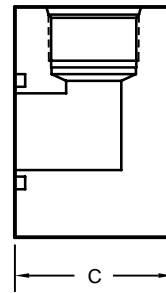
FLANGED
65-2A



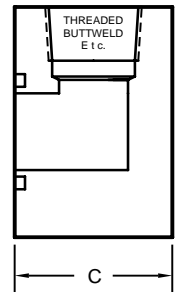
SOCKET WELD
65-2B



N P T F
65-2C

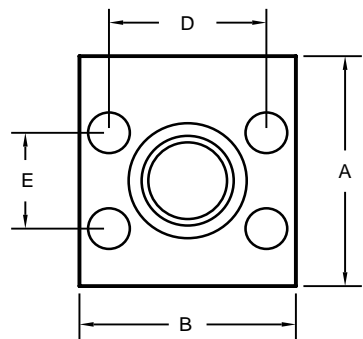


SAE O-RING BOSS
65-2D

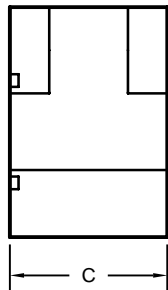


OTHER
65-2E

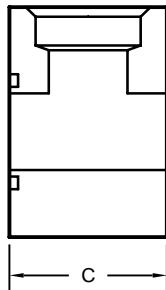
SAE & SQUARE RUN TEE FLANGES



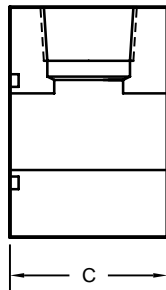
AVAILABLE IN BOTH
O-RING & FLAT FACED



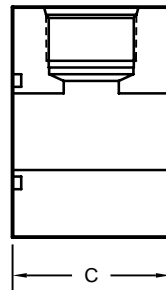
FLANGED
65-3A



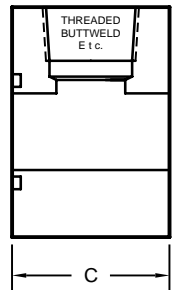
SOCKET WELD
65-3B



N P T F
65-3C

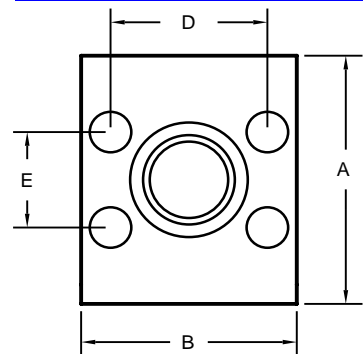


SAE O-RING BOSS
65-3D

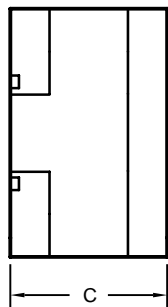


OTHER
65-3E

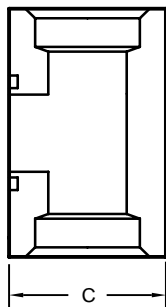
SAE & SQUARE BRANCH TEE FLANGES



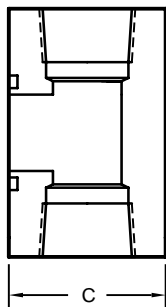
AVAILABLE IN BOTH
O-RING & FLAT FACED



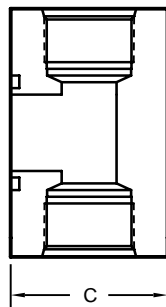
FLANGED
65-4A



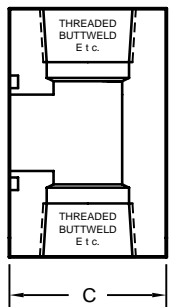
SOCKET WELD
65-4B



N P T F
65-4C

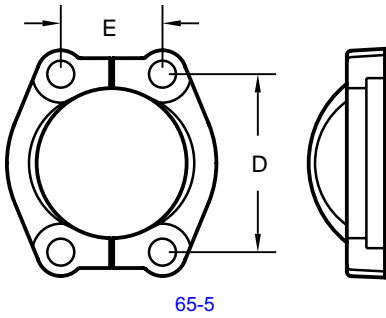


SAE O-RING BOSS
65-4D

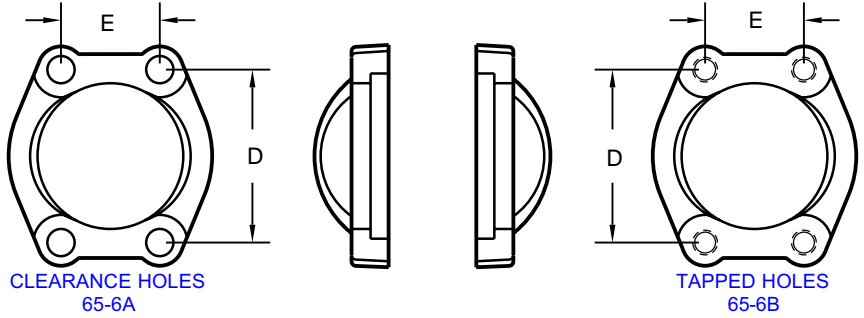


OTHER
65-4E

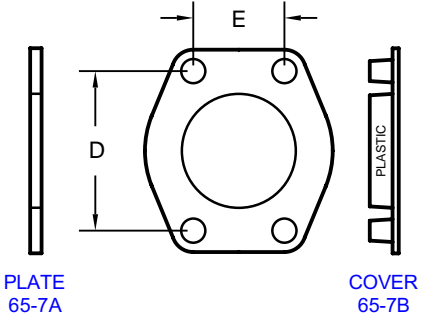
SPLIT FLANGES



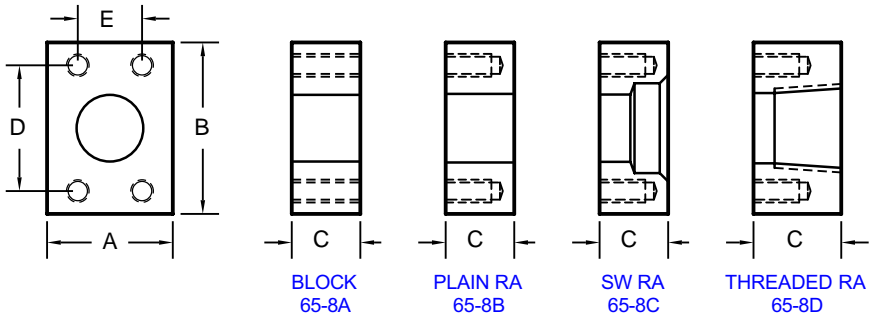
FLANGED CLAMPS



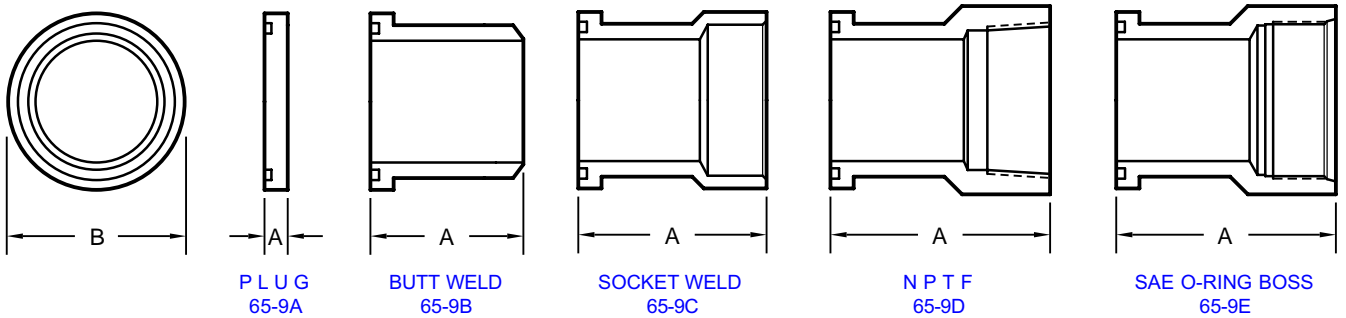
CONNECTOR PLATES & COVERS



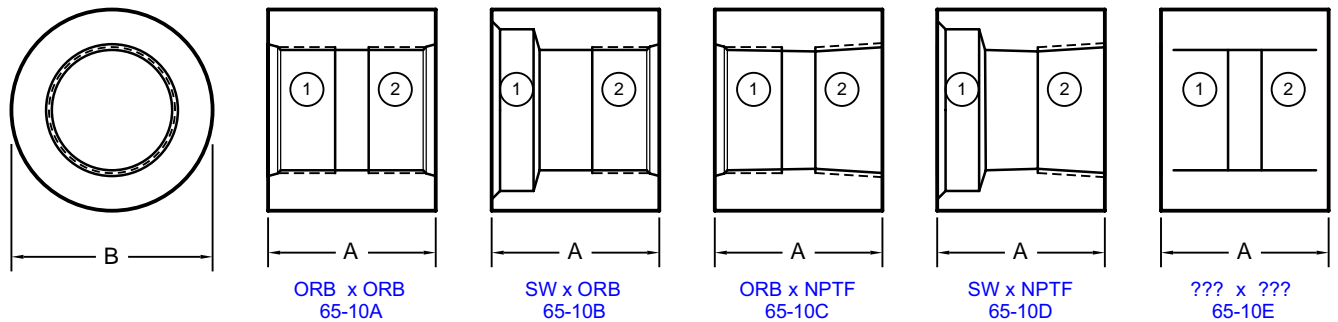
CONNECTOR BLOCKS & RESERVOIR ADAPTERS



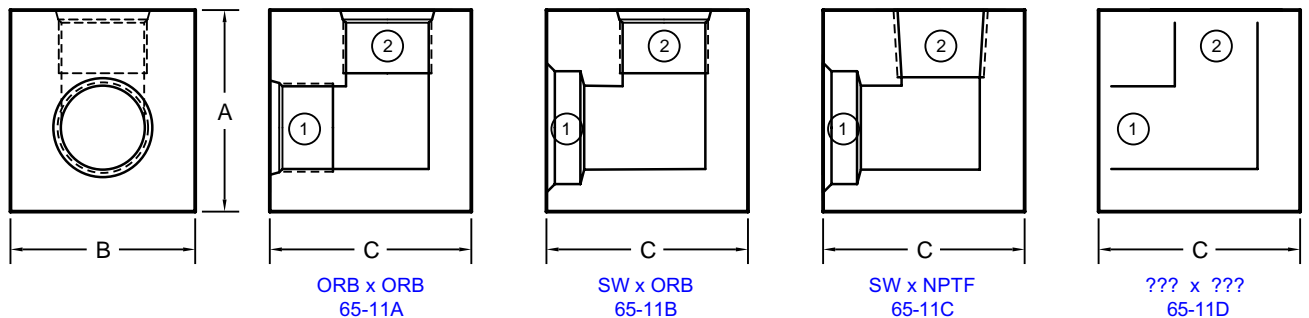
FLANGED PLUGS & HEADS



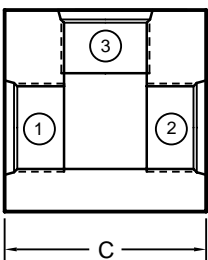
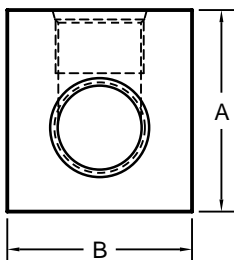
COUPLINGS



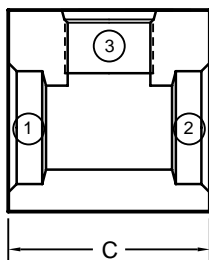
ELBOWS



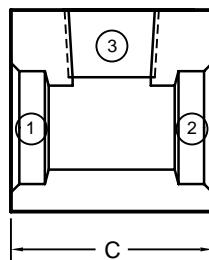
TEES



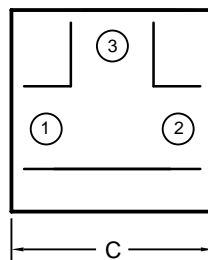
ORB x ORB x ORB
65-12A



SW x SW x ORB
65-12B

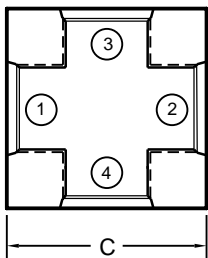
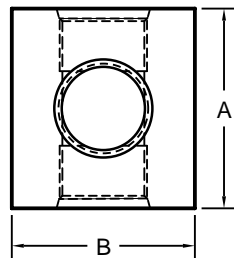


SW x SW x NPTF
65-12C

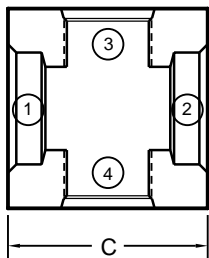


??? x ??? x ???
65-12D

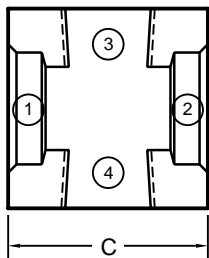
CROSSES



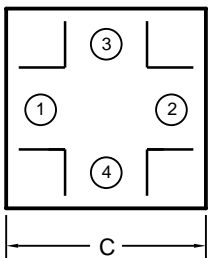
ORB x ORB x ORB x ORB
65-13A



SW x SW x ORB x ORB
65-13B

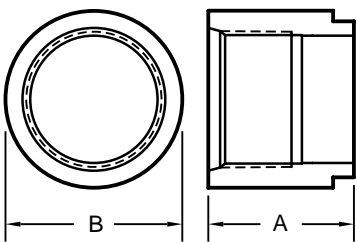


SW x SW x NPTF x NPTF
65-13C



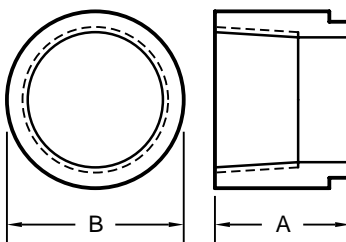
??? x ??? x ??? x ???
65-13D

SAE O-RING BOSS TANK PORTS



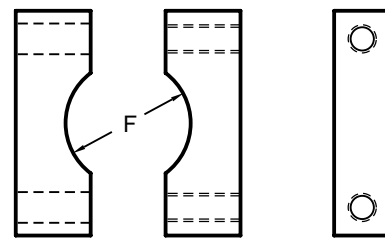
65-14

NPTF TANK PORTS



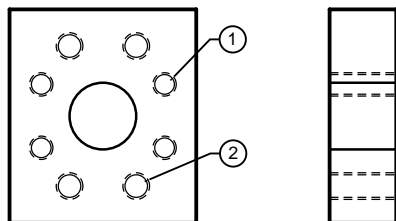
65-15

PIPE & TUBE CLAMPS



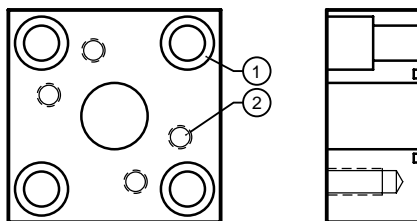
65-16

FLANGE ADAPTERS



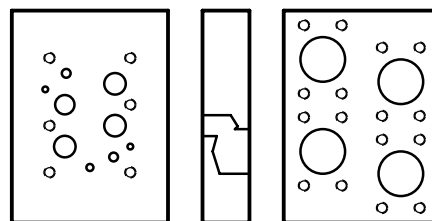
65-17

FLANGE ADAPTERS



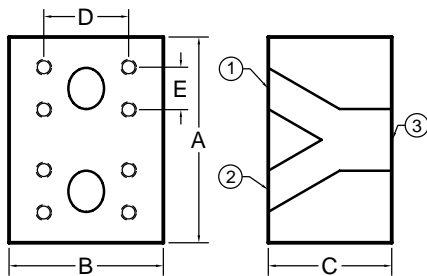
65-18

FLANGED SUBPLATES



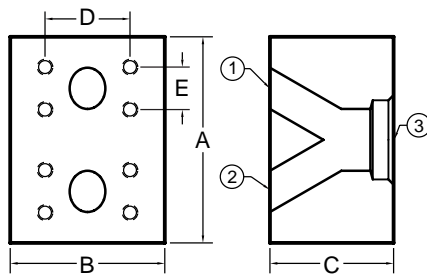
65-19

WYE FLANGES



65-20

WYE FLANGES



65-21